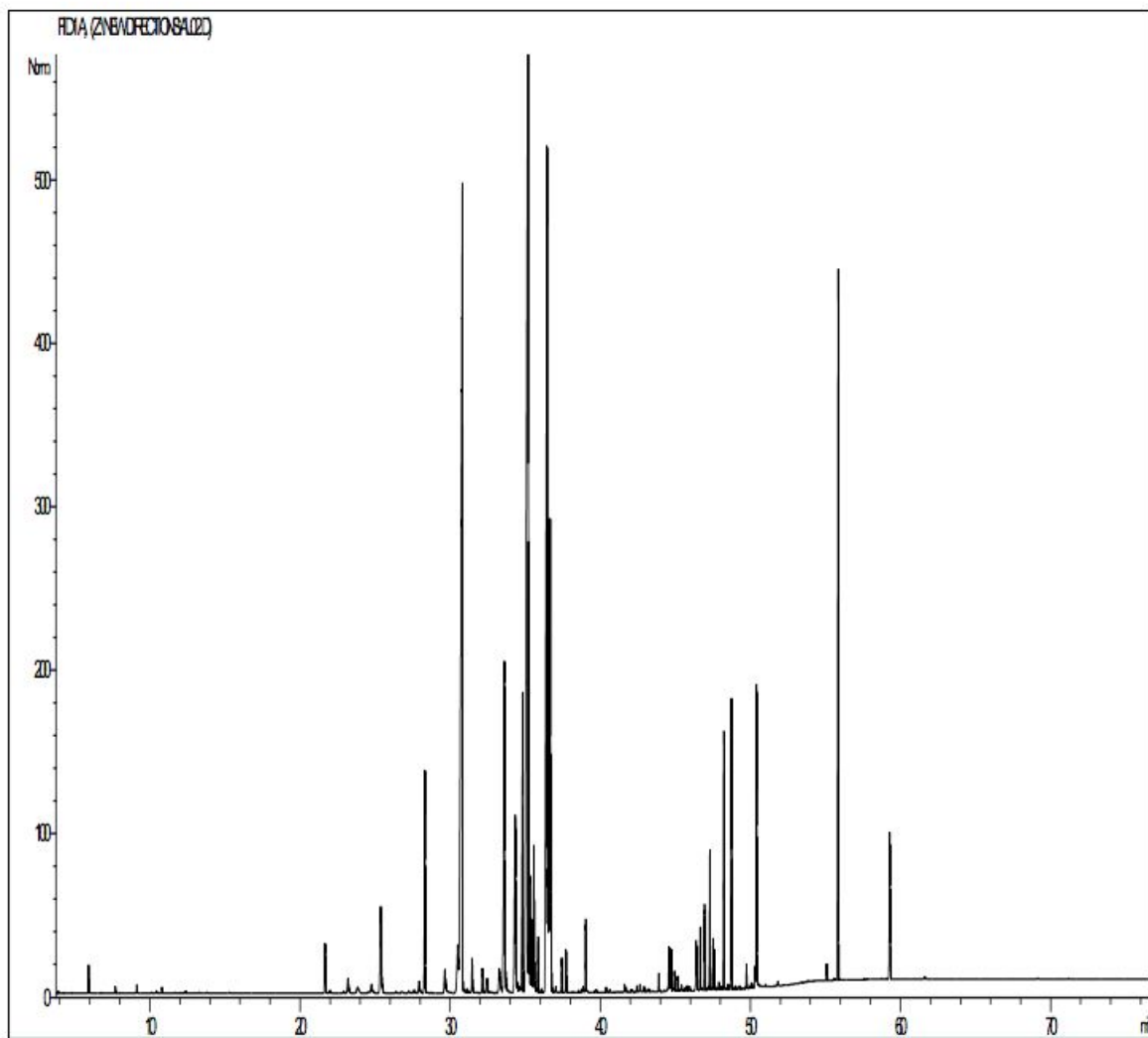


GCMS ANALYSIS

PRODUCT NAME: YLANG YLANG ESSENTIAL OIL (#3) - 11162
DATE: March 25, 2020



GCMS ANALYSIS (cont'd.)

PRODUCT NAME: YLANG YLANG ESSENTIAL OIL (#3) - 11162

Peak	RT (min)	Compound	%
1	5,92	alpha-PINENE	0,13
2	7,70	beta-PINENE	0,04
3	9,14	beta-MYRCENE	0,05
4	10,44	LIMONENE	0,02
5	10,81	1,8-CINEOLE	0,04
6	11,70	cis-beta-OCIMENE	0,01
7	12,38	PRENYL ACETATE	0,01
8	12,39	trans-beta-OCIMENE	0,02
9	13,27	HEXYL ACETATE	0,01
10	13,81	TERPINOLENE	0,01
11	15,29	3-HEXEN-1-OL ACETATE	0,01
12	21,65	METHYL-p-CRESOL	0,51
13	21,67	LINALOOL Cis-OXIDE	0,01
14	21,98	SESQUITERPENE	0,04
15	22,90	SESQUITERPENE	0,02
16	23,19	alpha-CUBEBENE	0,21
17	23,82	delta-ELEMENE + SESQUITERPENE	0,13
18	24,54	BICYCLOELEMENE	0,02
19	24,75	YLANGENE	0,14
20	25,37	alpha-COPAENE	1,43
21	26,39	SESQUITERPENE	0,02
22	26,76	SESQUITERPENE	0,03
23	27,23	CYPERENE	0,02
24	27,58	SESQUITERPENE	0,05
25	27,93	beta1-CUBEBENE	0,18
26	28,31	LINALOOL	1,98
27	28,75	LINALYL ACETATE	0,01
28	29,64	epsilon-CADINENE	0,37
29	29,85	SESQUITERPENE	0,02
30	30,49	CALARENE	0,74

GCMS ANALYSIS (cont'd.)

PRODUCT NAME: YLANG YLANG ESSENTIAL OIL (#3) - 11162

Peak	RT (min)	Compound	%
31	30,81	beta-CARYOPHYLLENE	15,88
32	30,94	SESQUITERPENE	0,05
33	31,13	AROMADENDRENE	0,04
34	31,45	METHYL BENZOATE	0,30
35	32,14	CADINA-3,5-DIENE	0,29
36	32,46	GERMACRENE A	0,22
37	33,27	ZONARENE	0,42
38	33,40	SESQUITERPENE	0,04
39	33,61	alpha-HUMULENE	4,12
40	33,65	Cis-4,5-MUUROLADIENE	0,24
41	34,33	gamma-MUUROLENE	2,62
42	34,47	alpha-TERPINEOL	0,10
43	34,61	LEDENE	0,09
44	34,82	Z,E-alpha-FARNESENE	2,66
45	35,18	GERMACRENE D	21,25
46	35,28	MUUROLENE ISOMER	0,74
47	35,30	CADINENE ISOMER	0,46
48	35,43	SESQUITERPENE	0,38
49	35,45	BENZYL ACETATE	0,38
50	35,57	alpha-MUUROLENE	1,27
51	35,71	beta-BISABOLENE	0,03
52	35,81	SESQUITERPENE	0,11
53	35,86	BICYCLOGERMACRENE	0,45
54	36,07	beta-CURCUMENE	0,04
55	36,45	E,E-alpha-FARNESENE	11,27
56	36,53	delta-CADINENE	3,57
57	36,65	GERANYL ACETATE	4,65
58	36,68	gamma-CADINENE	0,75
59	36,98	METHYL SALICYLATE	0,01
60	37,03	beta-SESQUIPELLANDRENE	0,05

GCMS ANALYSIS (cont'd.)

PRODUCT NAME: YLANG YLANG ESSENTIAL OIL (#3) - 11162

Peak	RT (min)	Compound	%
61	37,32	alpha-CURCUMENE	0,01
62	37,43	CADINA-1,4-DIENE	0,27
63	37,71	alpha-AMORPHENE	0,32
64	38,16	2-PHENYLETHYL ACETATE	0,01
65	38,56	trans-ANETHOL	0,02
66	38,79	GERMACRENE B + cis-CALAMENENE	0,03
67	38,85	trans-CALAMENENE	0,05
68	39,02	GERANIOL	0,53
69	39,59	BUTYL BENZOATE	0,01
70	39,71	PHENYLMETHYL BUTYRATE	0,01
71	39,72	BENZYL ALCOHOL	0,02
72	40,39	Epi-CUBEBOL	0,04
73	40,61	AROMATIC COMPOUND	0,03
74	41,10	alpha-CALACORENE	0,01
75	41,61	SESQUITERPENOL	0,06
76	41,72	CUBEBOL	0,04
77	42,06	SESQUITERPENOL	0,02
78	42,12	SESQUITERPENOL	0,02
79	42,44	SESQUITERPENOL	0,06
80	42,65	PHENOLIC COMPOUND Mw=150	0,07
81	42,92	CARYOPHYLLENE EPOXIDE	0,05
82	43,07	ISOPRENYL BENZOATE	0,01
83	43,25	SESQUITERPENOL	0,04
84	43,50	METHYLEUGENOL	0,01
85	43,91	NEROLIDOL	0,15
86	44,27	SESQUITERPENIC EPOXIDE	0,01
87	44,37	CARYOPHYLLENOL	0,01
88	44,48	GLEENOL	0,03
89	44,58	Epi-CUBENOL	0,38
90	44,69	JUNEOL	0,33

GCMS ANALYSIS (cont'd.)

PRODUCT NAME: YLANG YLANG ESSENTIAL OIL (#3) - 11162

Peak	RT (min)	Compound	%
91	44,75	CUBENOL	0,31
92	44,87	p-CRESOL	0,02
93	44,96	GLOBULOL	0,21
94	45,16	GUAIOL	0,11
95	45,22	VIRIDIFLOROL	0,01
96	45,38	AROMATIC COMPOUND	0,02
97	45,43	AROMATIC COMPOUND	0,05
98	45,62	10-epi-gamma-EUDESOL	0,03
99	45,78	AROMATIC COMPOUND	0,03
100	45,80	SESQUITERPENOL	0,05
101	45,97	cis-3-HEXENYL BENZOATE	0,04
102	46,03	SESQUITERPENOL	0,01
103	46,36	CADINOL ISOMER	0,04
104	46,40	CINNAMYL ACETATE	0,36
105	46,46	AROMATIC COMPOUND	0,12
106	46,66	EUGENOL	0,43
107	46,74	METHYLISOEUGENOL	0,03
108	46,96	T-CADINOL	0,65
109	47,17	CADINOL ISOMER	0,03
110	47,31	alpha-MUUROLOL	1,02
111	47,52	delta-CADINOL	0,35
112	47,62	CADINOL ISOMER	0,28
113	47,79	SESQUITERPENOL	0,02
114	47,92	CADINOL ISOMER	0,07
115	48,08	alpha-EUDESOL	0,02
116	48,24	alpha-CADINOL	1,85
117	48,53	EUGENYL ACETATE	0,04
118	48,75	FARNESYL ACETATE	2,00
119	48,90	SESQUITERPENIC EPOXIDE	0,02
120	49,04	AROMATIC COMPOUND	0,03

GCMS ANALYSIS (cont'd.)

PRODUCT NAME: YLANG YLANG ESSENTIAL OIL (#3) - 11162

Peak	RT (min)	Compound	%
121	49,29	SESQUITERPENIC EPOXIDE	0,02
122	49,75	SESQUITERPENOL	0,18
123	49,99	SESQUITERPENOL	0,02
124	50,09	SESQUITERPENOL	0,05
125	50,33	ISOEUGENOL	0,15
126	50,42	FARNESOL	2,16
127	51,03	SESQUITERPENOL	0,02
128	51,84	SESQUITERPENOL	0,04
129	55,09	GERANYL BENZOATE	0,12
130	55,61	p-CRESYL BENZOATE	0,02
131	55,86	BENZYL BENZOATE	6,13
132	59,29	BENZYL SALICYLATE	1,46
133	61,62	PALMITIC ACID	0,03
		TOTAL	100,00