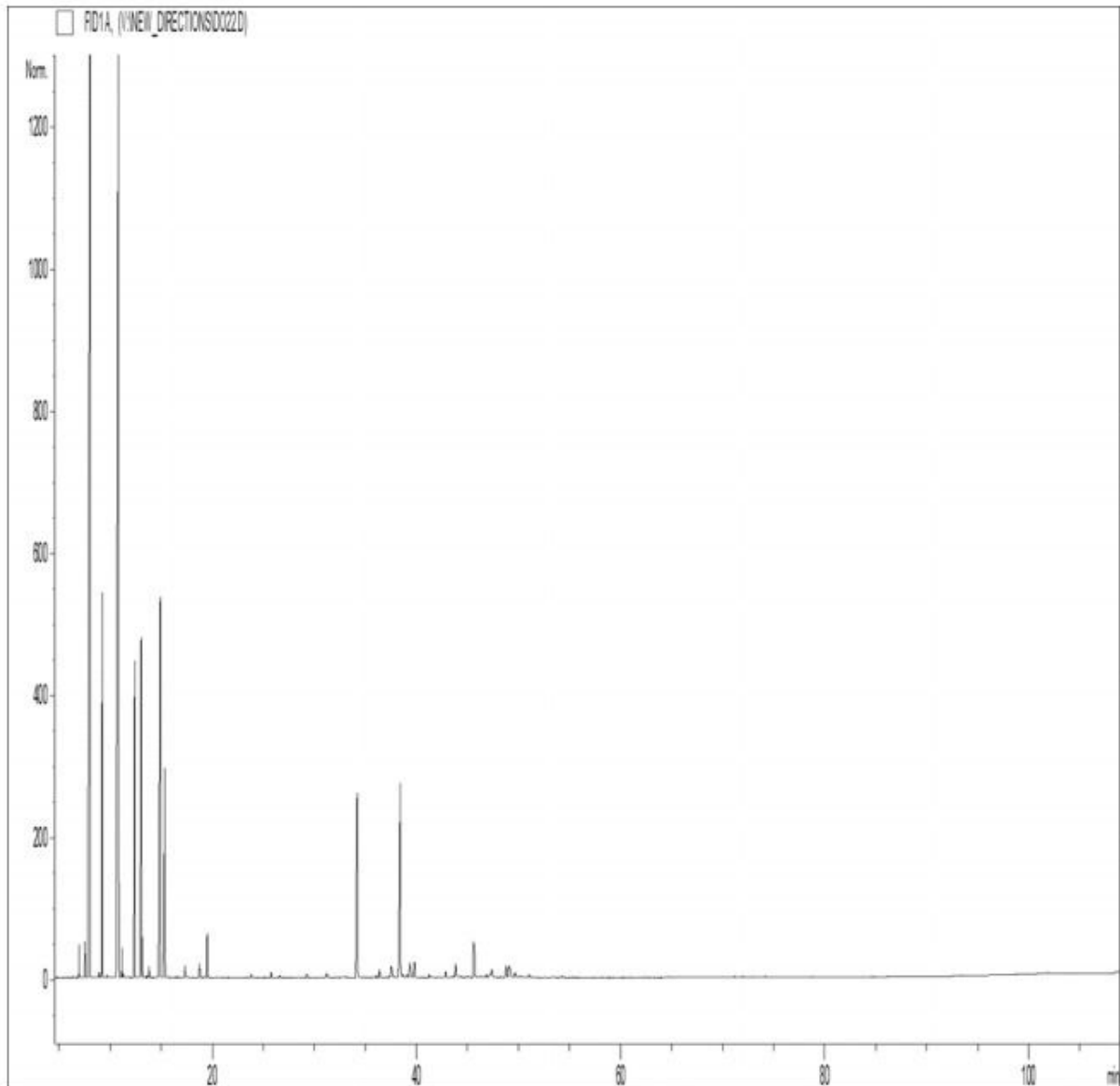


GC/MS
SPRUCE WHITE - 11136A182
NOVEMBER 2020



Due to volume turnover, this report is not lot specific, It is representative of the quality of this oil produced by the manufacturer of this product, Specific lots may vary slightly as is the case in natural products,

GCMS ANALYSIS (cont'd.)

PRODUCT NAME: SPRUCE WHITE ESSENTIAL OIL - 11136

Peak	RT (min)	Compound	%
1	6,31	FURAN, 2-ETHYL-	0,01
2	6,94	SANTENE	0,31
3	7,52	TRICYCLEN	0,45
4	7,98	alpha-PINENE	23,58
5	8,00	alpha-THUYENE	0,12
6	8,90	alpha-FENCHENE	0,06
7	9,21	CAMPHENE	4,80
8	9,67	HEXANAL	0,03
9	10,83	beta-PINENE	30,50
10	11,16	SABINENE	0,30
11	11,30	PINADIENE	0,05
12	12,43	delta3-CARENE	5,17
13	13,05	beta-MYRCENE	5,80
14	13,15	alpha-PHELLANDRENE	0,33
15	13,30	psi-LIMONENE	0,01
16	13,63	o-CYMENE	0,03
17	13,80	alpha-TERPINENE	0,15
18	14,90	LIMONENE	8,24
19	15,35	beta-PHELLANDRENE	3,39
20		1,8-CINEOLE	
21	15,95	2-HEXENAL	0,02
22	16,47	FURAN,2-PENTYL-	0,02
23	17,35	gamma-TERPINENE	0,24
24	18,77	p-CYMENE	0,29
25	19,18	ISOTERPINOLENE	0,02
26	19,53	TERPINOLENE	0,79
27	23,81	1-HEXANOL	0,07
28	25,77	3-HEXEN-1-OL	0,09
29	26,60	FENCHONE	0,06
30	28,05	COMPOUND Mw=150	0,02

GCMS ANALYSIS (cont'd.)

PRODUCT NAME: SPRUCE WHITE ESSENTIAL OIL - 11136

Peak	RT (min)	Compound	%
31	29,25	alpha-p-DIMETHYLSTYRENE	0,07
32	31,21	alpha-LONGIPINENE	0,09
33	31,25	FENCHYL ACETATE	0,03
34	32,65	alpha-CAMPHOLENAL	0,02
35	32,81	ALIPHATIC ESTER	0,02
36	33,11	LONGICYCLEN	0,03
37	34,21	CAMPHOR	4,15
38	36,06	beta-PINOCAMPHONE	0,06
39	36,36	LINALOOL	0,13
40	37,31	PINOCARVONE	0,03
41	37,54	LONGIFOLENE	0,41
42	38,12	trans-p-MENTH-2-EN-1-OL	0,01
43	38,41	BORNYL ACETATE	4,91
44	38,63	ISOBORNYL ACETATE	0,08
45	38,75	METHYL THYMOL ETHER	0,03
46	39,05	beta-ELEMENE	0,04
47	39,12	CAMPHENE HYDRATE	0,07
48	39,35	beta-CARYOPHYLLENE	0,42
49	39,78	TERPINENE-4-OL	0,30
50	41,24	MYRTENAL	0,07
51	41,35	MYRTENIC ESTER	0,03
52	42,84	trans-PINOCARVEOL	0,14
53	43,55	ESTRAGOL	0,05
54	43,81	alpha-HUMULENE	0,38
55	44,30	Z-beta-FARNESENE	0,06
56	45,00	gamma-MUROLENE	0,07
57	45,59	BORNEOL	0,64
58	45,65	alpha-TERPINEOL	0,62
59	46,11	GERMACRENE D	0,03
60	46,27	MUROLADIENE ISOMER	0,07

GCMS ANALYSIS (cont'd.)

PRODUCT NAME: SPRUCE WHITE ESSENTIAL OIL - 11136

Peak	RT (min)	Compound	%
61	46,82	alpha-SELINENE	0,08
62	47,20	PIPERITONE	0,16
63	47,37	alpha-MUUROLENE	0,27
64	48,20	beta-CURCUMENE	0,02
65	48,77	delta-CADINENE	0,33
66	49,07	gamma-CADINENE	0,50
67	49,65	SESQUITERPENE	0,14
68	50,09	CITRONELLOL	0,03
69	50,23	alpha-CURCUMENE	0,05
70	51,00	trans-alpha-BISABOLENE	0,06
71	51,17	MYRTENOL	0,04
72	53,35	cis-CALAMENENE	0,04
73	53,55	trans-CALAMENENE	0,02
74	54,27	p-CYMENE-8-OL	0,04
75	61,82	CARYOPHYLLENE EPOXIDE	0,02
76	63,18	METHYLEUGENOL	0,01
77	64,71	NEROLIDOL	0,03
78	68,95	cis-3-HEXENYL BENZOATE	0,02
79	71,18	T-CADINOL	0,02
80	71,98	alpha-MUUROL	0,02
81	72,95	GERANYLGERANIADIENE ISOMER Mw=272	0,02
82	74,14	alpha-CADINOL	0,04
83	93,36	Epi-MANOOL	0,02
84	101,84	DITERPENIC COMPOUND Mw=286	0,02
		TOTAL	100,00

DISCLAIMER:

The information contained in this Certificate of Analysis and/or GC/MS is obtained from current and reliable sources. Jade Bloom provides the information contained herein in good faith but makes no representation as to its comprehensiveness or accuracy. Individuals receiving this information must exercise their independent judgment in determining its appropriateness for a particular purpose. As the ordinary or otherwise use(s) of this product is outside the control of Jade Bloom, no representation or warranty, expressed or implied, is made as to the effect(s) of such use(s), (including damage or injury), or the results obtained. Jade Bloom expressly disclaims responsibility as to the ordinary or otherwise use(s). Furthermore, nothing contained herein should be considered as a recommendation by Jade Bloom as to the fitness for any use. The liability Jade Bloom is limited to the value of the goods and does not include any consequential loss. Jade Bloom shall not be liable for any errors or delays in the content, or for any actions taken in reliance thereon. Jade Bloom shall not be responsible for any damages resulting from use of or reliance upon this information. The user of the product is solely responsible for compliance with all laws and regulations applying to the use of the products, including intellectual property rights of third parties. This document is computer automated and is valid without signature