



Jade Bloom

Health, Healing, & Happiness®

Date: June 14th, 2021

CERTIFICATE OF ANALYSIS - GC PROFILING

Sample identification: Tea Tree – JB2108-889122

Type: Essential oil

Source: Melaleuca alternifolia ct. Terpinen-4-ol

ANALYSIS

Method: 10152018_10:1split.m - Analysis of the composition of an essential oil, or other volatile liquid, by GC-FID, identifications validated by GC-MS.

Analysis date: May 19th, 2021

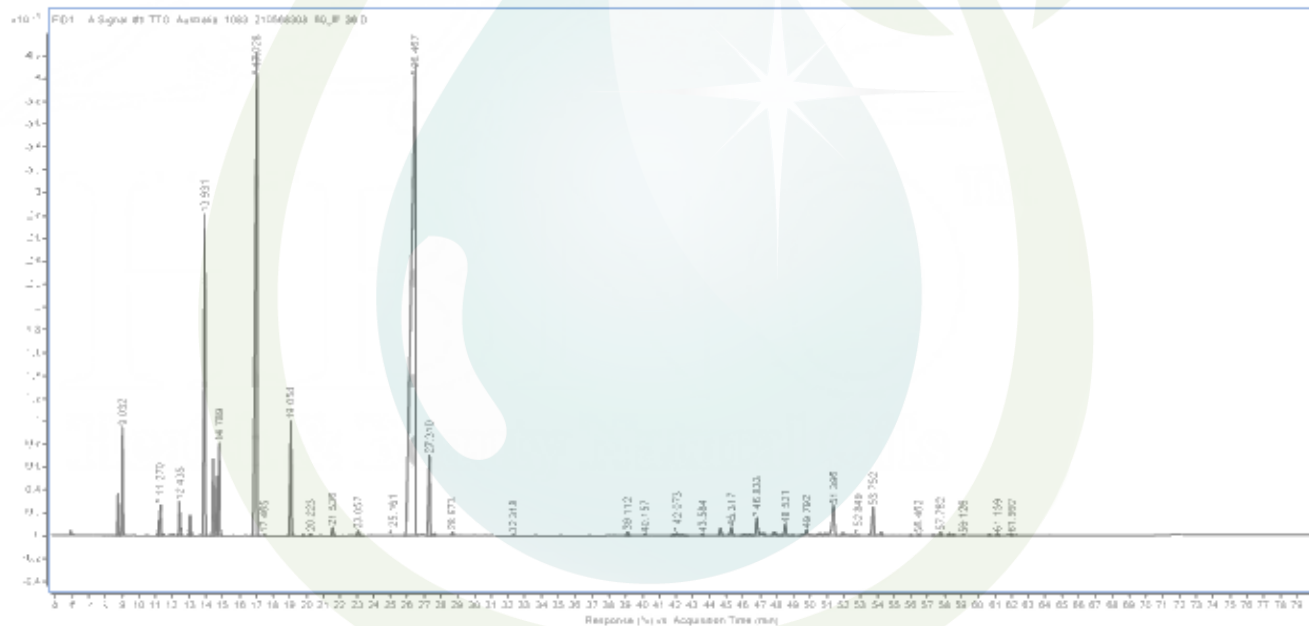
Physical aspect: Clear liquid

CONCLUSION

No adulterant, contaminant or diluents has been detected using this method.

Peak	Compound	RT	Area Sum %
1	α -Thujene	8.762	0.89
2	α -Pinene	9.032	2.34
3	Sabinene	11.211	0.22
4	β -Pinene	11.27	0.79
5	β -Myrcene	12.435	0.85
6	α -Phellandrene	13.047	0.53
7	α -Terpinene	13.931	9.71
8	p-Cymene	14.424	2.06
9	β -Phellandrene + Limonene	14.66	1.79
10	1,8-Cineole	14.789	2.46
11	γ -Terpinene	17.028	20.68
12	cis-Sabinene hydrate	17.465	0.02
13	α -Terpinolene	19.054	3.5
14	trans-Sabinene hydrate	19.781	0.02
15	Linalool	20.223	0.06
16	cis-para-Menth-2-en-1-ol	21.536	0.29
17	trans-p-2-Menthen-1-ol	23.057	0.22
18	Terpinen-4-ol	26.467	43.43
19	α -Terpineol	27.31	2.9
20	cis-Piperitol	27.6	0.06
21	trans-Piperitol	28.673	0.11
22	Piperitone	32.318	0.03
23	δ -Elemene	39.112	0.15
24	α -Cubebene	40.157	0.06
25	Isodene	41.864	0.05
26	α -Copaene	42.073	0.1
27	7-Cubebene	42.361	0.04
28	unknown	42.537	0.02
29	β -Elemene	43.584	0.04
30	α -Gurjunene	44.663	0.29
31	β -Caryophyllene	45.317	0.32
32	γ -Maaliene	46.052	0.05
33	β -Gurjunene	46.232	0.01
34	α -Maaliene	46.427	0.05
35	Aromandendrene	46.833	0.76
36	Selina-5,11-diene	47.246	0.11
37	trans-Muurolo-3,5-diene	47.858	0.12
38	α -Humulene	47.912	0.07
39	unknown	48.222	0.01
40	Alloaromadendrene	48.521	0.43
41	Valerena-4,7(11)-diene	48.964	0.02
42	γ -Gurjunene	49.54	0.04
43	trans-Cadina-1(6),4-diene	49.792	0.23
44	γ -Muurolole	50.083	0.04
45	β -Selinene	50.486	0.07

46	All-Aromadendr-9-ene	50.653	0.07
47	trans-Muurolo-4(14),5-diene	50.924	0.07
48	Viridiflorene + Bicyclogermacrene	51.396	1.63
49	α -Muurolole	51.961	0.11
50	unknown	52.437	0.03
51	γ -Cadinene	52.849	0.03
52	δ -Cadinene	53.752	1.24
53	trans-Cadina-1,4-diene	54.222	0.15
54	unknown	55.992	0.03
55	unknown	56.462	0.05
56	Spathulenol	57.345	0.04
57	Globulol	57.762	0.12
58	Viridiflorol	58.287	0.08
59	Cubeban-11-ol	58.547	0.04
60	Eudesm-5-en-11-ol analog	59.126	0.05
61	Rosifoliol	60.669	0.05
62	1-epi-Cubenol	61.159	0.09
63	Cubenol	61.992	0.05
64	α -Muurolol	62.253	0.02
	Total identified		99.86%



DISCLAIMER:

The information contained in this Certificate of Analysis and/or GC/MS is obtained from current and reliable sources. Jade Bloom provides the information contained herein in good faith but makes no representation as to its comprehensiveness or accuracy. Individuals receiving this information must exercise their independent judgment in determining its appropriateness for a particular purpose. As the ordinary or otherwise use(s) of this product is outside the control of Jade Bloom, no representation or warranty, expressed or implied, is made as to the effect(s) of such use(s), (including damage or injury), or the results obtained. Jade Bloom expressly disclaims responsibility as to the ordinary or otherwise use(s). Furthermore, nothing contained herein should be considered as a recommendation by Jade Bloom as to the fitness for any use. The liability Jade Bloom is limited to the value of the goods and does not include any consequential loss. Jade Bloom shall not be liable for any errors or delays in the content, or for any actions taken in reliance thereon. Jade Bloom shall not be responsible for any damages resulting from use of or reliance upon this information. The user of the product is solely responsible for compliance with all laws and regulations applying to the use of the products, including intellectual property rights of third parties. This document is computer automated and is valid without signature. This report may not be published, including online, without the written consent from Jade Bloom