



# JADE BLOOM

HEALTH, HEALING & HAPPINESS  
WWW.JADEBLOOM.COM

## GC/MS & COA

**Peppermint Oil – 201225450**

**May 19, 2021**

### **ANALYSIS**

**Type:** Essential oil

**Source :** Mentha x piperita

**Analysis date:** May 19, 2021

**Physical aspect:** Faintly yellow liquid

### **CONCLUSION**

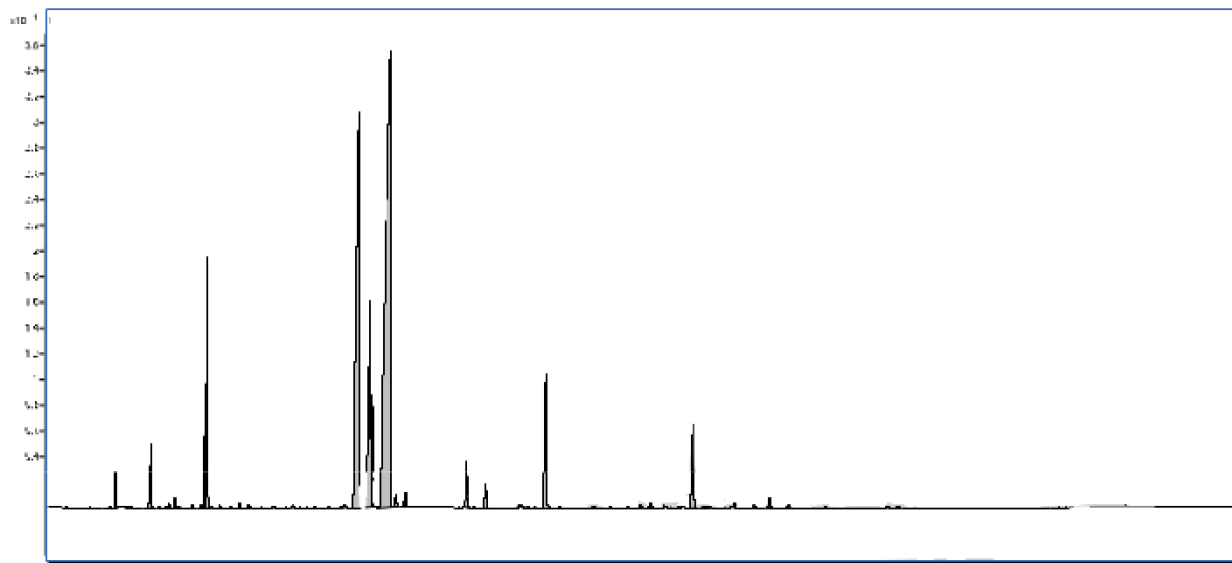
No adulterant, contaminant or diluent has been detected using this method.

| <b>Physico-Chemical Properties</b> | <b>Specifications</b> | <b>Results</b> |
|------------------------------------|-----------------------|----------------|
| <u>Specific Gravity at 20° C</u>   | 0.902                 | Complies       |
| <u>Refractive Index at 20° C</u>   | 1.4592                | Complies       |
| <u>Optical Rotation at 20° C</u>   | -26.68                | Complies       |

| <b>Peak</b> | <b>Compound</b>            | <b>RT</b> | <b>Area Sum %</b> |
|-------------|----------------------------|-----------|-------------------|
| 1           | cis-2-Hexenol              | 7.432     | 0.02              |
| 2           | $\alpha$ -Thujene          | 8.738     | 0.03              |
| 3           | $\alpha$ -Pinene           | 9.002     | 0.99              |
| 4           | Camphene analog            | 9.717     | 0.02              |
| 5           | 3-Methylcyclohexanone      | 9.902     | 0.01              |
| 6           | Sabinene + $\beta$ -Pinene | 11.244    | 1.64              |
| 7           | 1-Octen-3-ol               | 11.781    | 0.02              |
| 8           | 1-Octen-3-ol               | 12.211    | 0.01              |
| 9           | $\beta$ -Myrcene           | 12.407    | 0.1               |
| 10          | 3-Octanol                  | 12.753    | 0.23              |
| 11          | $\alpha$ -Phellandrene     | 13.018    | 0.04              |
| 12          | $\alpha$ -Terpinene        | 13.843    | 0.08              |

|    |                           |        |       |
|----|---------------------------|--------|-------|
| 13 | p-Cymene                  | 14.392 | 0.08  |
| 14 | Limonene                  | 14.669 | 1.72  |
| 15 | 1,8-Cineole               | 14.792 | 7.02  |
| 16 | (Z)- $\beta$ -Ocimene     | 15.597 | 0.06  |
| 17 | (E)- $\beta$ -Ocimene     | 16.3   | 0.03  |
| 18 | $\gamma$ -Terpinene       | 16.843 | 0.11  |
| 19 | cis-Sabinene hydrate      | 17.415 | 0.09  |
| 20 | cis-Linalool oxide        | 17.947 | 0.01  |
| 21 | Octanol                   | 18.208 | 0.02  |
| 22 | $\alpha$ -Terpinolene     | 19.005 | 0.03  |
| 23 | trans-Sabinene hydrate    | 19.799 | 0.01  |
| 24 | Linalool                  | 20.227 | 0.05  |
| 25 | Amyl isovalerate          | 20.637 | 0.02  |
| 26 | unknown                   | 21.578 | 0.02  |
| 27 | Isopulegol                | 23.441 | 0.1   |
| 28 | Menthone                  | 24.33  | 21.4  |
| 29 | Menthofuran + Isomenthone | 25.039 | 8.95  |
| 30 | Neo-Menthol               | 25.172 | 2.94  |
| 31 | Menthol                   | 26.303 | 41.41 |
| 32 | Isomenthol                | 26.666 | 0.38  |
| 33 | Neoisomenthol             | 27.22  | 0.15  |
| 34 | $\alpha$ -Terpineol       | 27.295 | 0.46  |
| 35 | Pulegone                  | 31.121 | 1.42  |
| 36 | Carvone                   | 31.563 | 0.04  |
| 37 | Piperitenone              | 32.314 | 0.74  |
| 38 | neo-Menthyl acetate       | 34.438 | 0.1   |
| 39 | (E)-2-Dodecenal           | 34.575 | 0.07  |
| 40 | Dihydroedulan I           | 35.002 | 0.04  |
| 41 | Dihydroedulan II          | 35.427 | 0.02  |
| 42 | Menthyl acetate           | 36.107 | 4.92  |

|    |                         |        |               |
|----|-------------------------|--------|---------------|
| 43 | Isomenthyl acetate      | 36.989 | 0.06          |
| 44 | Bicycloelemenene        | 39.127 | 0.05          |
| 45 | $\alpha$ -Copaene       | 42.086 | 0.08          |
| 46 | $\beta$ -Bourbonene     | 42.7   | 0.18          |
| 47 | $\beta$ -Elemene        | 43.589 | 0.05          |
| 48 | $\beta$ -Caryophyllene  | 45.377 | 3.19          |
| 49 | $\beta$ -Copaene        | 46.182 | 0.06          |
| 50 | $\alpha$ -Humulene      | 47.98  | 0.14          |
| 51 | (E)- $\beta$ -Farnesene | 49.218 | 0.07          |
| 52 | Germacrene D            | 50.202 | 0.34          |
| 53 | Bicyclogermacrene       | 51.404 | 0.06          |
| 54 | $\delta$ -Cadinene      | 53.742 | 0.02          |
| 55 | Caryophyllene oxide     | 57.622 | 0.05          |
| 56 | Viridiflorol            | 58.303 | 0.04          |
|    | <b>Total identified</b> |        | <b>99.98%</b> |



**DISCLAIMER:**

The information contained in this Certificate of Analysis and/or GC/MS is obtained from current and reliable sources. Jade Bloom provides the information contained herein in good faith but makes no representation as to its comprehensiveness or accuracy. Individuals receiving this information must exercise their independent judgment in determining its appropriateness for a particular purpose. As the ordinary or otherwise use(s) of this product is outside the control of Jade Bloom, no representation or warranty, expressed or implied, is made as to the effect(s) of such use(s), (including damage or injury), or the results obtained. Jade Bloom expressly disclaims responsibility as to the ordinary or otherwise use(s). Furthermore, nothing contained herein should be considered as a recommendation by Jade Bloom as to the fitness for any use. The liability Jade Bloom is limited to the value of the goods and does not include any consequential loss. Jade Bloom shall not be liable for any errors or delays in the content, or for any actions taken in reliance thereon. Jade Bloom shall not be responsible for any damages resulting from use of or reliance upon this information. The user of the product is solely responsible for compliance with all laws and regulations applying to the use of the products, including intellectual property rights of third parties. This document is computer automated and is valid without signature