



# JADE BLOOM

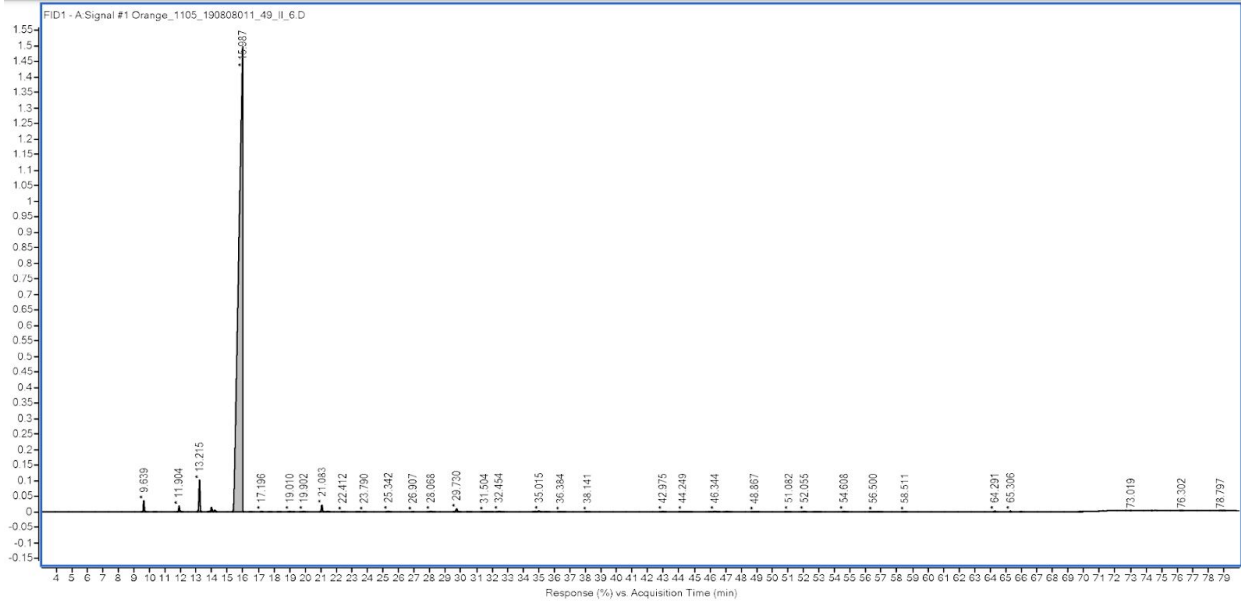
HEALTH, HEALING & HAPPINESS

WWW.JADEBLOOM.COM

GC/MS  
ORANGE ESSENTIAL OIL - 190808011  
DECEMBER 2019

Peak	Compound	RT	Area Sum %
1	$\alpha$ -Pinene	9.639	0.63
2	Camphene	10.37	0.02
3	Sabinene + $\beta$ -Pinene	11.904	0.39
4	$\beta$ -Myrcene	13.215	2.29
5	$\alpha$ -Phellandrene	13.836	0.05
6	Octanal	13.978	0.32
7	$\delta$ 3-carene	14.193	0.15
8	Limonene	15.987	94.03
9	(Z)- $\beta$ -Ocimene	16.511	0.01
10	(E)- $\beta$ -Ocimene	17.196	0.03
11	$\gamma$ -Terpinene	17.734	0.01
12	cis-Sabinene hydrate	18.312	0.02
13	Octanol	19.01	0.04
14	Isoterpinolene	19.764	0.01
15	$\alpha$ -Terpinolene	19.902	0.03
16	Linalool	21.083	0.5
17	Nonanal	21.448	0.06
18	trans-2,8-p-Mentha-dien-1-ol	22.412	0.02
19	cis-Limonene oxide	23.403	0.02
20	trans-Limonene oxide	23.79	0.02
21	Citronellal	25.342	0.06
22	Terpinen-4-ol	26.907	0.01
23	$\alpha$ -Terpineol	28.068	0.06
24	Decanal	29.73	0.28
25	trans-Carveol	30.509	0.02
26	Nerol	31.504	0.01
27	Citronellol	31.765	0.02
28	Neral	32.454	0.09
29	Perilla aldehyde	34.757	0.03
30	Geranial	35.015	0.1
31	Perilla alcohol	35.415	0.02
32	Perilla alcohol	36.384	0.03
33	Undecanal	38.141	0.02
34	$\alpha$ -Copaene	42.975	0.04
35	$\beta$ -Cubebene	44.249	0.03
36	$\beta$ -Elemene	44.467	0.03
37	Dodecanal	46.344	0.09
38	$\beta$ -Copaene	47.087	0.04
39	$\alpha$ -Humulene	48.867	0.02
40	Germacrene D	51.082	0.03
41	Valencene	52.055	0.04
42	$\alpha$ -Muurolene	52.857	0.02
43	$\delta$ -Cadinene	54.608	0.04
44	$\alpha$ -Elemol	56.5	0.04

46	$\beta$ -Sinensal	64.291	0.03
47	$\alpha$ -Sinensal	65.306	0.02
48	Nootkatone	65.975	0.01
49	unknown	73.019	0.01
50	unknown	76.198	0.01
51	unknown	76.302	0.02
52	unknown	78.797	0.03
53	unknown	79.012	0.03
	<b>Total identified</b>		<b>99.90%</b>



**DISCLAIMER:**

The information contained in this Certificate of Analysis and/or GC/MS is obtained from current and reliable sources. Jade Bloom provides the information contained herein in good faith but makes no representation as to its comprehensiveness or accuracy. Individuals receiving this information must exercise their independent judgment in determining its appropriateness for a particular purpose. As the ordinary or otherwise use(s) of this product is outside the control of Jade Bloom, no representation or warranty, expressed or implied, is made as to the effect(s) of such use(s), (including damage or injury), or the results obtained. Jade Bloom expressly disclaims responsibility as to the ordinary or otherwise use(s). Furthermore, nothing contained herein should be considered as a recommendation by Jade Bloom as to the fitness for any use. The liability Jade Bloom is limited to the value of the goods and does not include any consequential loss. Jade Bloom shall not be liable for any errors or delays in the content, or for any actions taken in reliance thereon. Jade Bloom shall not be responsible for any damages resulting from use of or reliance upon this information. The user of the product is solely responsible for compliance with all laws and regulations applying to the use of the products, including intellectual property rights of third parties. This document is computer automated and is valid without signature