

## COA and GC/MS Myrrh Oil

**Date:** : November 10th, 2020

### CERTIFICATE OF ANALYSIS - GC PROFILING

**Sample identification:** Myrrh Oil - 190935575

**Type:** Essential oil

**Source:** Commiphora myrrha

### ANALYSIS

#### **Method:**

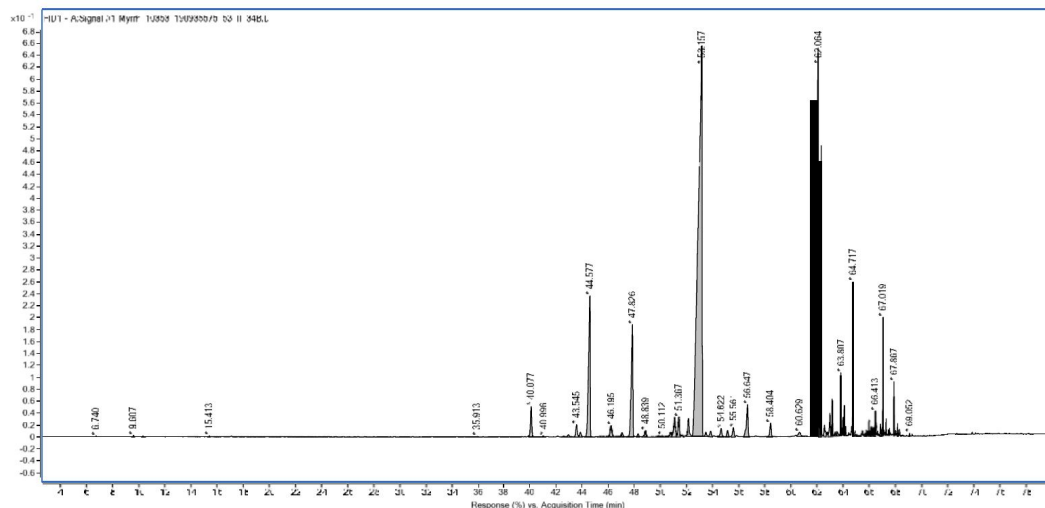
10152018\_10:1split.m - Analysis of the composition of an essential oil, or other volatile liquid, by GC-FID, identifications validated by GC-MS.

**Analysis date:** September 16th, 2019

**Physical aspect:** Light yellow viscous liquid

### CONCLUSION

No adulterant, contaminant or diluent has been detected using this method.



Peak	Compound	RT	Area Sum %
1	cis-2-Hexenol	6.74	0.01
2	$\alpha$ -Pinene	9.607	0.02
3	Camphene	10.327	0.01
4	Limonene	15.413	0.03
5	Bornyl acetate	35.913	0.03
6	$\delta$ -Elemene	40.077	1.06
7	$\alpha$ -Cubebene	40.996	0.05
8	$\alpha$ -Ylangene	42.558	0.03
9	$\alpha$ -Copaene	42.915	0.09
10	$\beta$ -Bourbonene	43.545	0.46
11	cis- $\beta$ -Elemene	43.847	0.17
12	$\beta$ -Elemene	44.577	6.16
13	$\beta$ -Caryophyllene	46.195	0.49
14	$\beta$ -Copaene	47.028	0.17
15	$\gamma$ -Elemene	47.826	4.64
16	cis-Muurolo-3,5-diene	48.254	0.12
17	$\alpha$ -Humulene	48.839	0.27
18	$\beta$ -Santalene	49.828	0.05
19	$\beta$ -Longipinene	50.112	0.06
20	$\gamma$ -Gurjunene	50.41	0.03
21	$\gamma$ -Muurolole	50.756	0.19
22	Germacrene D	51.058	0.84
23	$\beta$ -Selinene	51.367	0.65
24	$\alpha$ -Selinene	52.116	0.74
25	Curzerene	53.157	37.7
26	unknown	53.449	0.15
27	$\gamma$ -Cadinene	53.815	0.23
28	$\delta$ -Cadinene	54.622	0.37
29	trans- $\gamma$ -Bisabolene	55.122	0.24
30	Selina-3,7(11)-diene	55.561	0.38
31	Germacrene B	56.647	1.34
32	unknown	58.404	0.52
33	$\beta$ -Elemenone	60.629	0.3
34	Furanoidesma-1,3-diene	62.064	25.37
35	Lindestrene	62.297	9.05
36	$\tau$ -Cadinol	62.542	0.32
37	$\alpha$ -Eudesmol	62.962	0.55
38	furanodiene	63.137	0.58
39	unknown	63.356	0.07
40	unknown	63.496	0.13
41	Isofuranogermacrene	63.807	0.86
42	unknown	63.878	0.1
43	$\alpha$ -Elemyl acetate	63.983	0.24
44	Germacron	64.052	0.43
45	unknown	64.152	0.13

46	Methoxyfuranodiene analog	64.717	1.75
47	unknown	65.744	0.1
48	unknown	65.947	0.13
49	unknown	66.12	0.09
50	unknown	66.227	0.09
51	unknown	66.323	0.13
52	unknown	66.413	0.3
53	unknown	66.836	0.15
54	4,4'-Dimethyl-2,2'-dimethylenebicyclohexyl-3,3'-diene	67.019	0.92
55	unknown	67.092	0.06
56	unknown	67.262	0.13
57	unknown	67.446	0.05
58	unknown	67.524	0.07
59	Furanoeudesma-1,3-diene	67.867	0.45
60	unknown	68.147	0.1
61	unknown	69.052	0.04
	<b>Total identified</b>		<b>97.46%</b>

**DISCLAIMER:**

The information contained in this Certificate of Analysis and/or GC/MS is obtained from current and reliable sources. Jade Bloom provides the information contained herein in good faith but makes no representation as to its comprehensiveness or accuracy. Individuals receiving this information must exercise their independent judgment in determining its appropriateness for a particular purpose. As the ordinary or otherwise use(s) of this product is outside the control of Jade Bloom, no representation or warranty, expressed or implied, is made as to the effect(s) of such use(s), (including damage or injury), or the results obtained. Jade Bloom expressly disclaims responsibility as to the ordinary or otherwise use(s). Furthermore, nothing contained herein should be considered as a recommendation by Jade Bloom as to the fitness for any use. The liability Jade Bloom is limited to the value of the goods and does not include any consequential loss. Jade Bloom shall not be liable for any errors or delays in the content, or for any actions taken in reliance thereon. Jade Bloom shall not be responsible for any damages resulting from use of or reliance upon this information. The user of the product is solely responsible for compliance with all laws and regulations applying to the use of the products, including intellectual property rights of third parties. This document is computer automated and is valid without signature