



JADE BLOOM

HEALTH, HEALING & HAPPINESS
WWW.JADEBLOOM.COM

GC/MS & COA

Melissa Oil (Lemon Balm) – 137358

Melissa officinalis

ANALYSIS

Type: Essential oil

Source: Flowers and Leaves

Analysis date: November 20, 2020

Physical aspect:

CONCLUSION

No adulterant, contaminant or diluent has been detected using this method. This oil nearly complies with ISO standard for Lemon Oil

Physico-Chemical Properties

Specific Gravity at 20° C

Refractive Index at 20° C

Optical Rotation at 20° C

Specifications

0.878 to 0.890

1.475 to 1.490

-30° to +5.0°

Results

Complies

Complies

Complies

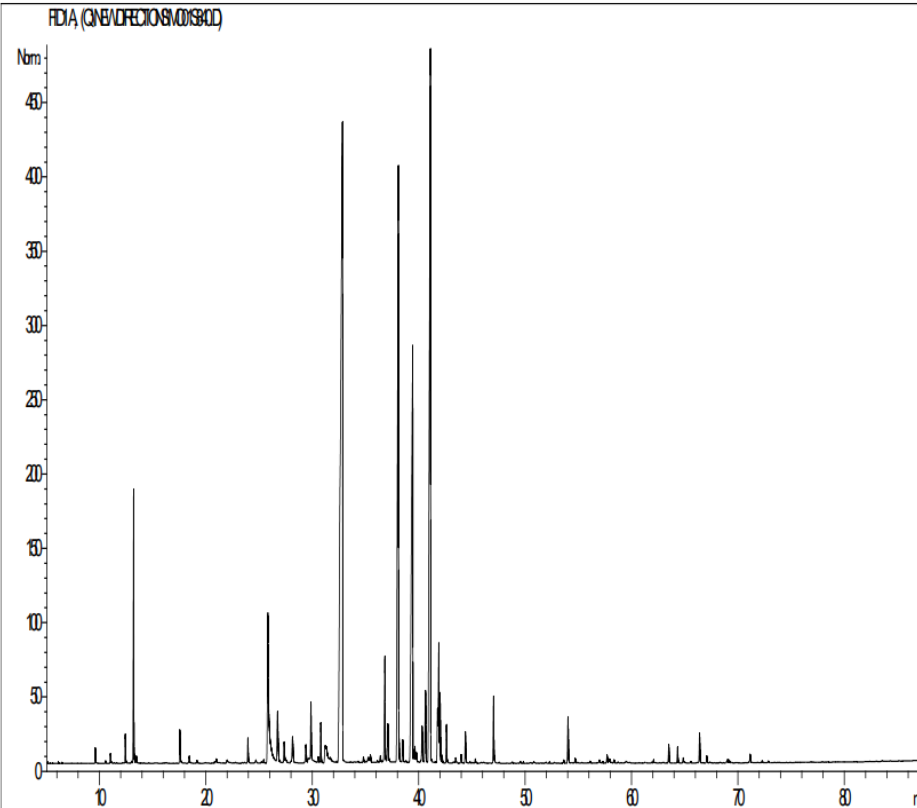
Peak	RT (min)	Compound	%
1	4,8	BUTANAL, 2-METHYL-	0,03
2	5,0	ISOVALERALDEHYDE	0,05
3	5,1	FURAN,2 -ETHYL-	0,02
4	6,1	alpha-PINENE	0,01
5	6,5	2,5-DIETHYLTETRAHYDROFURANE	0,01
6	9,6	beta-MYRCENE	0,16
7	10,6	1,8-CINEOLE, 2,3-DEHYDRO-	0,03
8	11,0	LIMONENE	0,13
9	11,4	Cis-ARBUSCULON	0,02
10	11,6	1,3,8-p-MENTHATRIENE	0,02
11	12,2	FURAN, 2-PENTYL	0,02
12	12,4	Cis-beta-OCIMENE	0,32
13	12,9	gamma-TERPINENE	0,01
14	13,0	MENTHATRIENE ISOMER	0,03
15	13,2	Trans-beta-OCIMENE	2,81
16	13,5	3-OCTANONE	0,10
17	14,2	HEXYL ACETATE	0,01
18	14,6	TERPINOLENE	0,01
19	16,1	3-HEXEN-1-OL ACETATE	0,01
20	16,3	TRIDECANE	0,01
21	17,5	6-METHYL-5-HEPTEN-2-ONE	0,45
22	18,3	1-HEXANOL	0,02
23	18,4	ROSE Cis-OXIDE	0,11
24	19,2	ROSE Trans-OXIDE	0,04
25	20,8	3-OCTANOL	0,02
26	20,9	NONANAL	0,03
27	21,0	GALBANOLENE	0,06
28	22,0	PHOTOCITRAL ISOMER	0,10
29	22,8	Cis-p-MENTHANE-8-OL	0,02
30	23,4	alpha-p-DIMETHYLSTYRENE	0,02

Peak	RT (min)	Compound	%
31	23,6	LINALOOL Cis-OXIDE	0,03
32	23,9	1-OCTEN-3-OL	0,33
33	24,7	alpha-CUBEBENE	0,08
34	25,2	NERYL OXIDE	0,03
35	25,4	AROMATIC COMPOUND	0,06
36	25,8	CITRONELLAL	4,66
37	26,7	alpha-COPAENE	1,02
38	27,3	EPIPHOTOCITRAL	0,43
39	27,6	alpha-BOURBONENE	0,09
40	28,0	BENZALDEHYDE	0,05
41	28,1	beta-BOURBONENE	0,59
42	29,4	beta1-CUBEBENE	0,43
43	29,5	PHOTOCITRAL A	0,66
44	29,9	LINALOOL	0,70
45	30,5	ISOPULEGOL	0,08
46	30,8	METHYL CITRONELLATE	0,52
47	31,2	PHOTOCITRAL B	1,15
48	31,3	COMPOUND Mw=152	0,14
49	31,6	SESQUITERPENE	0,05
50	32,3	beta-ELEMENE	0,02
51	32,8	beta-CARYOPHYLLENE	26,06
52	32,9	LAVANDULYL ACETATE	0,07
53	33,5	SESQUITERPENE	0,02
54	33,9	SESQUITERPENE	0,03
55	34,3	AROMATIC COMPOUND	0,03
56	34,8	CADINA-3,5-DIENE	0,08
57	35,2	SESQUITERPENE	0,08
58	35,3	SESQUITERPENE	0,08
59	35,5	ALLO-AROMADENDRENE	0,10
60	36,1	2,6-DIMETHYL-5-HEPTEN-1-OL	0,02

Peak	RT (min)	Compound	%
61	36,4	ZONARENE	0,11
62	36,8	alpha-HUMULENE	1,73
63	37,1	E-beta-FARNESENE + Cis-4,5-MUURADIENE	0,66
64	38,0	NERAL	13,76
65	38,2	gamma-MUUROLENE	0,27
66	38,5	METHYL GERANATE	0,41
67	38,8	alpha-TERPINEOL	0,08
68	39,4	GERMACRENE D	11,49
69	39,6	CADINENE ISOMER	0,41
70	39,8	SESQUITERPENE	0,18
71	40,2	alpha-SELINENE	0,10
72	40,3	alpha-MUUROLENE	0,62
73	40,6	NERYL ACETATE	1,29
74	41,1	GERANIAL	17,34
75	41,7	alpha-FARNESENE	0,73
76	41,8	delta-CADINENE	1,83
77	42,0	gamma-CADINENE	1,04
78	42,2	METHYL SALICYLATE	0,15
79	42,6	CITRONELLOL	0,55
80	43,2	TERPENIC ALCOHOL	0,03
81	43,5	CADINA-1,4-DIENE	0,11
82	43,9	alpha-AMORPHENE	0,14
83	44,4	NEROL	0,45
84	44,8	Cis-ISOGERANIOL	0,03
85	45,0	Trans-ISOGERANIOL	0,02
86	45,3	beta-DAMASCENONE	0,07
87	45,8	E,E-2,6-DIMETHYL-3,5,7-OCTATRIENE-2-OL	0,02
88	46,1	CALAMENENE	0,03
89	47,0	GERANIOL	0,97
90	47,5	E-GERANYL ACETONE	0,02

Peak	RT (min)	Compound	%
91	48,8	AROMATIC COMPOUND	0,02
92	49,5	épi-CUBEBOL	0,03
93	49,8	AROMATIC COMPOUND	0,02
94	50,8	HUMULENE OXIDE	0,04
95	51,9	beta-IONONE	0,02
96	52,2	CUBEBOL	0,02
97	53,6	ISOCARYOPHYLLENE OXIDE	0,05
98	54,0	CARYOPHYLLENE OXIDE	0,71
99	54,7	SESQUITERPENOL	0,06
100	56,1	AROMATIC COMPOUND	0,03
101	57,0	Epoxy-6,7-HUMULENE	0,05
102	57,3	NEROLIDOL	0,02
103	57,7	GERMACRA-1,5-DIEN-4-OL	0,12
104	57,9	Epi-CUBENOL + LEVOJUNENOL	0,09
105	58,1	SESQUITERPENOL	0,01
106	58,3	CUBENOL	0,05
107	58,7	TERPENIC KETONE	0,02
108	62,1	TRIMETHYL PENTADECANONE	0,05
109	63,0	EUGENOL	0,03
110	63,5	T-CADINOL	0,20
111	63,6	FOKIENOL	0,06
112	64,3	alpha-MUUROLOL	0,23
113	64,8	delta-CADINOL	0,08
114	65,5	GERANYL-alpha-TERPINENE	0,02
115	66,4	alpha-CADINOL	0,44
116	67,1	CITRONELLIC ACID	0,10
117	67,3	SESQUITERPENOL	0,02
118	68,3	SESQUITERPENIC OXIDE	0,02
119	68,9	SESQUITERPENIC OXIDE	0,02
120	69,0	NERIC ACID	0,06

Peak	RT (min)	Compound	%
121	69,2	CARYOPHYLLA-3,7-DIEN-6-OL	0,05
122	71,0	SESQUITERPENIC OXIDE	0,01
123	71,2	GERANIC ACID	0,14
124	72,2	SESQUITERPENIC OXIDE	0,03
125	72,9	SESQUITERPENIC OXIDE	0,03
TOTAL			99,96



DISCLAIMER:

The information contained in this Certificate of Analysis and/or GC/MS is obtained from current and reliable sources. Jade Bloom provides the information contained herein in good faith but makes no representation as to its comprehensiveness or

accuracy. Individuals receiving this information must exercise their independent judgment in determining its appropriateness for a particular purpose. As the ordinary or otherwise use(s) of this product is outside the control of Jade Bloom, no representation or warranty, expressed or implied, is made as to the effect(s) of such use(s), (including damage or injury), or the results obtained. Jade Bloom expressly disclaims responsibility as to the ordinary or otherwise use(s). Furthermore, nothing contained herein should be considered as a recommendation by Jade Bloom as to the fitness for any use. The liability Jade Bloom is limited to the value of the goods and does not include any consequential loss. Jade Bloom shall not be liable for any errors or delays in the content, or for any actions taken in reliance thereon. Jade Bloom shall not be responsible for any damages resulting from use of or reliance upon this information. The user of the product is solely responsible for compliance with all laws and regulations applying to the use of the products, including intellectual property rights of third parties. This document is computer automated and is valid without signature