



Jade Bloom

Health, Healing, & Happiness®

Date: September 16th ,2020

CERTIFICATE OF ANALYSIS - GC PROFILING

Sample identification: Marjoram Sweet - JB2099-817488

Type: Essential oil

Source: Origanum majorana ct. Sabinene hydrate/terpinen-4-ol

ANALYSIS

Method: 10152018_10:1split.m - Analysis of the composition of an essential oil, or other volatile liquid, by GC-FID, identifications validated by GC-MS.

Analysis date: September 15th, 2020

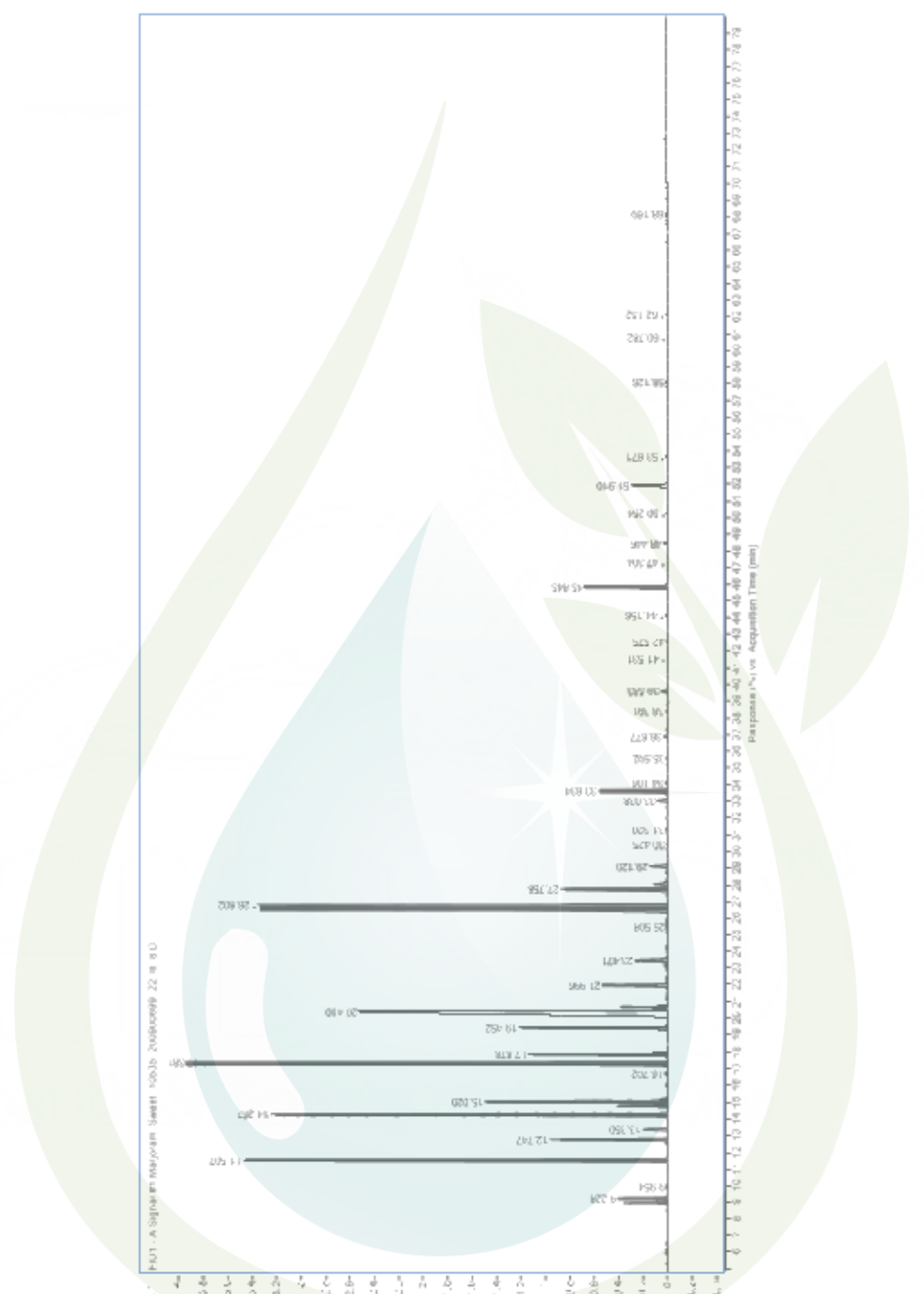
Physical aspect: Colorless liquid

CONCLUSION

No adulterant, contaminant or diluent has been detected using this method.

Peak	Compound	RT	Area Sum %
1	α -Thujene	8.956	0.68
2	α -Pinene	9.228	0.79
3	Camphene	9.954	0.02
4	Sabinene + β -Pinene	11.507	8.65
5	3-Octanone	12.529	0.04
6	β -Myrcene	12.747	2.16
7	α -Phellandrene	13.35	0.51
8	α -Terpinene	14.267	9.15
9	p-Cymene	14.753	0.98
10	Limonene	15.02	4.27
11	1,8-Cineole	15.132	0.1
12	(Z)- β -Ocimene	15.984	0.03
13	(E)- β -Ocimene	16.702	0.05
14	γ -Terpinene	17.381	14.48
15	cis-Sabinene hydrate	17.878	3.32
16	α -Terpinolene	19.452	3.36
17	trans-Sabinene hydrate	20.41	14.06
18	Linalool	20.683	0.97
19	cis-para-Menth-2-en-1-ol	21.996	1.54
20	α -Campholenal	22.366	0.02
21	unknown	22.967	0.01
22	trans-Pinocarveol	23.155	0.06
23	trans-para-Mentha-2-en-1-ol	23.471	0.89
24	unknown	24.261	0.02
25	Isomenthone	25.508	0.04
26	Borneol	25.827	0.02
27	Terpinen-4-ol	26.802	22.95
28	p-Cymen-8-ol	27.377	0.03
29	α -Terpineol	27.758	3.07
30	cis-Piperitol	28.034	0.31
31	cis-Dihydrocarvone	28.163	0.05
32	trans-Dihydrocarvone	28.721	0.05
33	unknown	28.865	0.02
34	trans-Piperitol	29.12	0.43
35	trans-Carveol	30.425	0.02
36	Citronellol	31.32	0.03
37	unknown	33.038	0.27
38	Linalyl acetate	33.634	1.93
39	trans-Ascaridol glycol	34.106	0.03
40	Citronellyl formate	35.19	0.01
41	Bornyl acetate	35.592	0.04

42	4-Terpinenyl acetate	36.877	0.13
43	Thymol analogue II	37.261	0.04
44	unknown	38.391	0.03
45	unknown	38.798	0.02
46	δ -Elemene	39.583	0.18
47	Eugenol	41.531	0.01
48	Neryl acetate	42.575	0.03
49	Geranyl acetate	44.156	0.07
50	β -Caryophyllene	45.845	2.51
51	Aromadendrene	47.304	0.02
52	trans- α -Bergamotene	47.591	0.01
53	α -Humulene	48.446	0.1
54	Alloaromadendrene	48.997	0.01
55	unknown	50.254	0.03
56	Germacrene D	50.676	0.02
57	Bicyclodermacrene	51.91	1.1
58	γ -Cadinene	53.341	0.01
59	(3E,6E)- α -Farnesene	53.671	0.04
60	δ -Cadinene	54.225	0.02
61	Spathulenol	57.847	0.04
62	Caryophyllene oxide	58.126	0.05
63	10-epi- γ -Eudesmol	60.782	0.02
64	Isospathulenol	62.152	0.03
65	τ -Cadinol	62.293	0.01
66	unknown	68.169	0.02
	Total identified		99.58%



DISCLAIMER:

The information contained in this Certificate of Analysis and/or GC/MS is obtained from current and reliable sources. Jade Bloom provides the information contained herein in good faith but makes no representation as to its comprehensiveness or accuracy. Individuals receiving this information must exercise their independent judgment in determining its appropriateness for a particular purpose. As the ordinary or otherwise use(s) of this product is outside the control of Jade Bloom, no representation or warranty, expressed or implied, is made as to the effect(s) of such use(s), (including damage or injury), or the results obtained. Jade Bloom expressly disclaims responsibility as to the ordinary or otherwise use(s). Furthermore, nothing contained herein should be considered as a recommendation by Jade Bloom as to the fitness for any use. The liability Jade Bloom is limited to the value of the goods and does not include any consequential loss. Jade Bloom shall not be liable for any errors or delays in the content, or for any actions taken in reliance thereon. Jade Bloom shall not be responsible for any damages resulting from use of or reliance upon this information. The user of the product is solely responsible for compliance with all laws and regulations applying to the use of the products, including intellectual property rights of third parties. This document is computer automated and is valid without signature. This report may not be published, including online, without the written consent from Jade Bloom