



Jade Bloom

Health, Healing, & Happiness®

Date: October 19th, 2020

CERTIFICATE OF ANALYSIS - GC PROFILING

Sample identification: Lemongrass - JB2037-727198

Type: Essential oil

Source: Cymbopogon flexuosus

ANALYSIS

Method: 10152018_10:1split.m - Analysis of the composition of an essential oil, or other volatile liquid, by GC-FID, identifications validated by GC-MS.

Analysis date: October 15th, 2020

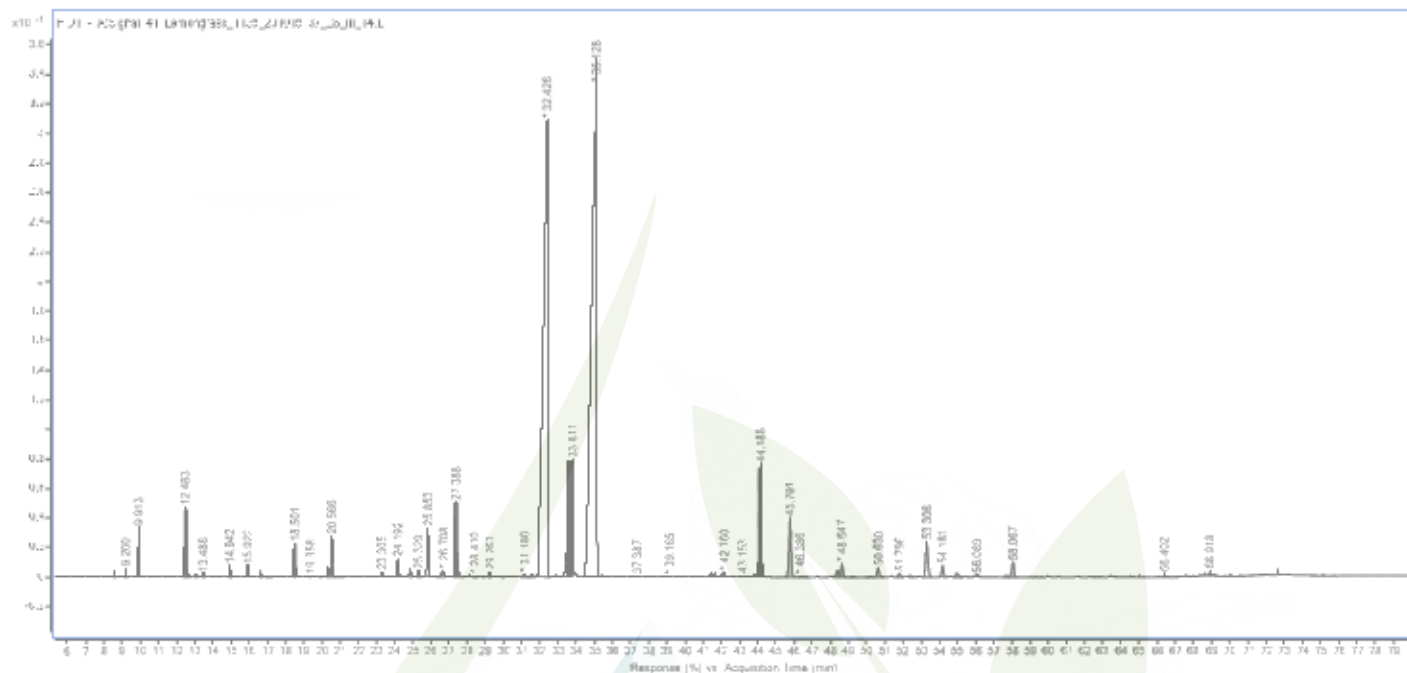
Physical aspect: yellow liquid

CONCLUSION

No adulterant, contaminant or diluent has been detected using this method. This oil nearly complies with ISO standard for Lemongrass oil.

Peak	Compound	RT	Area Sum %
1	Tricyclene	8.587	0.1
2	α -Pinene	9.2	0.16
3	Camphene	9.913	0.89
4	6-Methyl-5-heptene-2-one	12.483	1.3
5	β -Myrcene	12.693	0.05
6	unknown	13.081	0.05
7	Octanal	13.486	0.07
8	Limonene	14.942	0.25
9	(Z)- β -Ocimene	15.922	0.23
10	(E)- β -Ocimene	16.633	0.16
11	2,6-Dimethyl-5-heptenal (Melonal)	17.033	0.03
12	γ -Terpinene	17.169	0.01
13	4-Nonanone	18.501	0.79
14	α -Terpinolene	19.358	0.03
15	4-Nonanol	19.883	0.03
16	Rosefuran	20.369	0.22
17	Linalool	20.566	1.04
18	unknown	20.957	0.03
19	unknown	21.094	0.02
20	unknown	23.305	0.13
21	trans-Chrysanthemal	24.192	0.52
22	Citronellal	24.855	0.24
23	Borneol	25.329	0.18
24	Isoneral	25.853	1.29
25	Terpinen-4-ol	26.381	0.03
26	Rosefuran epoxide	26.708	0.25
27	Isogeranial	27.388	2.05
28	α -Terpineol	27.594	0.12
29	trans-Isopiperitenol	28.41	0.03
30	unknown	28.874	0.03
31	Decanal	29.267	0.13
32	cis-Isopiperitenol	29.932	0.03
33	Nerol	31.18	0.14
34	Citronellol	31.576	0.12
35	Neral	32.426	31.28
36	Geraniol	33.811	6.63
37	Geranial	35.128	40.9
38	unknown	35.439	0.03
39	Geranyl formate	37.387	0.03
40	unknown	39.165	0.02
41	Cyclosativene I	41.399	0.11
42	Cyclosativene II	41.659	0.12

43	α -Copaene	42.16	0.18
44	β -Cubebene	42.523	0.05
45	β -Bourbonene	43.153	0.04
46	cis- β -Elemene	43.421	0.02
47	β -Cubebene	43.797	0.06
48	Geranyl acetate	44.188	3.79
49	β -Caryophyllene	45.791	2.03
50	unknown	46.386	0.04
51	β -Copaene	46.617	0.03
52	α -Humulene	48.402	0.22
53	(E)-Isoeugenol	48.647	0.4
54	unknown	49.237	0.04
55	trans-Cadina-1(6),4-diene	50.23	0.04
56	Germacrene D	50.63	0.32
57	epi-Cubebol	51.796	0.11
58	α -Muurolene	52.412	0.05
59	γ -Cadinene	53.306	1.42
60	δ -Cadinene	54.181	0.36
61	(E)- γ -Bisabolene	54.977	0.15
62	Germacrene B	56.089	0.06
63	Caryophyllene oxide isomer	57.683	0.05
64	Caryophyllene oxide	58.067	0.53
65	Humulene oxide II	66.402	0.03
66	1-epi-Cubenol	68.598	0.01
67	Cubenol	68.918	0.04
	Total identified		99.65%



DISCLAIMER:

The information contained in this Certificate of Analysis and/or GC/MS is obtained from current and reliable sources. Jade Bloom provides the information contained herein in good faith but makes no representation as to its comprehensiveness or accuracy. Individuals receiving this information must exercise their independent judgment in determining its appropriateness for a particular purpose. As the ordinary or otherwise use(s) of this product is outside the control of Jade Bloom, no representation or warranty, expressed or implied, is made as to the effect(s) of such use(s), (including damage or injury), or the results obtained. Jade Bloom expressly disclaims responsibility as to the ordinary or otherwise use(s). Furthermore, nothing contained herein should be considered as a recommendation by Jade Bloom as to the fitness for any use. The liability Jade Bloom is limited to the value of the goods and does not include any consequential loss. Jade Bloom shall not be liable for any errors or delays in the content, or for any actions taken in reliance thereon. Jade Bloom shall not be responsible for any damages resulting from use of or reliance upon this information. The user of the product is solely responsible for compliance with all laws and regulations applying to the use of the products, including intellectual property rights of third parties. This document is computer automated and is valid without signature. This report may not be published, including online, without the written consent from Jade Bloom