



JADE BLOOM

HEALTH, HEALING & HAPPINESS
WWW.JADEBLOOM.COM

GC/MS & COA

Juniper Berry Oil – 11273B09

ANALYSIS

Type: Essential oil

Source : juniperus communis

Analysis date: December 1, 2020

Physical aspect: Almost colorless to light yellow

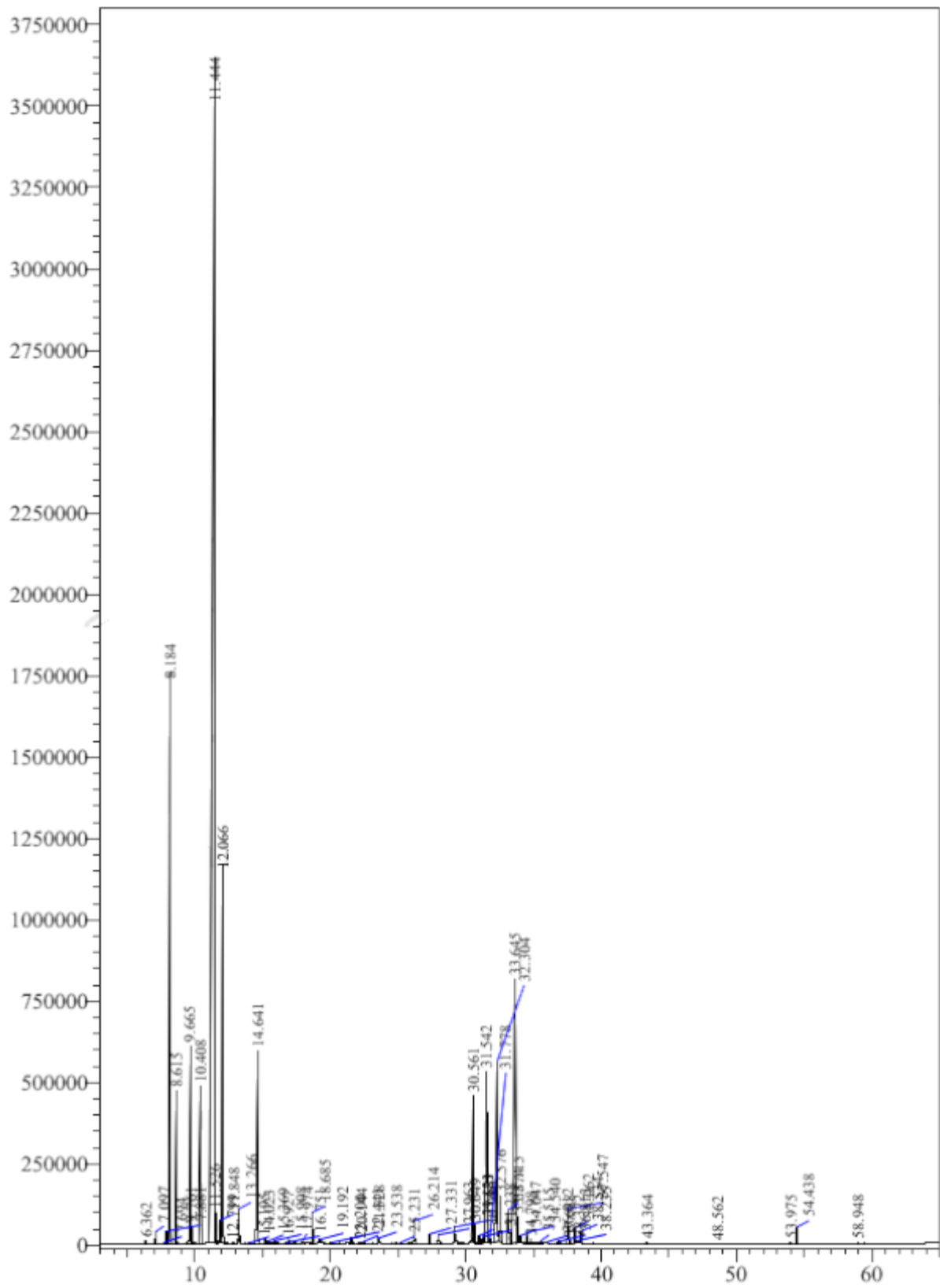
CONCLUSION

No adulterant, contaminant or diluent has been detected using this method.

Physico-Chemical Properties	Specifications	Results
<u>Specific Gravity at 20° C</u>	0.850 - 0.882	Complies
<u>Refractive Index at 20° C</u>	1.470 - 1.485	Complies
<u>Optical Rotation at 20° C</u>	-17 - -5	Complies

Peak#	Ret.Time	Area	Area%	Name
1	6.362	30664	0.0318	(1R)-2,6,6-Trimethylbicyclo[3.1.1]hept-2-ene
2	7.097	130621	0.1353	2-bornene
3	7.694	15295	0.0158	Tricyclene
4	7.881	178033	0.1844	Thujene alpha
5	8.184	8880007	9.1993	Alpha-pinene
6	8.615	1765951	1.8294	Camphene
7	9.665	2789653	2.8900	Sabinene
8	9.761	172028	0.1782	Pinene beta
9	10.408	3202135	3.3173	Myrcene
10	11.444	44901757	46.5162	Delta-3-carene
11	11.526	179238	0.1857	Terpinene alpha
12	11.848	294956	0.3056	Sylvestrene
13	12.066	6663400	6.9030	Limonene
14	12.799	27318	0.0283	Isovalerate butyl
15	13.266	362270	0.3753	Gamma-Terpinene
16	14.023	11288	0.0117	1-Octanol
17	14.641	3236139	3.3525	Alpha-terpinolene
18	15.195	46109	0.0478	Linalool
19	15.369	25007	0.0259	Isoamyl valerate
20	15.908	37021	0.0384	Butyrate 3-methyl-3-butenyl-3-methyl
21	16.751	14262	0.0148	Mentha-2,8-dien-1-ol cis-para
22	16.927	62475	0.0647	Norbomane, 2-isobutyl-
23	17.974	44613	0.0462	Alpha-phellandral-8-ol
24	18.685	431936	0.4475	Terpinen-4-ol
25	19.192	48350	0.0501	Alpha-Terpineol
26	20.144	16098	0.0167	Eucarvone
27	21.528	79966	0.0828	Butanoate hexyl-3-methyl
28	22.200	25638	0.0266	Linalyl acetate
29	22.441	25163	0.0261	Citronellate methyl
30	23.538	61212	0.0634	Bornyl acetate
31	25.231	12884	0.0133	Geranic acid methyl-ester
32	26.214	339999	0.3522	Alpha-Cubebene
33	27.331	146215	0.1515	Alpha-Copaene
34	27.963	164482	0.1704	Beta-Cubebene
35	29.183	209530	0.2171	Caryophyllene (E)
36	30.561	2794410	2.8949	Cadina-3,5-diene
37	30.649	197639	0.2047	Alpha-humulene
38	30.990	145734	0.1510	Muurola-4(14),5-diene cis
39	31.238	101827	0.1055	Beta-Copaene
40	31.542	3446900	3.5708	Cadina-1(6),4-diene
41	31.621	207300	0.2148	Gamma-Muurolene
42	31.778	53776	0.0557	Germacrene D
43	32.304	3722184	3.8560	Gamma-Amorphene
44	32.576	724473	0.7505	Alpha-Muurolene
45	33.115	764489	0.7920	Gamma-Cadinene

Peak#	Ret.Time	Area	Area%	Name
46	33.645	7335139	7.5989	Delta-Cadinene
47	33.874	333618	0.3456	Cadina-1,4-diene trans
48	34.047	101812	0.1055	Alpha-Cadinene
49	34.540	171285	0.1774	Elemol
50	34.798	83429	0.0864	Germacrene B
51	35.515	45694	0.0473	Germacren D-4-ol
52	36.012	10922	0.0113	Cubebol 10-epi
53	36.813	37309	0.0387	Beta-Oplopenone
54	37.547	563623	0.5839	Epicubenol
55	37.688	38559	0.0399	Gamma-Eudesmol
56	38.062	310733	0.3219	T-Muurolol
57	38.235	20365	0.0211	Alpha-Muurolol
58	38.372	22977	0.0238	Beta-Eudesmol
59	38.534	213972	0.2217	Cadin-4-en-10-ol
60	43.364	39752	0.0412	Acetoxyelemol 8-alpha
61	48.562	15706	0.0163	Camphorene m
62	53.975	36646	0.0380	Nezukol
63	54.438	329346	0.3412	Caryophyllene 14-hydroxy-9-epi-E
64	58.948	28056	0.0291	Abietal 4-epi
Total		96529388	100.0000	



DISCLAIMER:

The information contained in this Certificate of Analysis and/or GC/MS is obtained from current and reliable sources. Jade Bloom provides the information contained herein in good faith but makes no representation as to its comprehensiveness or accuracy. Individuals receiving this information must

exercise their independent judgment in determining its appropriateness for a particular purpose. As the ordinary or otherwise use(s) of this product is outside the control of Jade Bloom, no representation or warranty, expressed or implied, is made as to the effect(s) of such use(s), (including damage or injury), or the results obtained. Jade Bloom expressly disclaims responsibility as to the ordinary or otherwise use(s). Furthermore, nothing contained herein should be considered as a recommendation by Jade Bloom as to the fitness for any use. The liability Jade Bloom is limited to the value of the goods and does not include any consequential loss. Jade Bloom shall not be liable for any errors or delays in the content, or for any actions taken in reliance thereon. Jade Bloom shall not be responsible for any damages resulting from use of or reliance upon this information. The user of the product is solely responsible for compliance with all laws and regulations applying to the use of the products, including intellectual property rights of third parties. This document is computer automated and is valid without signature