



# Jade Bloom

Health, Healing, & Happiness®

**Date:** October 08th, 2020

## **CERTIFICATE OF ANALYSIS - GC PROFILING**

**Sample identification:** Frankincense Serrata - JB2032-238823

**Type:** Essential oil

**Source:** Boswellia serrata

## **ANALYSIS**

**Method:** 10152018\_10:1split.m - Analysis of the composition of an essential oil, or other volatile liquid, by GC-FID, identifications validated by GC-MS.

**Analysis date:** October 07th, 2020

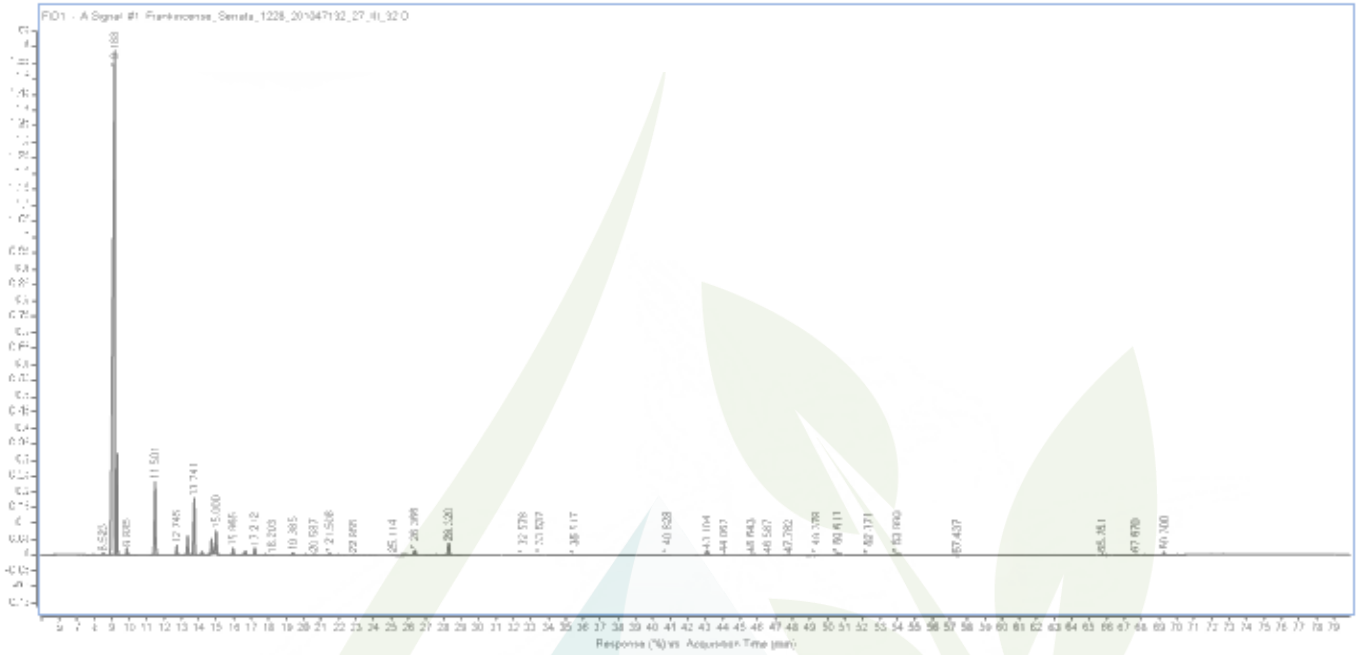
**Physical aspect:** Clear liquid

## **CONCLUSION**

No adulterant, contaminant or diluent has been detected using this method.

Peak	Compound	RT	Area Sum %
1	Bornylene	7.982	0.02
2	(3Z)-Hexenol	8.523	0.14
3	$\alpha$ -Thujene	9.188	70.35
4	$\alpha$ -Pinene	9.338	5.7
5	unknown	9.885	0.46
6	Camphene	9.987	0.06
7	Thuja-2,4(10)-diene	10.33	0.01
8	m-Cymene	11.264	0.04
9	Sabinene + $\beta$ -Pinene	11.501	6
10	$\beta$ -Myrcene	12.745	0.74
11	$\alpha$ -Phellandrene	13.362	1.61
12	$\delta$ 3-carene	13.741	4.79
13	$\alpha$ -Terpinene	14.188	0.28
14	o-Cymene	14.605	0.04
15	p-Cymene	14.741	1.2
16	Limonene	15	2.01
17	(Z)- $\beta$ -Ocimene	15.965	0.6
18	unknown	16.457	0.05
19	(E)- $\beta$ -Ocimene	16.667	0.33
20	$\gamma$ -Terpinene	17.212	0.63
21	cis-Sabinene hydrate	17.786	0.1
22	cis-p-Mentha-2,8-dien-1-ol	18.203	0.01
23	$\alpha$ -Terpinolene	19.385	0.24
24	trans-Sabinene hydrate	20.115	0.07
25	Linalool	20.587	0.12
26	unknown	21.428	0.03
27	$\beta$ -Thujone	21.508	0.17
28	trans-p-2,8-Menthadien-1-ol	21.973	0.05
29	$\alpha$ -Campholenal	22.337	0.01
30	Allo-Ocimene	22.855	0.06
31	Pinocarveol<trans->	23.102	0.01
32	trans-para-Mentha-2-en-1-ol	23.452	0.05
33	trans-Verbenol	23.804	0.02
34	$\alpha$ -Phellandrene-8-ol analog	24.03	0.01
35	cis-Verbenol	25.114	0.03
36	Borneol	25.363	0.01
37	$\alpha$ -Phellandrene-8-ol	25.654	0.03
38	cis-Sabinol	25.834	0.07
39	Umbellulone	26.183	0.01
40	Terpinen-4-ol	26.366	0.51
41	unknown	27.063	0.01

42	p-Cymen-8-ol	27.245	0.01
43	$\alpha$ -Terpineol	27.587	0.04
44	unknown	28.047	0.01
45	Methyl chavicol	28.32	1.34
46	Verbenone	28.92	0.02
47	unknown	32.578	0.02
48	unknown	33.537	0.02
49	Bornyl acetate	35.517	0.02
50	$\alpha$ -Cubebene	40.56	0.01
51	$\alpha$ -Terpinyl acetate	40.828	0.03
52	$\alpha$ -Copaene	42.481	0.08
53	$\beta$ -Bourbonene	43.104	0.63
54	unknown	44.067	0.08
55	Methyleugenol	45.643	0.08
56	$\beta$ -Caryophyllene & $\beta$ -Ylangene	45.807	0.05
57	$\beta$ -Copaene	46.587	0.05
58	trans- $\alpha$ -Bergamotene	47.525	0.03
59	Isogermacrene D	47.782	0.04
60	Alloaromadendrene	48.926	0.02
61	unknown	49.378	0.04
62	$\gamma$ -Muurolene + Germacrene D	50.611	0.21
63	unknown	50.752	0.12
64	$\alpha$ -Muurolene	52.371	0.01
65	$\gamma$ -Cadinene	53.265	0.02
66	$\delta$ -Cadinene	53.99	0.1
67	Elemicin	57.437	0.02
68	$\alpha$ -Phellandrene dimer I	65.751	0.04
69	$\alpha$ -Phellandrene dimer II	65.987	0.01
70	Cembrene A	67.67	0.03
71	Verticilla-4(20),7,11-triene	68.201	0.01
72	Cembrenol	69.3	0.1
	<b>Total identified</b>		<b>99.62%</b>



**DISCLAIMER::**

The information contained in this Certificate of Analysis and/or GC/MS is obtained from current and reliable sources. Jade Bloom provides the information contained herein in good faith but makes no representation as to its comprehensiveness or accuracy. Individuals receiving this information must exercise their independent judgment in determining its appropriateness for a particular purpose. As the ordinary or otherwise use(s) of this product is outside the control of Jade Bloom, no representation or warranty, expressed or implied, is made as to the effect(s) of such use(s), (including damage or injury), or the results obtained. Jade Bloom expressly disclaims responsibility as to the ordinary or otherwise use(s). Furthermore, nothing contained herein should be considered as a recommendation by Jade Bloom as to the fitness for any use. The liability Jade Bloom is limited to the value of the goods and does not include any consequential loss. Jade Bloom shall not be liable for any errors or delays in the content, or for any actions taken in reliance thereon. Jade Bloom shall not be responsible for any damages resulting from use of or reliance upon this information. The user of the product is solely responsible for compliance with all laws and regulations applying to the use of the products, including intellectual property rights of third parties. This document is computer automated and is valid without signature. This report may not be published, including online, without the written consent from Jade Bloom