

GC-MS Profiling Analysis
Prepared for Jade Bloom, Inc

Date: January 17, 2018
Sample: Wintergreen
Type: Essential Oil
Source: *Gaultheria procumbens*
Batch: 171225

IDENTIFIED COMPOUNDS

Identification	Column: BP5			Column: WAX			Molecular Class
	R.T.	R.I.	%	%	R.I.	R.T.	
<i>cis</i> -Hex-3-en-1-ol	2.49	864	0.13	0.12	1327	5.23	Aliphatic alcohol
<i>trans</i> -Hex-2-en-1-ol	2.68	878	0.02	0.02	1351	5.59	Aliphatic alcohol
Hexanol	2.72	881	0.06	0.06	1302	4.86	Aliphatic alcohol
α -Pinene	3.42	926	0.07	0.07	937	1.02	Monoterpene
β -Pinene	4.21	973	0.03	0.03	1035	1.59	Monoterpene
Phenol	5.12	1024	0.01				Simple phenolic
para-Cymene	5.15	1026	0.01	0.01	1204	3.44	Monoterpene
Limonene	5.18	1027	0.01	0.01	1134	2.57	Monoterpene
β -Phellandrene	5.23	1030	0.03	0.04	1141	2.66	Monoterpene
1,8-Cineole	5.27	1033	0.01	0.02	1151	2.78	Monoterp. ether
Benzyl alcohol	5.73	1057	0.03	0.06	1778	21.50*	Simple phenolic
Terpinolene	6.22	1084	0.01	0.01	1218	3.64	Monoterpene
Linalool	6.71	1106	0.07	0.07	1495	8.33	Monoterp. alcohol
Benzyl acetate	8.55	1173	0.02	0.02	1619	12.76	Phenolic ester
Methyl salicylate	9.84	1211	99.14	99.19	1670	15.17	Phenolic ester
Geraniol	11.93	1257	0.03	[0.06]	1778	21.50*	Monoterp. alcohol
Ethyl salicylate	12.55	1270	0.09	0.08	1696	16.47	Phenolic ester
Eugenol	17.77	1357	0.03	0.03	2055	37.69	Phenylpropanoid
Total identified			99.80%	99.84%			

*: Two or more compounds are coeluting on this column

[xx]: Duplicate percentage due to coelutions, not taken account in the identified total

Note: no correction factor was applied

OTHER DATA

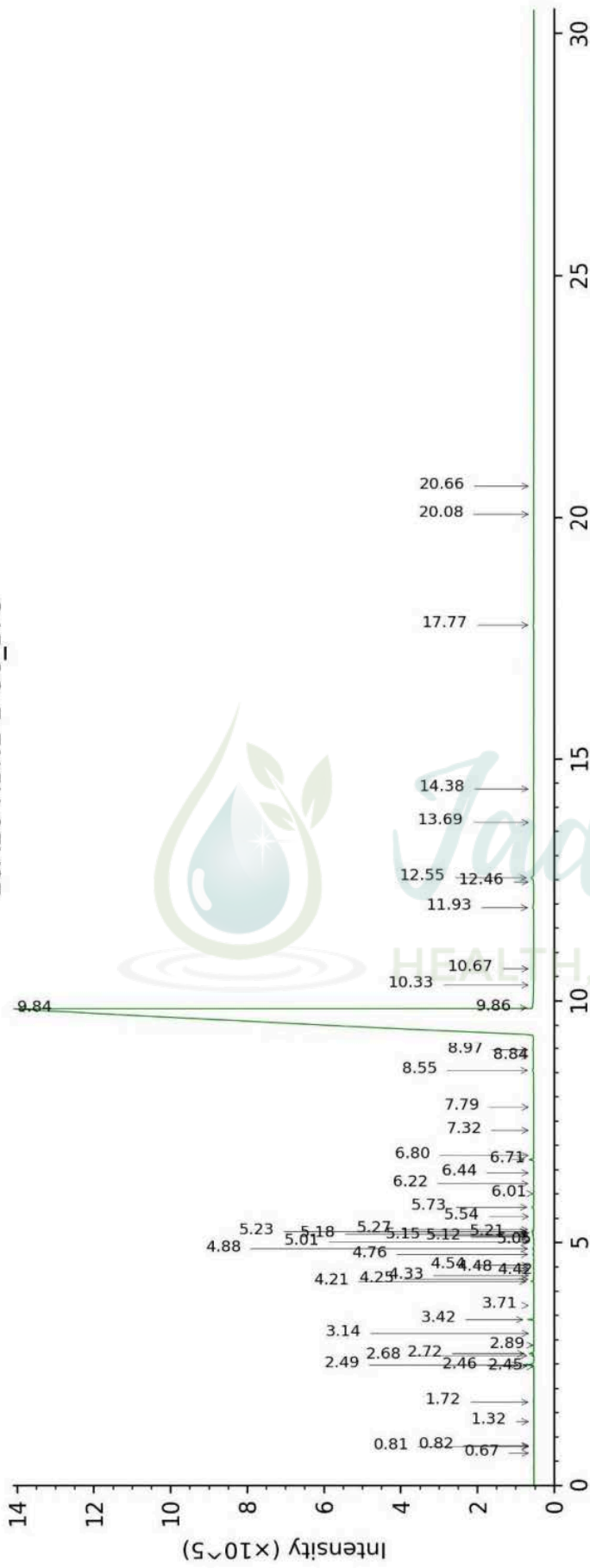
Physical aspect : Clear liquid

Refractive index : 1.5350 \pm 0.0003 (20 °C)

CONCLUSION

No adulterant, contaminant or diluent were detected using this method.

18A16-HBNI1-1-CC_BP5



18A16-HBN1-1-CC_WAX

