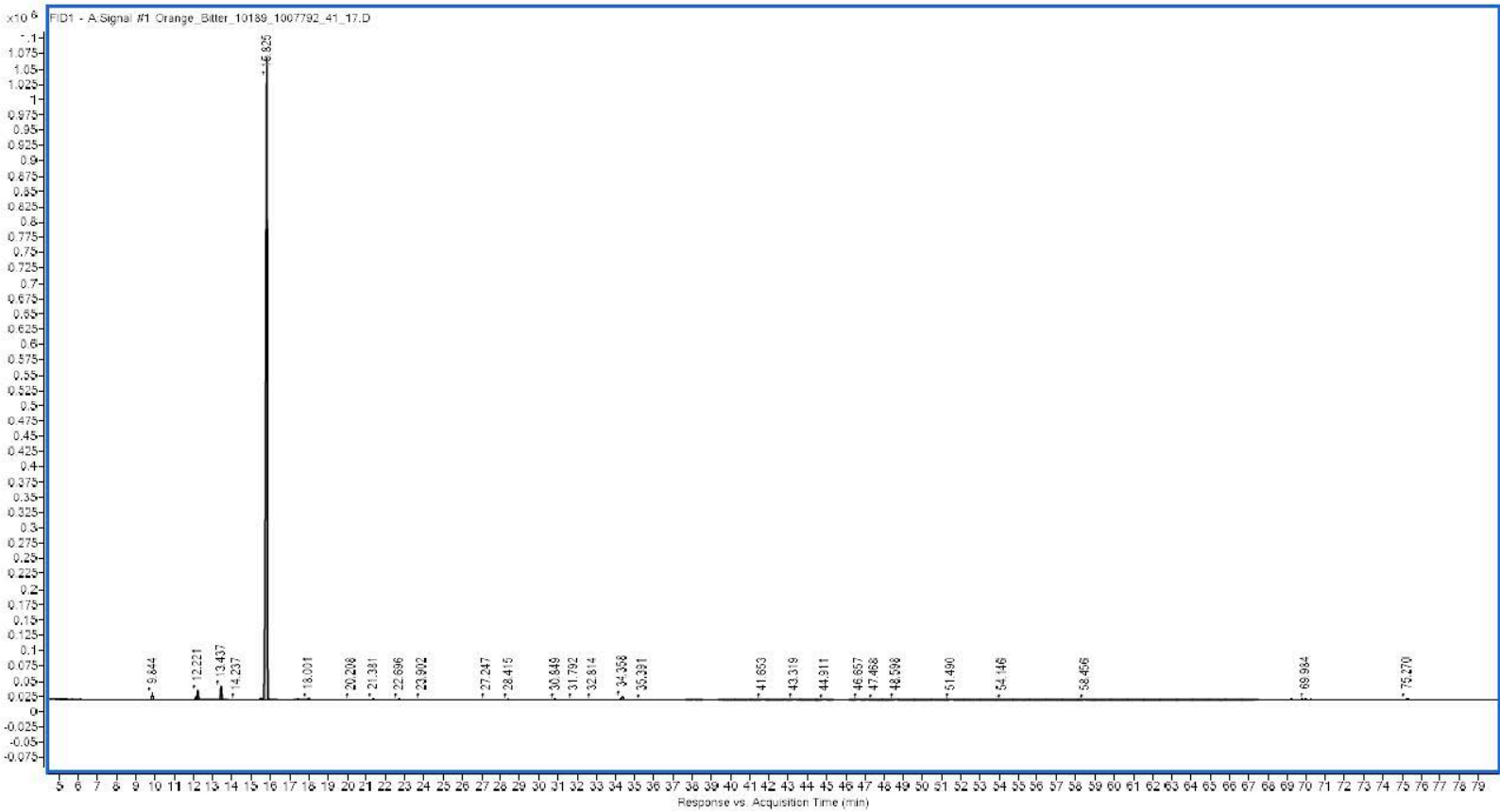


GC-MS Profiling Analysis Prepared for Jade Bloom, Inc

Date: August 19, 2018
Sample: Bitter Orange
Type: Essential Oil
Source: *Citrus Aurantium*
Batch: 1007792

Peak	Compound	RT	Area Sum %
1	α -Thujene	9.558	0.03
2	α -Pinene	9.844	0.58
3	Camphene	10.583	0.05
4	Sabinene	12.144	0.24
5	β -Pinene	12.221	1.02
6	β -Myrcene	13.437	1.45
7	α -Phellandrene	14.062	0.04
8	Octanal	14.237	0.06
9	p-Cymene	15.499	0.21
10	Limonene	15.825*	93.36
11	1,8-Cineole	15.825*	[93.36]
12	(E)- β -Ocimene	17.442	0.08
13	γ -Terpinene	18.001	0.17
14	α -Terpinolene	20.208	0.06
15	Linalool	21.381	0.16
16	Nonanal	21.774	0.02
17	trans-2,8-p-Mentha-dien-1-ol	22.696	0.11
18	cis-Limonene oxide	23.724	0.06
19	cis-p-Mentha-2,8-dien-1-ol	23.902	0.08
20	trans-Limonene oxide	24.129	0.04
21	Terpinen-4-ol	27.247	0.09
22	α -Terpineol	28.415	0.14
23	cis-Piperitol	28.779	0.03
24	Decanal	30.086	0.09
25	trans-Carveol	30.849	0.17
26	Nerol	31.792	0.1
27	Neral	32.814	0.1
28	Linalyl acetate	34.358	0.52
29	(E)-Isoeugenol	35.142	0.05
30	Geranial	35.391	0.06
31	unknown	41.653	0.06
32	Neryl acetate	43.319	0.09
33	Geranyl acetate	44.911	0.15
34	β -Caryophyllene	46.657	0.11
35	unknown	47.468	0.02
36	unknown	48.598	0.03
37	Germacrene D	51.49	0.08
38	γ -Cadinene	54.146	0.03
39	(E)-Nerolidol	58.456	0.06
40	unknown	69.23	0.01
41	unknown	69.804	0.01
42	unknown	69.946	0.02
43	unknown	69.984	0.02
44	unknown	75.27	0.13
	Total identified		99.70%



Jade Bloom

HEALTH, HEALING & HAPPINESS

