

Sample Information

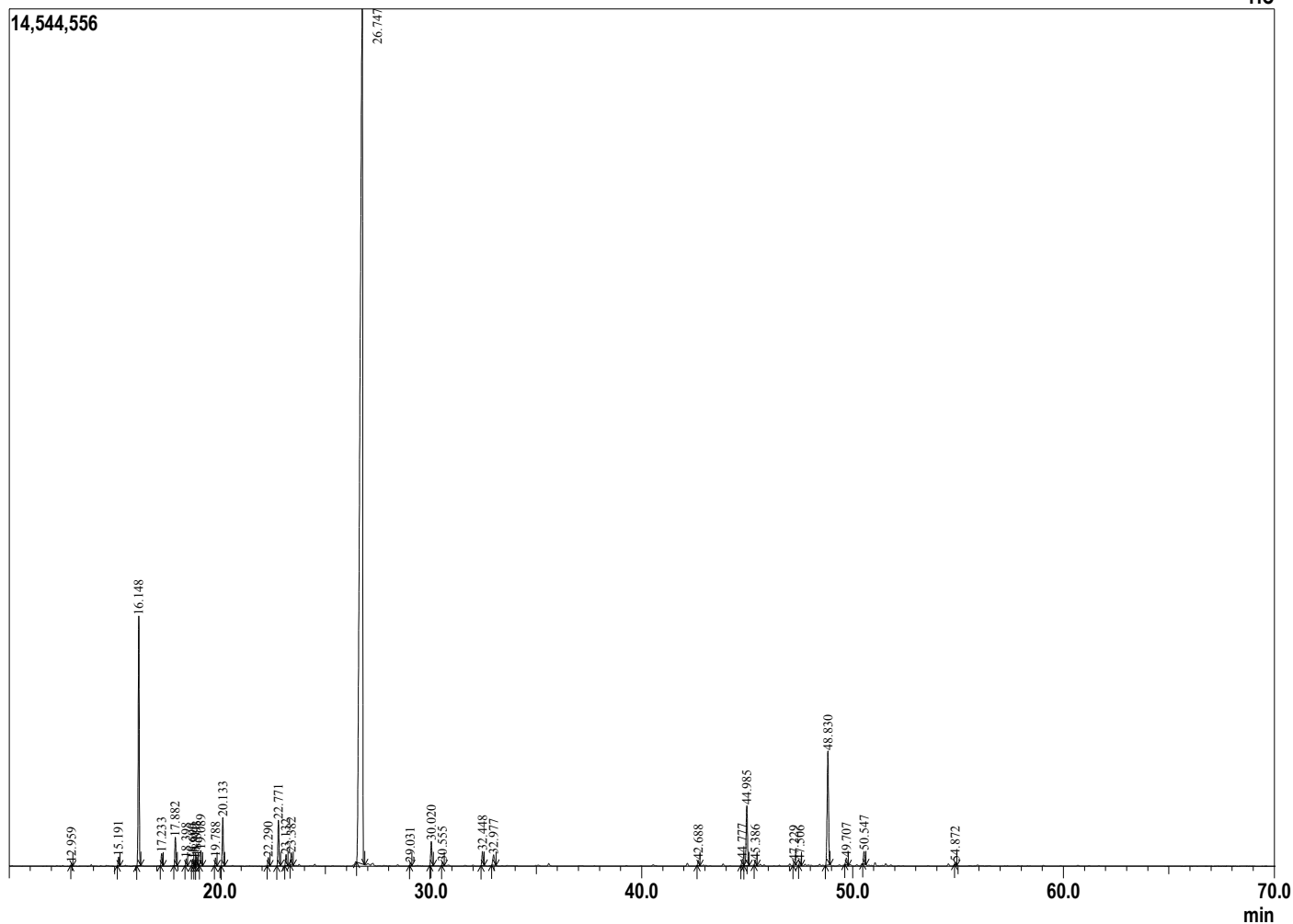
Analyzed by : Dr. Prabodh Satyal
 Analyzed : 4/19/2018 7:36:00 AM
 Sample Type : Essential Oil
 Sample Name : Verbena
 ARC# : JB180418B SAP# 00000
 Injection Volume : 0.10
 Data File : C:\Users\psatyall\Google Drive\ARC-GC-4\Verbena JB JB180418B.qgd



Peak Report TIC

R.Time	Name	Area%
6.601	Pentenol <Z>	0.07
12.959	Pinene <alpha>	0.05
15.191	Sabinene	0.21
16.148	Myrcene	6.27
17.233	Phellandrene <alpha>	0.32
17.882	Isomyrcenol	0.74
18.398	Cymene<para>	0.19
18.699	Limonene	0.17
18.810	Phellandrene <beta>	0.15
18.893	1,8-cineole	0.25
19.089	Ocimene <Z-beta>	0.40
19.788	Ocimene <E-beta>	0.21
20.133	Tagetone <dihydro>	1.29
22.290	Hexenal <Z> diethyl acetal	0.22
22.771	Epoxymyrcene<6,7->	1.26
23.132	Hexenyl propionate <3Z>	0.30
23.382	Linalool	0.35
26.747	Myrcenone	56.06
29.031	Shisofuran	0.07
30.020	Terpineol <alpha>	0.71
30.555	Dihydro carveol<iso>	0.09
32.448	Ocimenone<Z->	0.43
32.977	Tagetenone <trans>	0.45
42.688	Bourbonene <alpha>	0.16
44.777	Cedrene <alpha>	0.21
44.985	Caryophyllene <trans>	2.06
45.386	Thujopsene <cis>	0.16
47.229	Humulene <alpha>	0.12
47.506	Alloaromadendrene	0.13
48.830	Germacrene D	3.93
49.707	Bicyclogermacrene	0.22
50.547	Curcumene<beta>	0.40
54.872	Caryophyllene oxide	0.07
75.934	Verbena	0.17
81.136	Verbena	0.17
81.570	Verbena	0.24
82.102	Verbena	0.31
83.064	Myrcenone dimer 1	3.07
85.487	Verbena	1.87
86.430	Verbena	0.22
87.186	Tagetone dimer 1	0.36
87.905	Verbena	0.27
88.600	Myrcenone dimer 3	0.09
89.017	Myrcenone dimer 3	5.48
89.744	Verbena	0.17
90.743	Myrcenone dimer 4	0.08
91.332	Myrcenone dimer 5	1.93
92.545	Myrcenone dimer 6	0.31
94.582	Myrcenone dimer 7	5.35
96.186	Myrcenone dimer 8	2.19
		100.00

Chromatogram Verbena C:\Users\psatyall\Google Drive\ARC-GC-4\Verbena JB JB180418B.qgd



Typical Ranges of Main Components:

Comments:
PASS