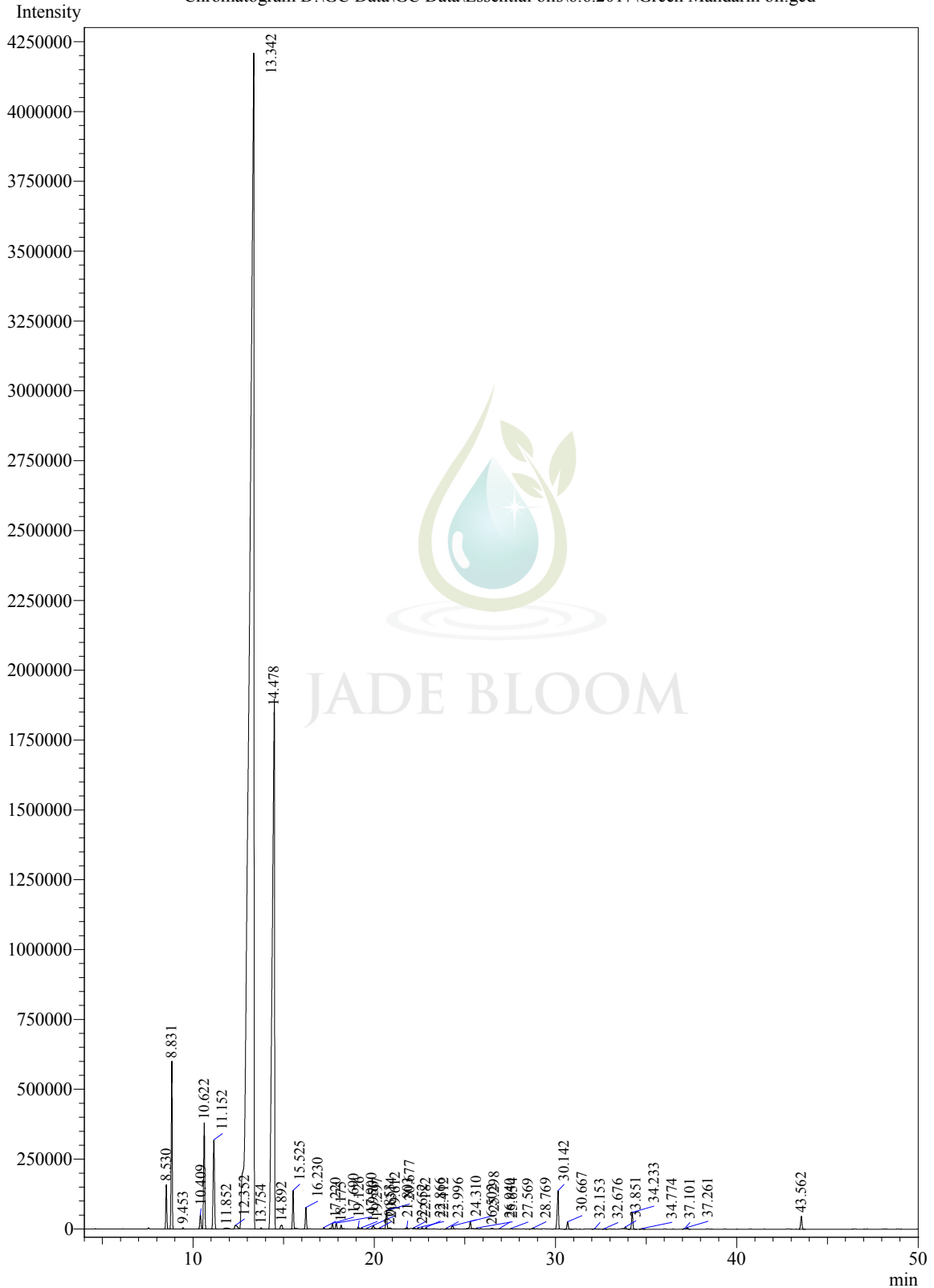


Sample Information

Analysis Date & Time: 6/7/2017 1:34:21 AM
User Name : \$Admn.\$
Sample Name : Green Mandarin oil
Sample Type : \$Organic\$
Data Name : D:\GC Data\GC Data\Essential oils\6.6.2017\Green Mandarin oil.gcd

Chromatogram D:\GC Data\GC Data\Essential oils\6.6.2017\Green Mandarin oil.gcd



Peak Table - Channel 1

Peak#	Ret.Time	Area	Area%	Name
1	8.530	601558	0.6083	Thujene alpha
2	8.831	2284827	2.3104	Alpha-pinene
3	9.453	19691	0.0199	Camphene
4	10.409	236102	0.2387	Sabinene
5	10.622	1657116	1.6756	Pinene beta
6	11.152	1665466	1.6841	Myrcene
7	11.852	56471	0.0571	Terpinene alpha
8	12.352	134514	0.1360	Para-cymene
9	13.342	71905135	72.7090	Limonene
10	13.754	18575	0.0188	beta-Ocimene
11	14.478	16645995	16.8321	gamma-Terpinene
12	14.892	101102	0.1022	1-Octanol
13	15.525	565157	0.5715	Terpinolene
14	16.230	327403	0.3311	Linalool
15	17.220	28215	0.0285	Mentha-2,8-dien-1-ol trans-para
16	17.690	104152	0.1053	Limonene oxide cis
17	17.900	93195	0.0942	Limonene oxide trans
18	18.175	61909	0.0626	Myroxide (Z)
19	19.126	33822	0.0342	Limonene monoxide
20	19.297	20077	0.0203	1-(3-Isopropenyl-2,2-dimethylcyclopropyl)-2-methyl
21	19.612	15905	0.0161	1-Nonanol
22	19.956	79989	0.0809	Terpinen-4-ol
23	20.314	18184	0.0184	m-Cymen-8-ol
24	20.677	294446	0.2977	Alpha-terpineol
25	20.853	19670	0.0199	Carveol cis
26	21.803	37231	0.0376	Carveol trans
27	22.182	20365	0.0206	Citronellol
28	22.412	18810	0.0190	Cis-carveol
29	22.652	23577	0.0238	Ascaridole
30	22.866	29670	0.0300	Carvone
31	23.996	18032	0.0182	Citral cis
32	24.310	74274	0.0751	Isogeraniol
33	25.298	126332	0.1277	Thymol
34	25.654	18767	0.0190	Isoascaridole
35	26.502	23679	0.0239	1,3-Dioxolane, 2,2-dimethyl-4,5-di-1-propenyl-
36	26.940	15150	0.0153	Cis-Sesquilandulol
37	27.569	14989	0.0152	8-p-Menthadien-1,2-diol
38	28.769	24540	0.0248	Germacrene D
39	30.142	708093	0.7160	Anthranilate methyl-, N-methyl
40	30.667	128026	0.1295	Caryophyllene (E)
41	32.153	9499	0.0096	Humulene alpha
42	32.676	7236	0.0073	Dodec-(2E)-enal
43	33.851	32314	0.0327	Alpha-selinene
44	34.233	290667	0.2939	Farnesene (E,E)-alpha
45	34.774	12136	0.0123	Cadinene delta

Peak#	Ret.Time	Area	Area%	Name
46	37.101	8153	0.0082	Spathulenol
47	37.261	30053	0.0304	Caryophyllene oxide
48	43.562	234083	0.2367	Sinensal alpha
Total		98894352	100.0000	



JADE BLOOM