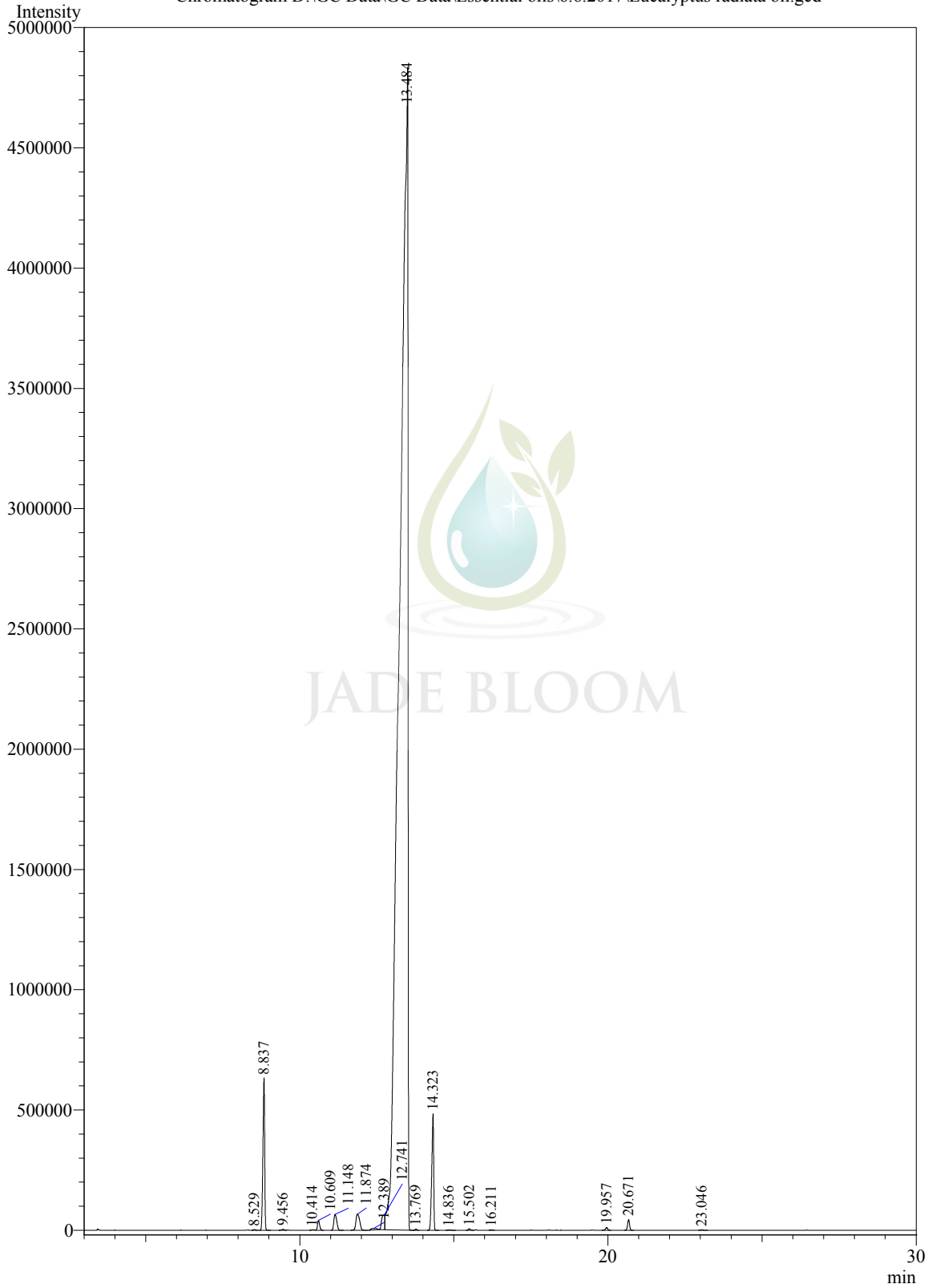


Sample Information

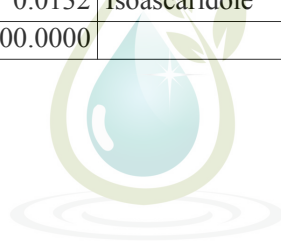
Analysis Date & Time: 6/6/2017 6:54:29 PM
User Name : \$Admn.\$
Sample Name : Eucalyptus radiata oil
Sample Type : \$Organic\$
Data Name : D:\GC Data\GC Data\Essential oils\6.6.2017\Eucalyptus radiata oil.gcd

Chromatogram D:\GC Data\GC Data\Essential oils\6.6.2017\Eucalyptus radiata oil.gcd



Peak Table - Channel 1

Peak#	Ret.Time	Area	Area%	Name
1	8.529	12227	0.0127	Alpha-thujene
2	8.837	2496296	2.5928	Alpha-pinene
3	9.456	19578	0.0203	Camphene
4	10.414	6378	0.0066	Sabinene
5	10.609	192989	0.2004	Beta-Pinene
6	11.148	435206	0.4520	Myrcene
7	11.874	569090	0.5911	Alpha-phellandrene
8	12.389	80265	0.0834	3,5-Dimethylanisole
9	12.741	418608	0.4348	Para-cymene
10	13.484	89621610	93.0861	Eucalyptol
11	13.769	17551	0.0182	Beta-Ocimene
12	14.323	2093466	2.1744	gamma-Terpinene
13	14.836	11184	0.0116	Trans-linalool oxide
14	15.502	29605	0.0307	Alpha-terpinolene
15	16.211	8691	0.0090	Linalool
16	19.957	57676	0.0599	Terpinen-4-ol
17	20.671	195075	0.2026	Alpha-terpineol
18	23.046	12684	0.0132	Isoascaridole
Total		96278179	100.0000	



JADE BLOOM