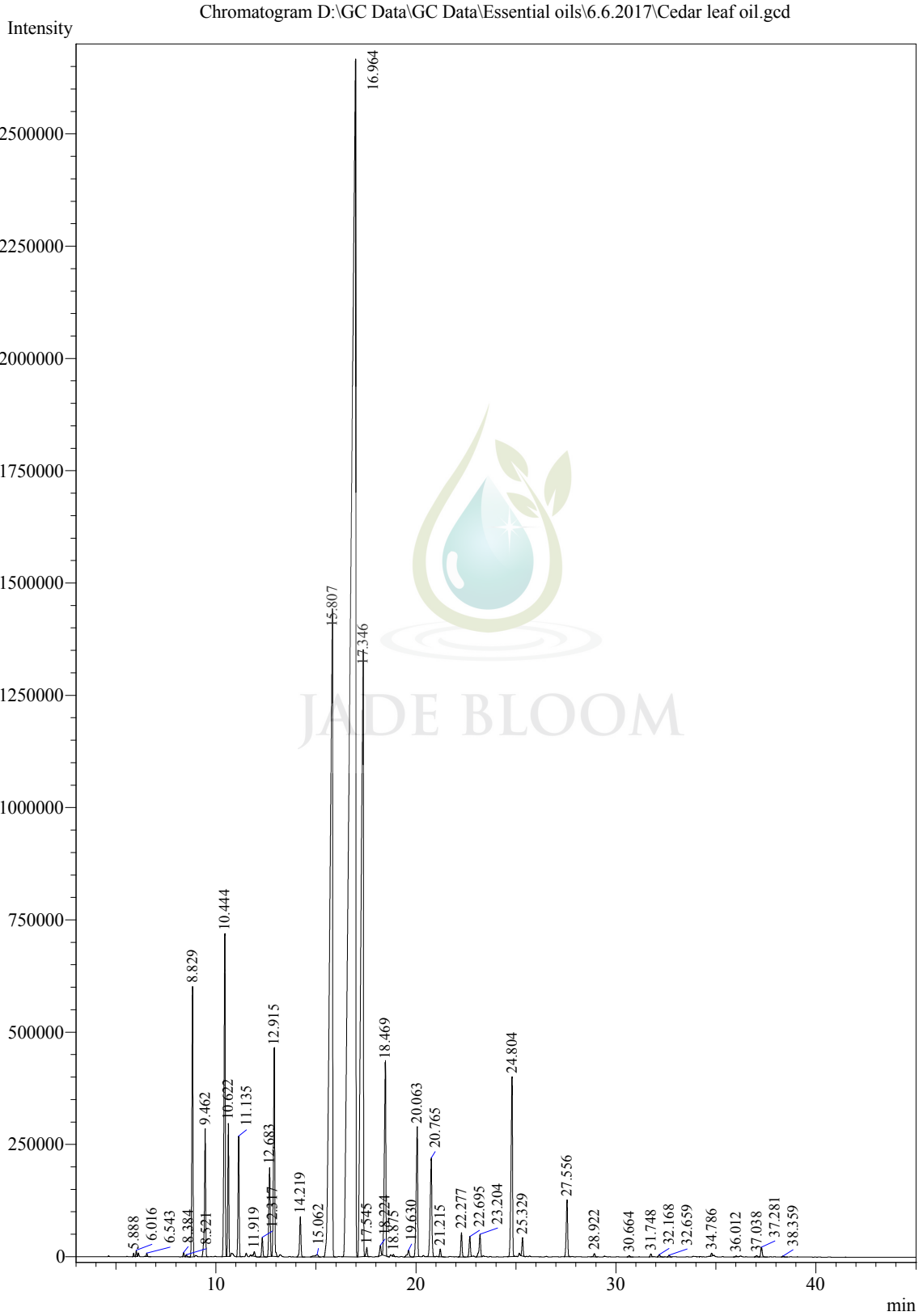


Sample Information

Analysis Date & Time: 6/6/2017 5:36:22 PM
User Name : \$Admn.\$
Sample Name : Cedar leaf oil
Sample Type : \$Organic\$
Data Name : D:\GC Data\GC Data\Essential oils\6.6.2017\Cedar leaf oil.gcd



Peak Table - Channel 1

Peak#	Ret.Time	Area	Area%	Name
1	5.888	20496	0.0219	Butyrate 2-methyl-, ethyl
2	6.016	38436	0.0410	Valerate ethyl
3	6.543	25943	0.0277	Hexanol <n->
4	8.384	31823	0.0340	Tricyclene
5	8.521	16357	0.0175	Thujene alpha
6	8.829	2231049	2.3811	Pinene alpha
7	9.462	1155238	1.2329	Camphene
8	10.444	3085477	3.2930	Sabinene
9	10.622	1035676	1.1053	Pinene beta
10	11.135	1031997	1.1014	Myrcene
11	11.919	54146	0.0578	o-Cresol methyl ether
12	12.317	179553	0.1916	Terpinene alpha
13	12.683	907209	0.9682	Cymene para
14	12.915	2039230	2.1764	Limonene
15	14.219	415147	0.4431	Terpinene gamma
16	15.062	62621	0.0668	Sabinene hydrate trans
17	15.807	13630466	14.5470	Fenchone
18	16.964	47136277	50.3058	Beta-Thujone
19	17.346	11291950	12.0512	Alpha-Thujone
20	17.545	84394	0.0901	Campholenal alpha
21	18.224	112968	0.1206	Cis-Sabinol
22	18.469	2244943	2.3959	Camphor
23	18.875	15302	0.0163	Sabina ketone
24	19.630	102165	0.1090	Borneol
25	20.063	1493442	1.5939	Terpinen-4-ol
26	20.765	1267157	1.3524	Alpha-terpineol
27	21.215	75523	0.0806	Verbenone
28	22.277	239275	0.2554	Carvacrol methyl ether
29	22.695	200030	0.2135	Anisole, 5-isopropyl-2-methyl
30	23.204	260970	0.2785	Linalyl acetate
31	24.804	2106436	2.2481	Bornyl acetate
32	25.329	173413	0.1851	Thymol
33	27.556	620542	0.6623	Alpha-terpinyl acetate
34	28.922	36696	0.0392	Neryl acetate
35	30.664	16097	0.0172	Caryophyllene (E)
36	31.748	31904	0.0340	Cinnamyl acetate (E)
37	32.168	28353	0.0303	Humulene alpha
38	32.659	18491	0.0197	Cinnamate ethyl-(Z)
39	34.786	26849	0.0287	Cadinene delta
40	36.012	12862	0.0137	Caryophyllene oxide
41	37.038	16553	0.0177	Caryolan-8-ol
42	37.281	112312	0.1199	Caryophyllene oxide
43	38.359	13648	0.0146	Humulene oxide II
Total		93699416	100.0000	