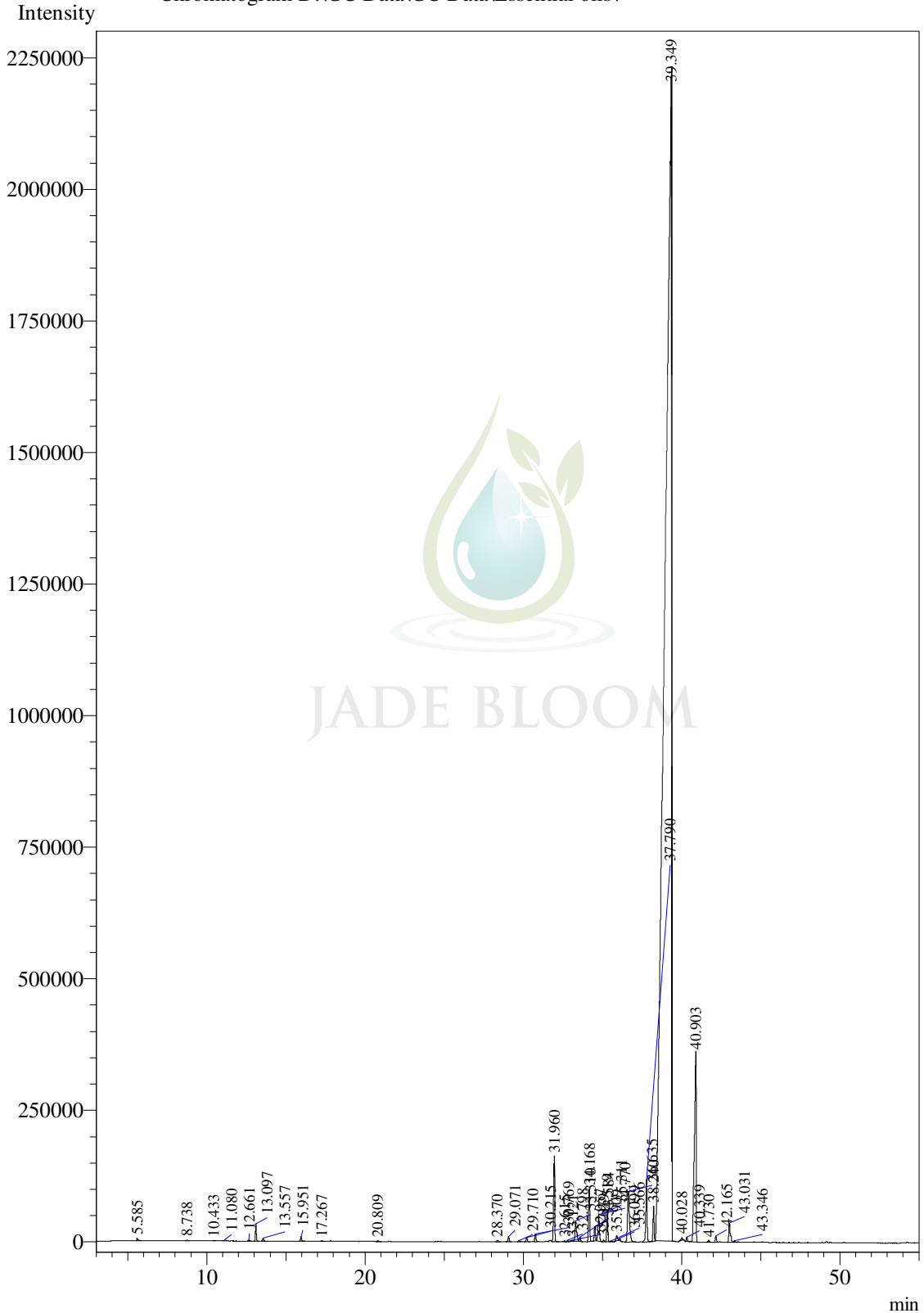


Sample Information

Analysis Date & Time : 4/25/2017 12:26:57 PM
User Name : \$Admn.\$
Sample Name : Calamus oil
Sample Type : \$Organic\$
Data Name : D:\GC Data\GC Data\Essential oils\

Chromatogram D:\GC Data\GC Data\Essential oils\



Peak Table - Channel 1

Peak#	Ret.Time	Area	Area%	Name
1	5.585	26201	0.0353	Furfural
2	8.738	7369	0.0099	Alpha-pinene
3	10.433	2599	0.0035	Furfural 5-methyl
4	11.080	4478	0.0060	Beta-pinene
5	12.661	9819	0.0132	Limonene
6	13.097	134545	0.1812	Trans-beta-ocimene
7	13.557	24175	0.0326	Cis-beta-ocimene
8	15.951	37893	0.0510	Linalool
9	17.267	5815	0.0078	Neo-allo-ocimene
10	20.809	9633	0.0130	Decanal n
11	28.370	16916	0.0228	Alpha-Copaene
12	29.071	51170	0.0689	Beta-elemene
13	29.710	9785	0.0132	Methyl eugenol
14	30.215	48282	0.0650	Aristolene
15	30.769	71160	0.0959	Calarene
16	31.960	803922	1.0829	Isoeugenol methyl-(Z)
17	32.615	6186	0.0083	Alpha-amorphene
18	32.798	13593	0.0183	Germacrene D
19	32.957	8571	0.0115	5,8,11-Heptadecatrien-1-ol
20	33.121	8532	0.0115	Epiglobulol
21	33.310	261002	0.3516	Shyobunone
22	33.584	39525	0.0532	Viridiflorene
23	34.168	514263	0.6928	6-Epishyobunone
24	34.519	132316	0.1782	Cadinene delta
25	34.770	319422	0.4303	9-Cedranone
26	35.079	17503	0.0236	Dehydroaromadendrene
27	35.311	283037	0.3813	Calacorene alpha
28	35.566	11829	0.0159	Elemol
29	35.909	65729	0.0885	Elemicin
30	36.099	16394	0.0221	Calacorene beta
31	36.635	798279	1.0753	Isoelemicin (Z)
32	37.790	657243	0.8854	Isoshyobunone
33	38.240	324730	0.4374	Trans-Calamenene
34	39.349	66243636	89.2351	Cis-Asarone
35	40.028	33484	0.0451	3,4-Dimethoxypropiophenone
36	40.339	43074	0.0580	Beta-oplophenone
37	40.903	2828595	3.8103	Trans-Asarone
38	41.730	24060	0.0324	Cuparene
39	42.165	61669	0.0831	Asarylaldehyde
40	43.031	245658	0.3309	Isocalamendiol
41	43.346	12892	0.0174	Eudesm-11-en-4-alpha,6-alpha-diol
Total		74234984	100.0000	