

Sample Information

Analysis Date & Time: 3/28/2017 10:37:28 PM

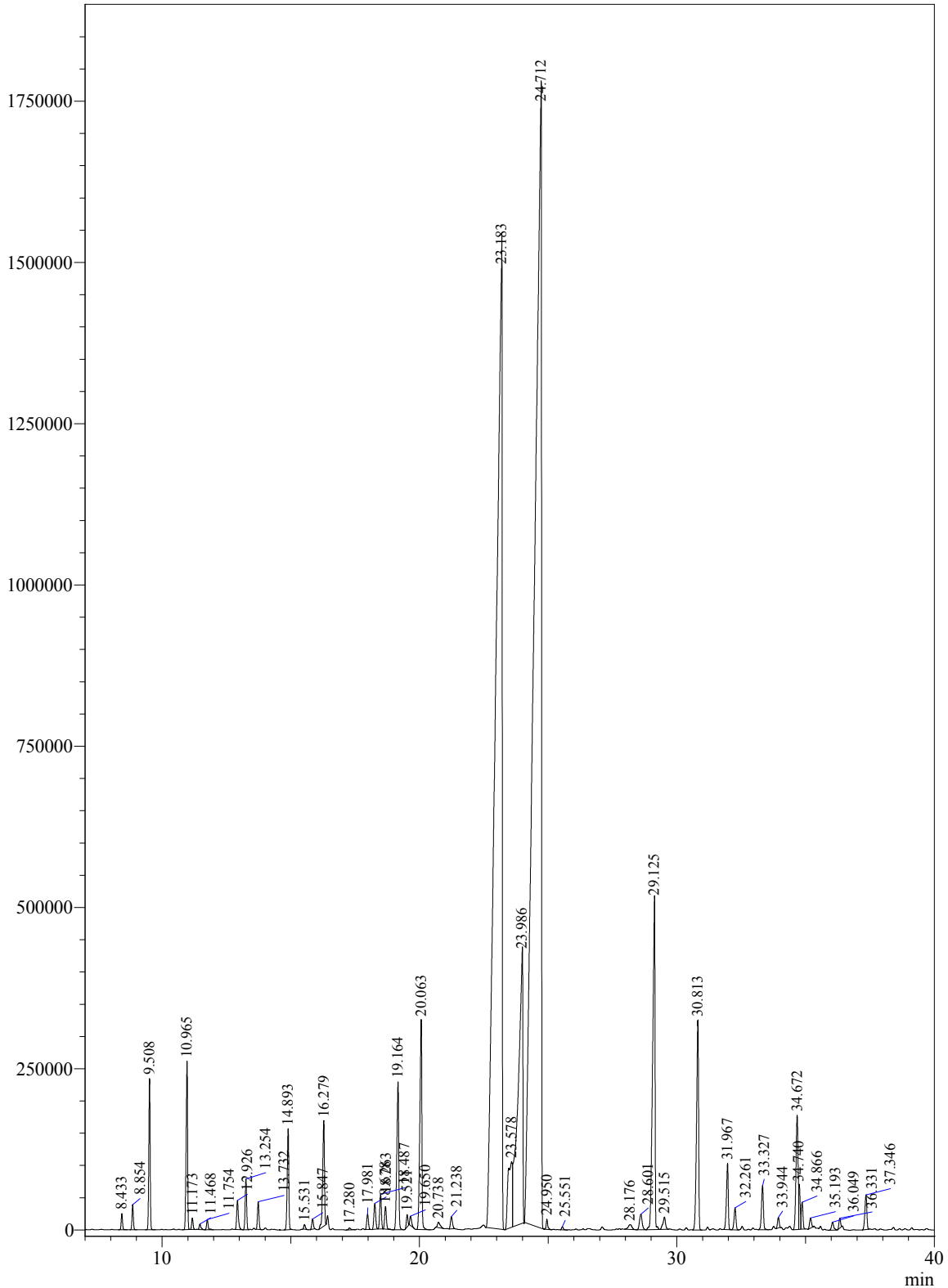
User Name : \$Admn.\$

Sample Name : Lemon grass oil-HBNO-1122-2017(INV-817)

Sample Type : \$Organic\$

Data Name : D:\GC Data\GC Data\Essential oils\28.3.2017\Lemon grass oil-HBNO-1122-2017(INV-817).gcd

Chromatogram D:\GC Data\GC Data\Essential oils\28.3.2017\Lemon grass oil-HBNO-1122-2017(INV-817).gcd



Peak Table - Channel 1

Peak#	Ret.Time	Area	Area%	Name
1	8.433	88665	0.1045	Tricyclene
2	8.854	137966	0.1627	Alpha-thujene
3	9.508	851599	1.0041	Camphene
4	10.965	1032292	1.2172	6-Methylhept-6-en-2-one
5	11.173	69229	0.0816	Myrcene
6	11.468	41885	0.0494	4-Hexen-1-ol
7	11.754	66624	0.0786	Octanal
8	12.926	211590	0.2495	Limonene
9	13.254	309551	0.3650	Trans-beta-ocimene
10	13.732	174897	0.2062	Cis-beta-ocimene
11	14.893	671217	0.7914	Pentyl propyl ketone
12	15.531	31730	0.0374	2-methoxy mesitylene
13	15.847	68903	0.0812	3-Methyl sulfonyl-3-methylbutan-1-ol
14	16.279	790481	0.9320	Linalool
15	17.280	19039	0.0224	1,8-Nonadien-4-ol
16	17.981	111602	0.1316	Epiphotocitral A
17	18.263	196931	0.2322	Methacrylic anhydride
18	18.487	240415	0.2835	Trans-chrysanthemal
19	18.678	166192	0.1960	2,9-Dimethyl-5-methylidendec-9-en-4-ol
20	19.164	1193335	1.4070	Isogeranial
21	19.521	78571	0.0926	Rose furan epoxide
22	19.650	68728	0.0810	4-Pyridazinamine
23	20.063	1774571	2.0924	Isoneral
24	20.738	60800	0.0717	1-Germa-2-silbutane
25	21.238	101394	0.1196	Oxalic acid, butyl propyl ester
26	23.183	26600903	31.3645	Neral/Citral b
27	23.578	1229290	1.4494	3-Methyl-3-nitrobutyronitrile
28	23.986	5396888	6.3633	Geraniol
29	24.712	34411731	40.5740	Geranial/Citral a
30	24.950	65393	0.0771	1,7-Nonadien-4-ol, 4,8-dimethyl
31	25.551	22515	0.0265	2,6-Dimethyl hepta-1,5-diene-5,5-dicarbonitrile
32	28.176	77461	0.0913	Valencene
33	28.601	167720	0.1978	Methacryloyl cyanide
34	29.125	3314782	3.9084	Geranyl acetate
35	29.515	133454	0.1574	Beta-elemene
36	30.813	1795156	2.1166	Caryophyllene (E)
37	31.967	494435	0.5830	cis-Isoeugenol
38	32.261	173149	0.2042	Humulene alpha
39	33.327	350291	0.4130	Germacrene D
40	33.944	71905	0.0848	Tau-cadinol
41	34.672	1019318	1.2019	Cadinene gamma
42	34.740	237935	0.2805	Cubebol10-epi
43	34.866	185690	0.2189	Cadinene delta
44	35.193	80816	0.0953	(E)-gamma-Bisabolene
45	36.049	71310	0.0841	Delta-terpineol

Peak#	Ret.Time	Area	Area%	Name
46	36.331	68499	0.0808	Geranyl isobutyrate
47	37.346	285343	0.3364	Caryophyllene oxide
Total		84812191	100.0000	