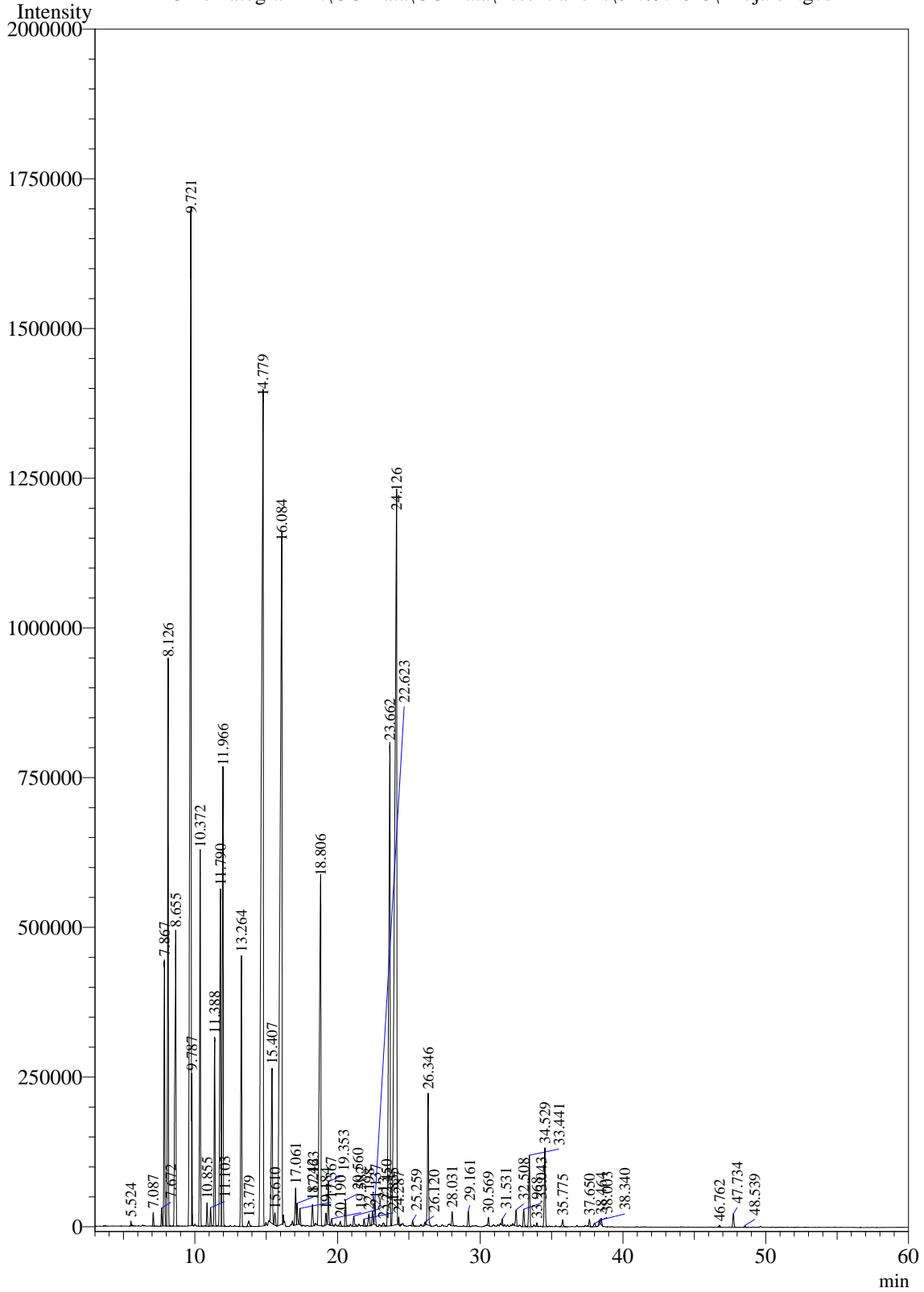


Sample Information

Analysis Date & Time : 9/2/2015 10:06:27 PM
User Name : \$Admn.\$
Sample Name : Thuja oil
Sample Type : \$Organic\$
Data Name : D:\GC Data\GC Data\Essential oils\02.09.2015\Thuja oil.gcd

Chromatogram D:\GC Data\GC Data\Essential oils\02.09.2015\Thuja oil.gcd



Peak Table - Channel 1

Peak#	Ret.Time	Area	Area%	Name
1	5.524	32412	0.0378	Butyrate 2-methyl-ethyl
2	7.087	80022	0.0933	Bicyclo[2.2.1]heptane, 7,7-dimethyl-2-methyl-
3	7.672	111593	0.1301	Tricyclene
4	7.867	1747829	2.0379	Thujene alpha
5	8.126	3664410	4.2726	Alpha-pinene
6	8.655	2727680	3.1804	Camphene
7	9.721	10531645	12.2797	Sabinene
8	9.787	507607	0.5919	Pinene beta
9	10.372	2573919	3.0011	Myrcene
10	10.855	156757	0.1828	Phellandrene alpha
11	11.103	120825	0.1409	Delta-3-carene
12	11.388	1304291	1.5208	Terpinene alpha
13	11.790	2933382	3.4203	Cymene para
14	11.966	3497686	4.0782	Limonene
15	13.264	2013013	2.3471	Terpinene gamma
16	13.779	75764	0.0883	4-Thujanol
17	14.779	13255206	15.4553	Beta-camphor
18	15.407	1516052	1.7677	Beta-Thujone
19	15.610	107886	0.1258	Hotrienol
20	16.084	10721443	12.5010	Alpha-Thujone
21	17.061	306379	0.3572	Sabinol trans
22	17.163	161594	0.1884	Camphor
23	17.367	109409	0.1276	Camphene hydrate
24	18.242	196503	0.2291	Borneol
25	18.806	4255221	4.9615	Terpinen-4-ol
26	19.184	94023	0.1096	Para-cymen-8-ol
27	19.353	309612	0.3610	Alpha-terpineol
28	19.582	60271	0.0703	Methyl 4-ethyl-2-methyl-4-pentenoate
29	20.190	47611	0.0555	Verbenone
30	20.560	209188	0.2439	Fenchyl acetate
31	21.137	109663	0.1279	Citronellol
32	21.855	53907	0.0629	Carvotanacetone
33	22.198	124679	0.1454	Linalyl acetate
34	22.450	110411	0.1287	Citronellate methyl
35	22.623	189782	0.2213	Thujyl acetate
36	23.213	42773	0.0499	1,4-dihydroxy-p-menth-2-ene
37	23.662	5653699	6.5921	Alpha-fenchyl acetate/Bornyl acetate
38	24.126	12426904	14.4896	Sabinol
39	24.287	43018	0.0502	Terpin-1-en-4-yl acetate
40	25.259	41741	0.0487	1,3-Dioxolane, 2,2-dimethyl-4,5-di-1-propeny-
41	26.120	27175	0.0317	5-Oxobicyclo[2.2.1]heptane, 2-hydroxy-1,7,7-
42	26.346	1113922	1.2988	Alpha-terpinyl acetate
43	28.031	113543	0.1324	Beta-elemene
44	29.161	128029	0.1493	Caryophyllene (E)
45	30.569	65944	0.0769	Humulene alpha

Peak#	Ret.Time	Area	Area%	Name
46	31.531	39159	0.0457	Muurolene gamma
47	32.508	143871	0.1678	Muurolene alpha
48	33.043	154146	0.1797	Cadinene gamma
49	33.441	619433	0.7222	Cadinene delta
50	33.968	28151	0.0328	Cadinene alpha
51	34.529	677028	0.7894	Elemol
52	35.775	74756	0.0872	Caryophyllene oxide
53	37.650	63979	0.0746	Eudesmol gamma
54	38.003	43956	0.0513	T-Muurolol
55	38.340	31470	0.0367	Beta-eudesmol
56	38.464	53608	0.0625	Eudesmol alpha
57	46.762	19551	0.0228	Rimuene
58	47.734	125136	0.1459	Beyerene
59	48.539	15866	0.0185	Camphorene m
Total		85764533	100.0000	