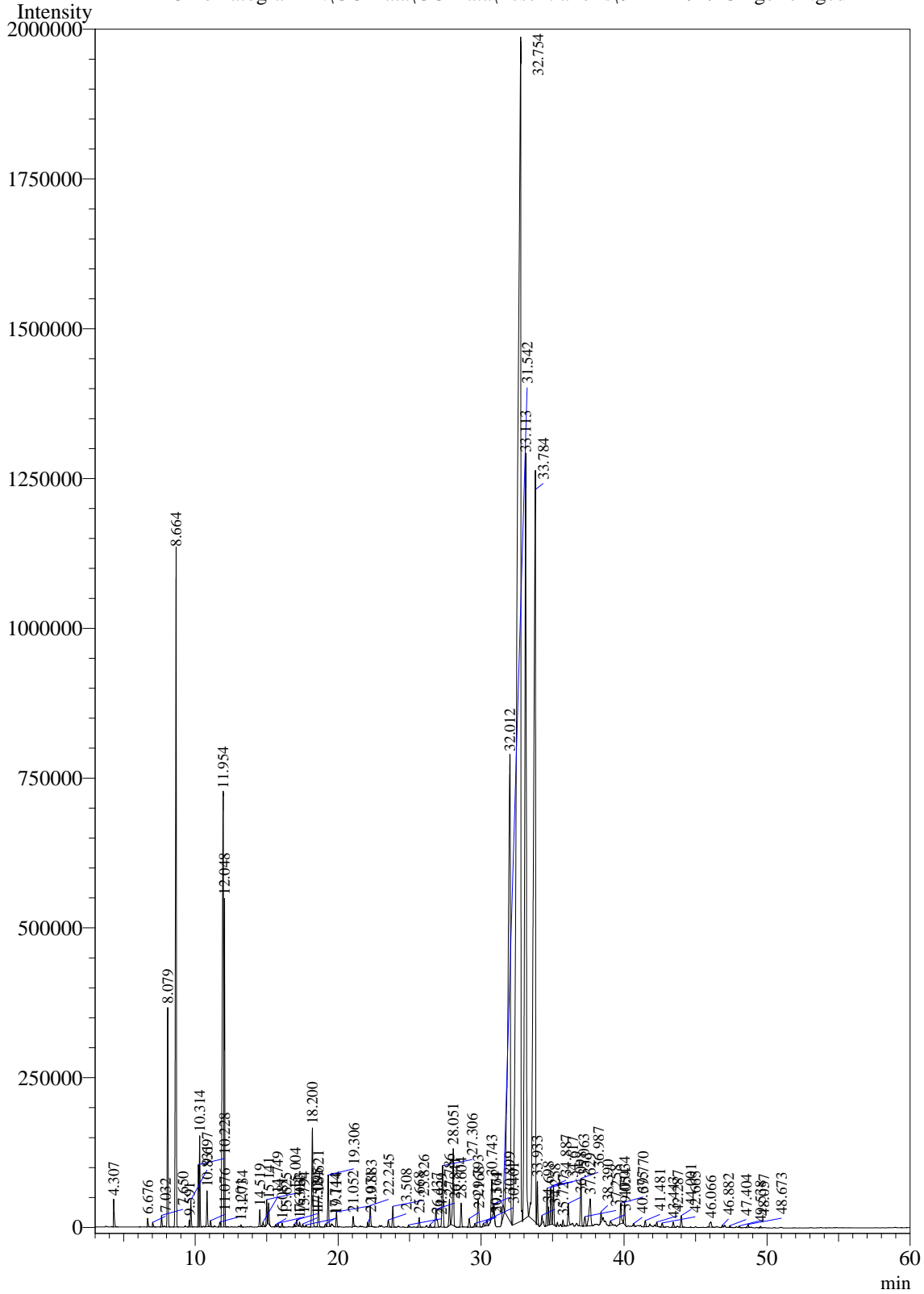


Sample Information

Analysis Date & Time : 01/24/2017
User Name : \$Admn.\$
Sample Name : Ginger oil
Sample Type : \$Organic\$
Data Name : D:\GC Data\GC Data\Essential oils\01/24/2017\Ginger oil.gcd

Chromatogram D:\GC Data\GC Data\Essential oils\01/24/2017\Ginger oil.gcd



Peak Table - Channel 1

Peak#	Ret.Time	Area	Area%	Name
1	4.307	171189	0.1959	Hexanal
2	6.676	51569	0.0590	2-Heptanone
3	7.032	31317	0.0358	Heptan-2-ol
4	7.650	72644	0.0831	Alpha-thujene
5	8.079	1373398	1.5716	Alpha-Pinene
6	8.664	4857181	5.5583	camphene
7	9.591	44386	0.0508	Sabinene
8	9.697	172613	0.1975	Pinene beta
9	10.228	425783	0.4872	6-Methylhept-6-en-2-one
10	10.314	543427	0.6219	Myrcene
11	10.831	250003	0.2861	Phellandrene alpha
12	11.076	41782	0.0478	2-Hexenal, 2-ethyl
13	11.734	46319	0.0530	Cymene para
14	11.954	4465989	5.1107	Phellandrene beta
15	12.048	2056576	2.3534	Eucalyptol
16	13.201	14460	0.0165	Terpinene gamma
17	14.519	120857	0.1383	Alpha-terpinolene
18	14.749	38704	0.0443	2-Nonanone
19	15.004	164642	0.1884	Ocimenone trans
20	15.141	149018	0.1705	Linalool
21	15.625	14835	0.0170	Isobornyl alcohol
22	15.794	29043	0.0332	Nona-1,3,7-triene 4,8-dimethyl-(E)
23	16.081	32373	0.0370	Trans-Pinene hydrate
24	16.933	19829	0.0227	Non-3-en-2-one
25	17.095	50208	0.0575	Camphor
26	17.304	28415	0.0325	Camphene hydrate
27	17.524	22049	0.0252	Citronellal
28	17.744	12745	0.0146	Isoborneol
29	18.200	835939	0.9566	Borneol
30	18.621	238325	0.2727	Rose furan oxide
31	19.114	25809	0.0295	Heptanedinitrile, 4-acetyl-4-methyl-
32	19.306	389955	0.4462	Alpha-terpineol
33	19.883	112216	0.1284	Decanal
34	21.052	77345	0.0885	Citronellol
35	22.071	30998	0.0355	Mentha-2,8-dien-1-ol cis-para
36	22.245	163210	0.1868	Geraniol
37	23.508	63854	0.0731	Bornyl acetate
38	23.826	160678	0.1839	2-Undecanone
39	24.929	16144	0.0185	Guaiacol 4-vinyl
40	25.668	84036	0.0962	Elemene delta
41	26.437	23628	0.0270	Citronellyl acetate
42	26.841	211602	0.2421	Cyclosativene
43	27.306	621397	0.7111	Copaene alpha
44	27.786	203645	0.2330	Geranyl acetate
45	28.051	691199	0.7910	Beta-Elemene

Peak#	Ret.Time	Area	Area%	Name
46	28.604	204943	0.2345	Funebrene alpha
47	29.168	79260	0.0907	Caryophyllene (E)
48	29.571	33720	0.0386	Beta-coepene
49	29.793	315939	0.3615	gamma-Elemene
50	30.164	28695	0.0328	Sesquisabinene
51	30.401	52995	0.0606	Selinene alpha
52	30.743	360946	0.4130	Bergamotene beta-trans
53	30.899	71525	0.0818	Caryophyllene 9-epi-(E)
54	31.542	170491	0.1951	Selina-4,11-diene
55	32.012	8822007	10.0955	Alpha-curcumene
56	32.754	32665568	37.3809	Alpha-Funebrene/alpha-Zingiberene
57	33.113	9730992	11.1357	Alpha-farnesene
58	33.784	12080917	13.8248	Sesquisabinene
59	33.933	274588	0.3142	Bisabolene (E)-gamma
60	34.258	61186	0.0700	Copaen-4-alfa-ol beta
61	34.617	299852	0.3431	Elemol
62	34.698	143923	0.1647	Sesquisabinene hydrate cis
63	34.887	273719	0.3132	Germacrene B
64	35.063	319876	0.3661	Nerolidol (E)
65	35.727	58249	0.0667	Tumerol ar
66	36.098	189599	0.2170	Sesquisabinene hydrate trans
67	36.987	406100	0.4647	Zingiberenol
68	37.258	103300	0.1182	Eudesmol epi-gamma
69	37.629	406962	0.4657	7-epi-cis-sesquisabinene hydrate
70	38.390	75538	0.0864	beta-Eudesmol
71	39.054	54714	0.0626	Bisabolol epi-beta
72	39.770	196426	0.2248	Shyobunol
73	40.034	175189	0.2005	Camphorene
74	40.675	21358	0.0244	Cedroxyde
75	41.481	56913	0.0651	Mintsulfide
76	42.287	33153	0.0379	Hexadec-(8Z)-enal 14-methyl
77	42.665	39556	0.0453	Z-7-Hexadecenal
78	43.443	49643	0.0568	Labd-(13E)-8,15-diol
79	44.001	101432	0.1161	2,5,5,8a-Tetramethyl-4-methylene-6,7,8,8a-tet
80	46.066	80083	0.0916	Cedr-8(15)-en-10-ol
81	46.882	16517	0.0189	Spiro[4.5]decan-7-one, 1,8-dimethyl-8,9-epoxy
82	47.404	17826	0.0204	Ethyl (7,7-dimethyl-1-oxo-2,3,4,5,6,7-hexahydro
83	48.057	13608	0.0156	Camphorene-p
84	48.673	34247	0.0392	geranyl-p-cymene
85	49.538	12869	0.0147	Cis-Lanceol acetate
Total		87385758	100.0000	