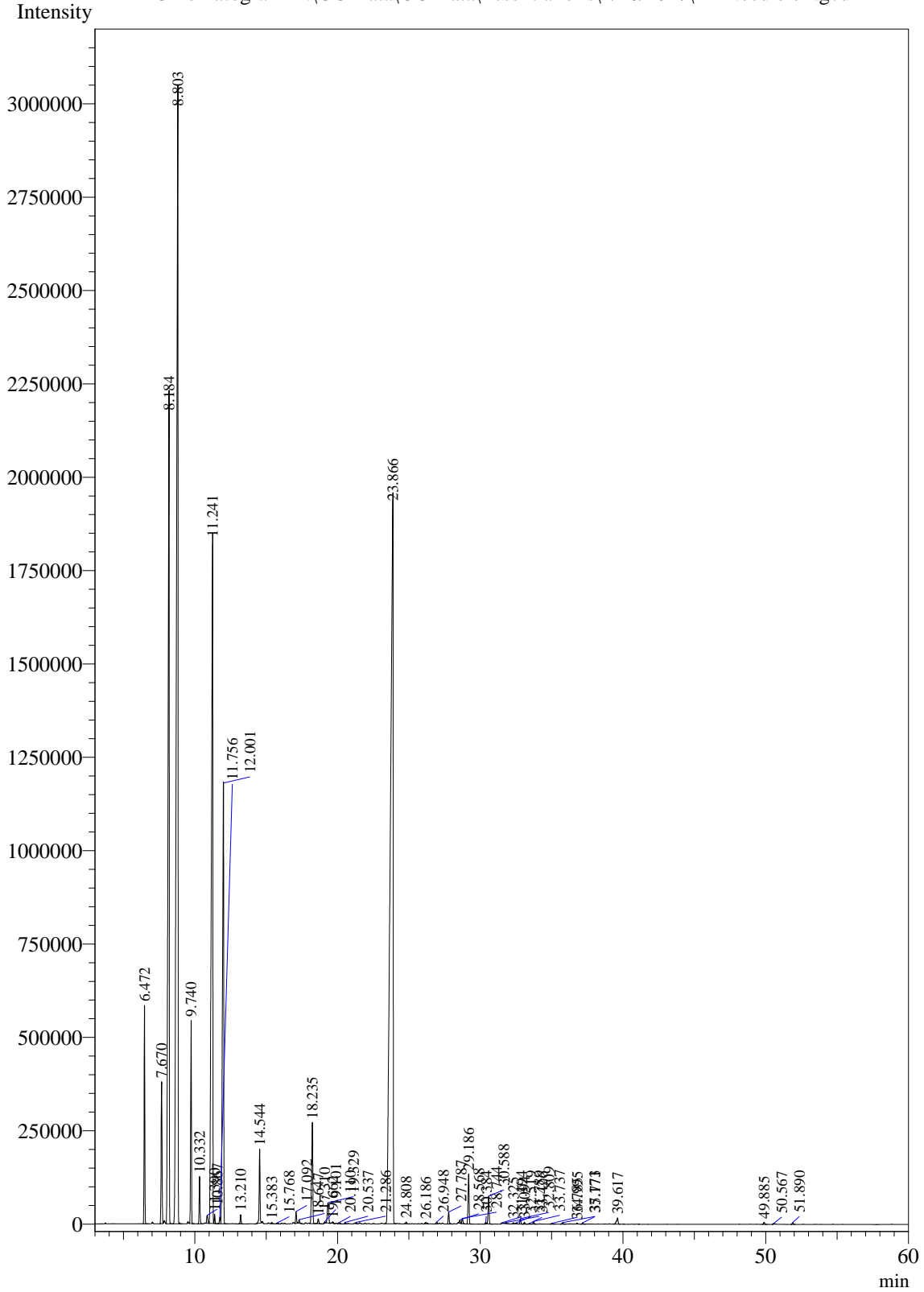


Sample Information

Analysis Date & Time : 1/16/2017
User Name : \$Admn.\$
Sample Name : Fir Needle oil
Sample Type : \$Organic\$
Data Name : D:\GC Data\GC Data\Essential oils\1/16/2017\Fir Needle oil.gcd

Chromatogram D:\GC Data\GC Data\Essential oils\1/16/2017\Fir Needle oil.gcd



Peak Table - Channel 1

Peak#	Ret.Time	Area	Area%	Name
1	6.472	1995361	2.0972	Santene
2	7.670	1717144	1.8048	Alpha-thujene
3	8.184	13157588	13.8292	Alpha-Pinene
4	8.803	23412087	24.6071	Camphene
5	9.740	2075403	2.1813	Beta-Pinene
6	10.332	513035	0.5392	Myrcene
7	10.867	126204	0.1326	Alpha-Phellandrene
8	11.241	13201632	13.8755	Delta-3-carene
9	11.390	83859	0.0881	Alpha-Terpinene
10	11.756	91901	0.0966	Para-Cymene
11	12.001	7089740	7.4516	Limonene
12	13.210	101153	0.1063	Gamma-Terpinene
13	14.544	845717	0.8889	Alpha-terpinolene
14	15.383	16309	0.0171	Fenchol
15	15.768	12984	0.0136	Alpha-Campholenal
16	17.092	138987	0.1461	Camphor
17	17.310	44178	0.0464	Camphene hydrate
18	18.235	1568006	1.6480	Borneol
19	18.647	60258	0.0633	Terpinen-4-ol
20	19.101	17187	0.0181	Cryptone
21	19.329	369348	0.3882	Alpha-terpineol
22	19.662	22782	0.0239	Gamma-Terpineol
23	20.110	25738	0.0271	Verbenone
24	20.537	18674	0.0196	Fenchyl acetate
25	21.286	14392	0.0151	Thymyl methyl ether
26	23.866	26535846	27.8903	Bornyl acetate
27	24.808	25806	0.0271	Menthyl acetate
28	26.186	32997	0.0347	Alpha-longipinene
29	26.948	28114	0.0295	Neryl acetate
30	27.787	157471	0.1655	Geranyl acetate
31	28.568	38054	0.0400	Longifolene
32	28.744	72528	0.0762	Dodecanal
33	29.186	676222	0.7107	Trans-Caryophyllene
34	30.384	21346	0.0224	Alpha-Himachalene
35	30.588	372429	0.3914	Alpha-Humulene
36	31.494	9334	0.0098	1-Undecanol
37	31.789	16670	0.0175	Tetradec-(7Z)-en-2-one
38	32.325	20843	0.0219	Alpha-Alaskene
39	32.519	15975	0.0168	Trans-Cadina-1,4-diene
40	32.809	72976	0.0767	Beta-Bisabolene
41	33.094	27124	0.0285	Bisabolene (Z)-gamma
42	33.426	7935	0.0083	Cadinene delta
43	33.737	35569	0.0374	Bisabolene (E)-gamma
44	34.995	9985	0.0105	Nerolidol
45	35.771	24151	0.0254	Caryophyllene oxide

Peak#	Ret.Time	Area	Area%	Name
46	36.785	8254	0.0087	Humulene oxide
47	37.173	17889	0.0188	Selina-6-en-4-ol
48	39.617	128230	0.1348	Alpha-bisabolol
49	49.885	29317	0.0308	Manoyl oxide 13-epi
50	50.567	12797	0.0134	Manool oxide
51	51.890	26175	0.0275	Manool
Total		95143704	100.0000	

Due to high volume sales, this GCMS is not lot specific. It is however, representative of the same quality of oil being offered. Natural variances may occur from lot to lot which is normal for natural products.