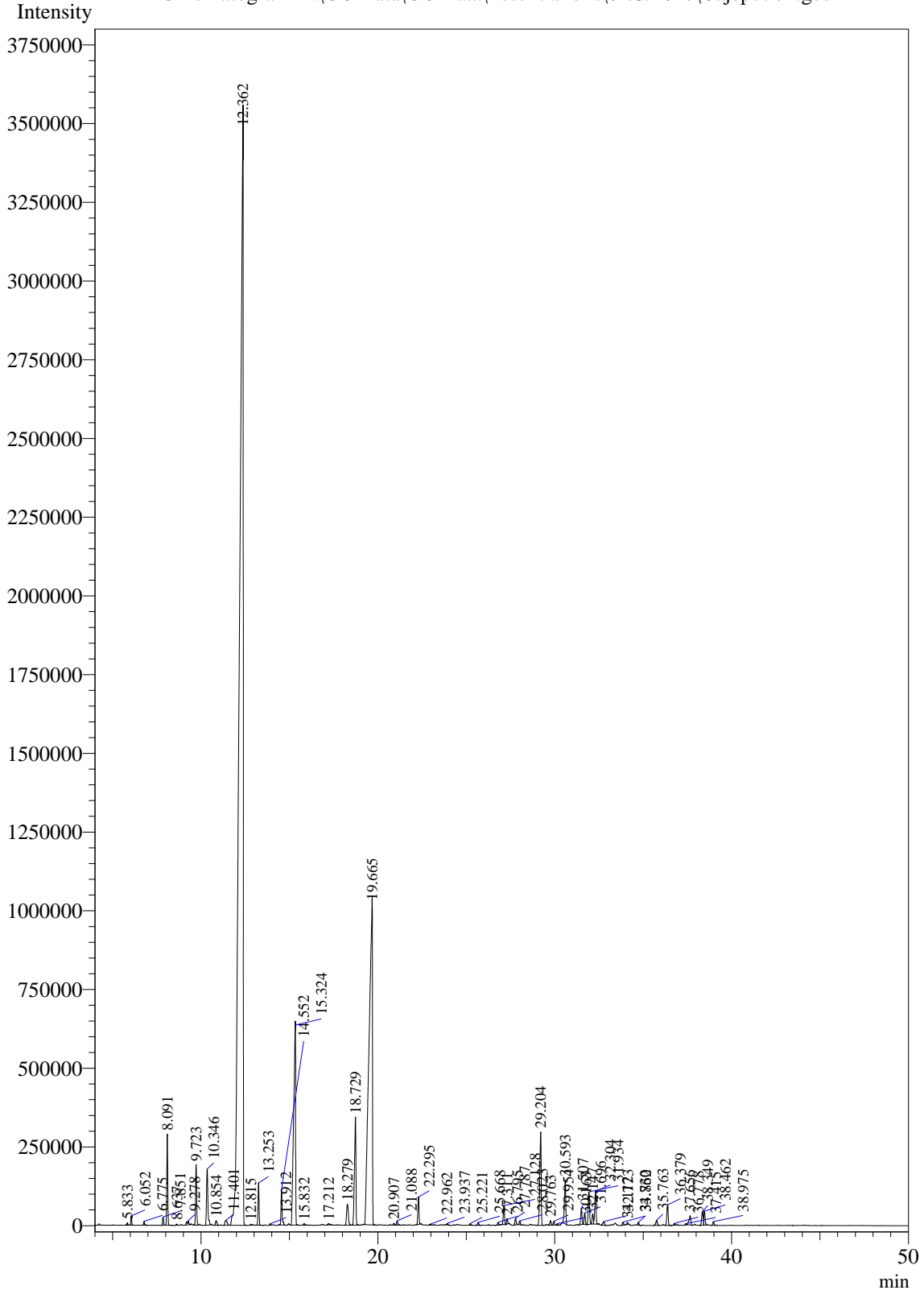


Sample Information

Analysis Date & Time : 01/3/2017
User Name : \$Admn.\$
Sample Name : Cajeput oil
Sample Type : \$Organic\$
Data Name : D:\GC Data\GC Data\Essential oils\01/3/2017\Cajeput oil.gcd

Chromatogram D:\GC Data\GC Data\Essential oils\01/3/2017\Cajeput oil.gcd



Peak Table - Channel 1

Peak#	Ret.Time	Area	Area%	Name
1	5.833	30523	0.0371	Ethyl benzene
2	6.052	103033	0.1251	o-Xylene
3	6.775	51573	0.0626	3-Xylene
4	7.851	100781	0.1224	Thujene alpha
5	8.091	1066214	1.2949	Alpha-pinene
6	8.637	19737	0.0240	Camphene
7	9.278	95804	0.1163	m-Methylethylbenzene
8	9.723	805201	0.9779	Pinene beta
9	10.346	938104	1.1393	Myrcene
10	10.854	85730	0.1041	Phellandrene beta
11	11.401	133791	0.1625	Terpinene alpha
12	12.362	49862523	60.5558	Eucalyptol
13	12.815	11144	0.0135	beta-Ocimene
14	13.253	524511	0.6370	Terpinene gamma
15	13.912	17585	0.0214	Trans-Linalool oxide
16	14.552	493191	0.5990	Terpinolene
17	15.324	4959930	6.0236	Linalool
18	15.832	24013	0.0292	Fenchol
19	17.212	26801	0.0325	Isopulegol
20	18.279	459522	0.5581	Terpineol delta
21	18.729	1934298	2.3491	Terpinen-4-ol
22	19.665	13840620	16.8088	Alpha-Terpineol
23	20.907	29129	0.0354	2-Hydroxy-1,8-cineole
24	21.088	67548	0.0820	Nerol
25	22.295	390152	0.4738	Geraniol
26	22.962	18717	0.0227	1,4-dihydroxy-p-menth-2-ene
27	23.937	21981	0.0267	Tridecane n
28	25.221	27963	0.0340	Geranic acid methyl-ester
29	25.668	47783	0.0580	Elemene delta
30	26.795	39008	0.0474	Cis-Isoeugenol
31	27.128	284680	0.3457	Ylangene
32	27.311	71773	0.0872	Copaene alpha
33	27.787	105835	0.1285	Geranyl acetate
34	28.023	56967	0.0692	Beta-elemene
35	29.204	1643388	1.9958	Caryophyllene (E)
36	29.763	76748	0.0932	gamma-Elemene
37	29.954	60081	0.0730	Alpha-Guaiene
38	30.163	26463	0.0321	Guaia-6,9-diene
39	30.593	721396	0.8761	Humulene alpha
40	31.507	241354	0.2931	Maaliene gamma
41	31.696	171976	0.2089	Alpha-amoprphene
42	31.934	540046	0.6559	Selinene beta
43	32.147	150111	0.1823	beta-Cadinene
44	32.304	538218	0.6536	Selinene alpha
45	32.773	76909	0.0934	Amorphene delta

Peak#	Ret.Time	Area	Area%	Name
46	33.862	46535	0.0565	Maaliene gamma
47	34.112	25703	0.0312	Selina-3,7(11)-diene
48	34.730	45760	0.0556	Germacrene B
49	35.763	99789	0.1212	Caryophyllene oxide
50	36.379	340821	0.4139	Guaiol
51	36.778	33170	0.0403	Humulene epoxide II
52	37.415	19195	0.0233	Globulol
53	37.656	201955	0.2453	Eudesmol gamma
54	38.349	255701	0.3105	Beta-eudesmol
55	38.462	215998	0.2623	alpha-Eudesmol
56	38.975	64036	0.0778	Bulnesol
Total		82341518	100.0000	

Due to high volume sales, this GCMS is not lot specific. It is however, representative of the same quality of oil being offered. Natural variances may occur from lot to lot which is normal for natural products.