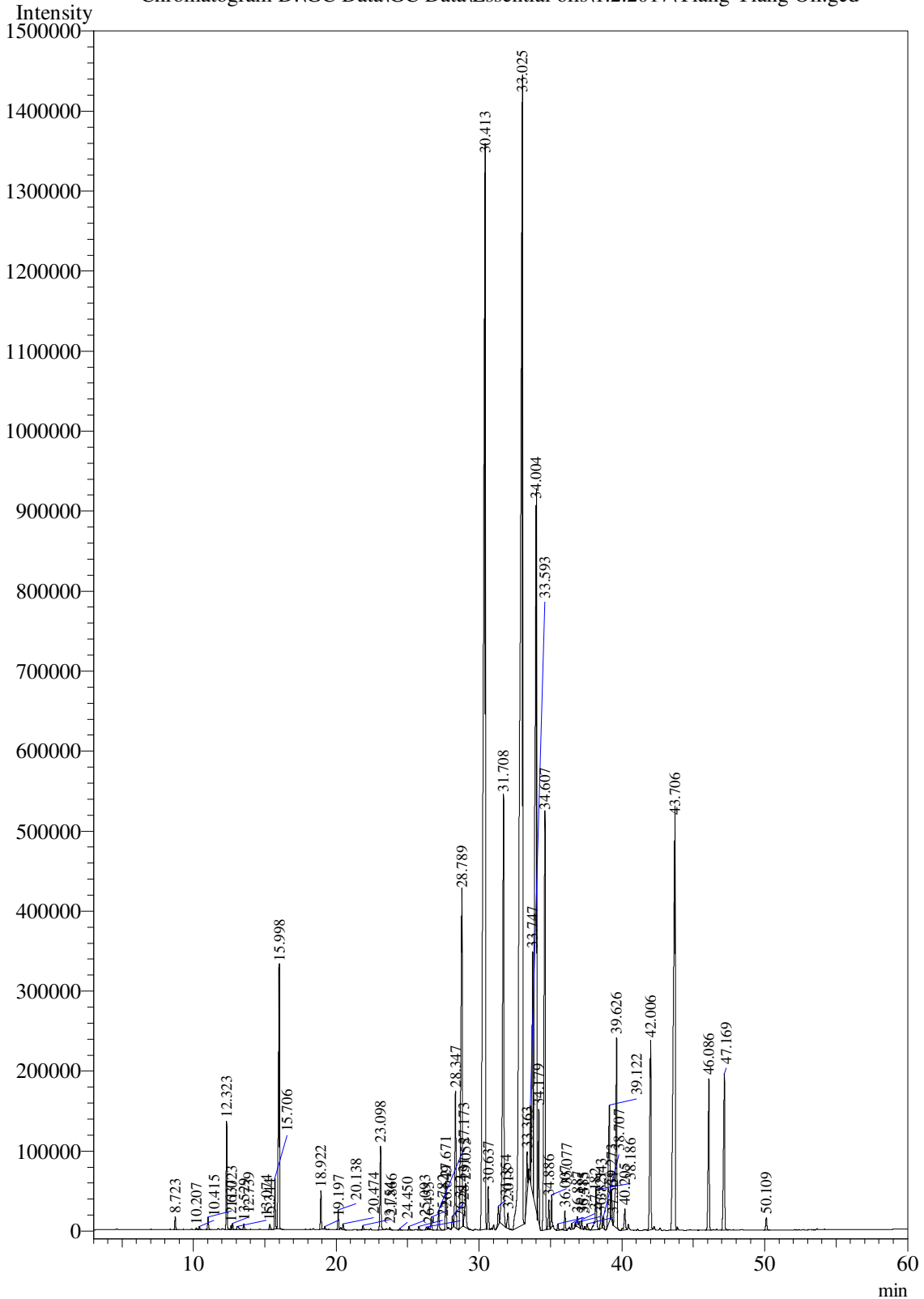


Sample Information

Analysis Date & Time : 1/2/2017 9:28:40 AM
User Name : \$Admn.\$
Sample Name : \$Ylang Ylang Oil\$
Sample Type : \$Organic\$
Data Name : D:\GC Data\GC Data\Essential oils\1.2.2017\Ylang Ylang Oil.gcd

Chromatogram D:\GC Data\GC Data\Essential oils\1.2.2017\Ylang Ylang Oil.gcd



Peak Table - Channel 1

Peak#	Ret.Time	Area	Area%	Name
1	8.723	63794	0.0914	Alpha-pinene
2	10.207	8615	0.0123	Bois de Rose oxide
3	10.415	15197	0.0218	Pinene beta
4	11.023	62883	0.0901	Myrcene
5	12.323	522331	0.7482	Anisole para-methyl
6	12.637	16626	0.0238	Limonene
7	12.739	36211	0.0519	Eucalyptol
8	13.074	35058	0.0502	Trans-beta-ocimene
9	13.529	30028	0.0430	Cis-beta-ocimene
10	15.344	32567	0.0466	2-Carene
11	15.706	263512	0.3775	Methyl benzoate
12	15.998	1761427	2.5231	Linalool
13	18.922	209311	0.2998	Benzyl acetate
14	19.197	16379	0.0235	Benzoate ethyl
15	20.138	110413	0.1582	Alpha-terpineol
16	20.474	31378	0.0449	Trans-Anethole
17	21.866	28330	0.0406	Nerol
18	23.098	518452	0.7426	Geraniol
19	23.754	12452	0.0178	Geranial
20	24.450	10426	0.0149	Anethole (Z)
21	25.093	21935	0.0314	1-Nitro-2-phenylethane
22	25.782	22721	0.0325	Guaiacol 4-vinyl
23	26.312	20410	0.0292	Bicyclo[5.2.0]nonane, 4-methylene-2,8,8-trime
24	26.455	13802	0.0198	Prezizaene
25	26.649	80403	0.1152	Elemene gamma
26	27.173	140551	0.2013	Cubebene alpha
27	27.671	297519	0.4262	Eugenol
28	28.131	78587	0.1126	TAlpha-ylangene
29	28.347	908533	1.3014	Copaene
30	28.789	2807000	4.0207	Neryl acetate
31	29.055	404295	0.5791	Beta-elemene
32	30.413	13221010	18.9378	Beta-caryophyllene
33	30.637	262210	0.3756	Copaene beta
34	31.354	120506	0.1726	Cinnamyl acetate (E)
35	31.708	3514235	5.0338	Alpha-humulene
36	32.018	126583	0.1813	Muurolo-4(14),5-diene cis
37	33.025	17193973	24.6286	Germacrene D
38	33.363	337359	0.4832	Cubebene alpha
39	33.593	384421	0.5506	Alpha-Muuroloene
40	33.747	1703553	2.4402	Bergamotene alpha-, cis
41	34.004	7661077	10.9737	Farnesene (E,E)-alpha
42	34.179	663534	0.9504	Cadinene gamma
43	34.607	3383820	4.8470	Cadinene delta
44	34.886	174115	0.2494	Cadina-1,4-diene trans
45	35.077	177923	0.2549	Cadinene alpha

Peak#	Ret.Time	Area	Area%	Name
46	35.515	38034	0.0545	Elemol
47	36.007	120636	0.1728	E-Nerolidol
48	36.485	33869	0.0485	Eudesmol alpha
49	36.721	23985	0.0344	Ethyl 1,2,3-trimethyl-2-cyclopentene-1-carboxy
50	36.887	107857	0.1545	Viridiflorol
51	37.182	59937	0.0859	1,2,5,5,8a-Pentamethyl-1,2,3,5,6,7,8,8a-octahy
52	37.564	47448	0.0680	Cubenol
53	38.186	369637	0.5295	Junenol
54	38.543	158393	0.2269	Epicubenol
55	38.707	68414	0.0980	Cubenol 1,10-di-epi
56	39.122	1053176	1.5086	T-Muurolol
57	39.273	169506	0.2428	Muurolol alpha
58	39.626	1448589	2.0750	Cadin-4-en-10-ol
59	40.205	170300	0.2439	Salvial-4(14)-en-1-one
60	42.006	1433936	2.0540	Farnesol
61	43.706	4642544	6.6500	Benzyl benzoate
62	46.086	1087541	1.5578	Farnesyl acetate 3
63	47.169	1189748	1.7042	Benzyl salicylate
64	50.109	83881	0.1202	Geranyl benzoate
Total		69812896	100.0000	