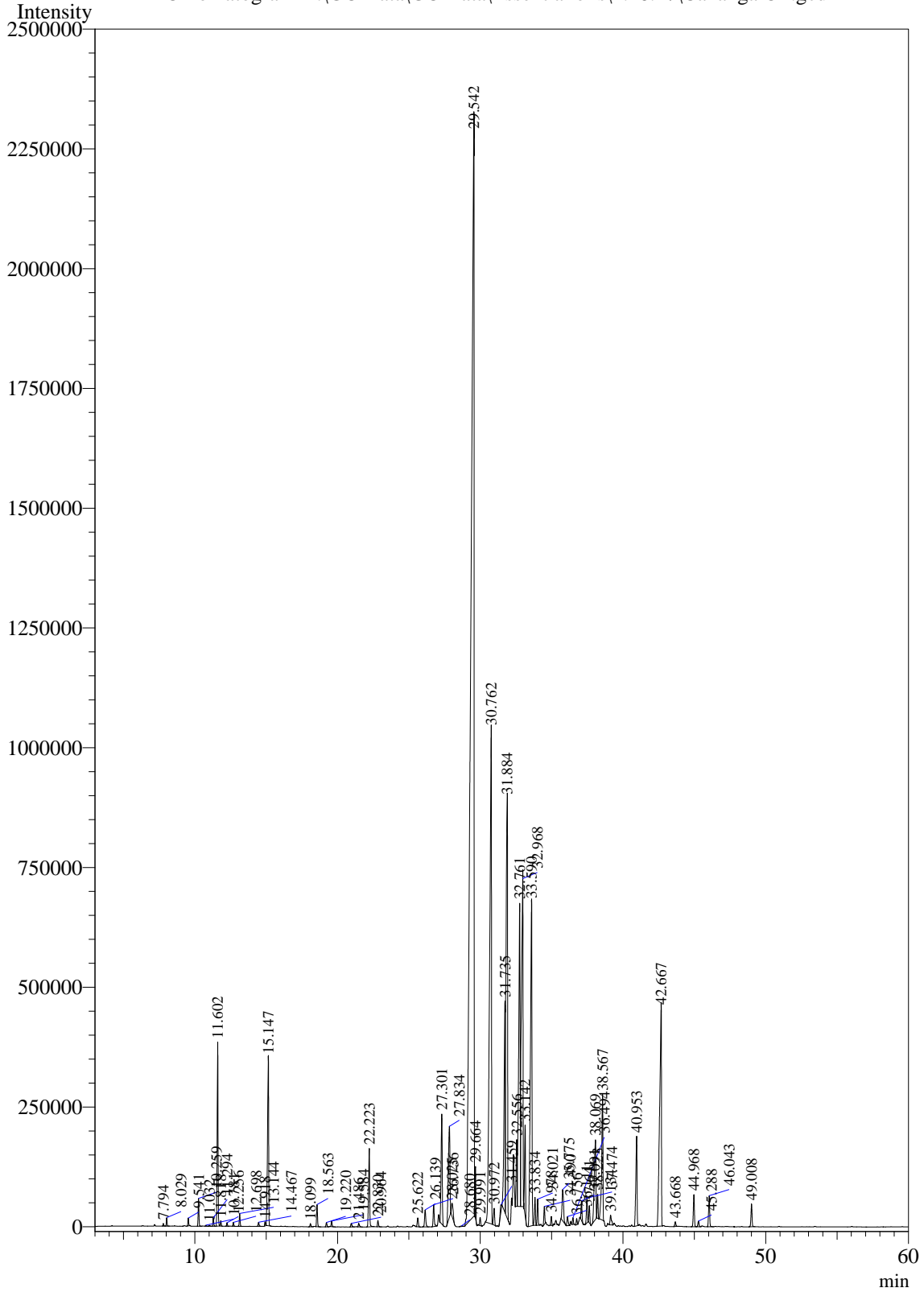


Sample Information

Analysis Date & Time : 1/18/2017 8:39:17 AM  
User Name : \$Admn.\$  
Sample Name : Cananga Oil  
Sample Type : \$Organic\$  
Data Name : D:\GC Data\GC Data\Essential oils\1.18.17\Cananga Oil.gcd

Chromatogram D:\GC Data\GC Data\Essential oils\1.18.17\Cananga Oil.gcd



Peak Table - Channel 1

Peak#	Ret.Time	Area	Area%	Name
1	7.794	19968	0.0217	Alpha-thujene
2	8.029	62807	0.0683	Alpha-Pinene
3	9.541	58914	0.0641	Sabinene
4	10.259	228665	0.2486	Myrcene
5	10.781	8133	0.0088	Alpha-phellandrene
6	11.032	8697	0.0095	3-Hexen-1-ol, 1-acetate
7	11.294	70907	0.0771	Alpha-terpinene
8	11.602	1615759	1.7568	1-Methoxy-1,3,5-cycloheptatriene
9	11.818	41674	0.0453	(2E,4E)-3,7-Dimethyl-2,4-octadiene
10	12.256	29126	0.0317	Trans-beta-ocimene
11	12.698	32560	0.0354	Cis-beta-ocimene
12	13.144	110408	0.1200	Gamma-terpinene
13	14.467	41316	0.0449	Alpha-terpinolene
14	14.918	32941	0.0358	Methyl benzoate
15	15.147	1944546	2.1143	Linaool
16	18.099	30014	0.0326	Benzyl acetate
17	18.563	204335	0.2222	Terpinen-4-ol
18	19.220	42051	0.0457	Alpha-terpineol
19	19.584	49740	0.0541	Methyl chavicol
20	20.964	38583	0.0420	2Z,6E-Farnesol
21	21.486	38630	0.0420	Neral
22	22.223	862767	0.9381	Nerol
23	22.830	61530	0.0669	Citral
24	25.622	100508	0.1093	Bicyclogermacrene
25	26.139	208350	0.2265	Alpha-Cubebene
26	26.736	245366	0.2668	Cis-Isoeugenol
27	27.301	1275429	1.3868	Alpha-Copaene
28	27.834	1501830	1.6330	Neryl acetate
29	28.025	218776	0.2379	Beta-elemene
30	28.680	14846	0.0161	Methyl-Isoeugenol
31	29.542	35361370	38.4490	Trans-Caryophyllene
32	29.664	355996	0.3871	Beta-copaene
33	29.991	82344	0.0895	Aromadendrene
34	30.762	9225916	10.0315	Alpha-Humulene
35	30.972	198261	0.2156	Isogermacrene D
36	31.459	87628	0.0953	Cadina-1(6),4-diene
37	31.735	2732282	2.9709	gamma-Muurolene
38	31.884	6662796	7.2446	Germacrene D
39	32.556	755556	0.8215	Alpha-Muurolene
40	32.761	4440221	4.8279	Alpha-trans-Bergamotene
41	32.968	5441150	5.9163	Farnesene (E,E)- alpha
42	33.142	831995	0.9046	Alpha-amorphene
43	33.590	5077660	5.5210	Delta-Cadinene
44	33.834	278697	0.3030	Cadina-1,4-diene
45	34.021	246436	0.2680	Alpha-cadinene

Peak#	Ret.Time	Area	Area%	Name
46	34.490	170489	0.1854	Hedycaryol
47	34.978	82720	0.0899	Nerolidol
48	35.775	469783	0.5108	Caryophyllene oxide
49	36.111	108840	0.1183	Delta-cadinol
50	36.494	63635	0.0692	Allo-hedycaryol
51	36.756	57238	0.0622	Humulene epoxide II
52	37.091	191030	0.2077	Junenol
53	37.474	248986	0.2707	Diepicubenol 1,10
54	37.641	168644	0.1834	Cubenol
55	38.069	1314560	1.4293	Alpha-Cadinol
56	38.223	219813	0.2390	Delta-Cedrol
57	38.567	1604237	1.7443	Cadin-4-en-10-ol
58	39.134	137628	0.1496	Beta-Costol
59	40.953	1104386	1.2008	Farnesol (2Z,6Z)
60	42.667	4004560	4.3542	Benzyl benzoate
61	43.668	51046	0.0555	Cis-trans-Bergamatol acetate
62	44.968	348718	0.3792	Farnesyl acetate
63	45.288	63726	0.0693	Cis-Lanceol acetate
64	46.043	338831	0.3684	Benzyl salicylate
65	49.008	243101	0.2643	Geranyl benzoate
<b>Total</b>		91969455	100.0000	