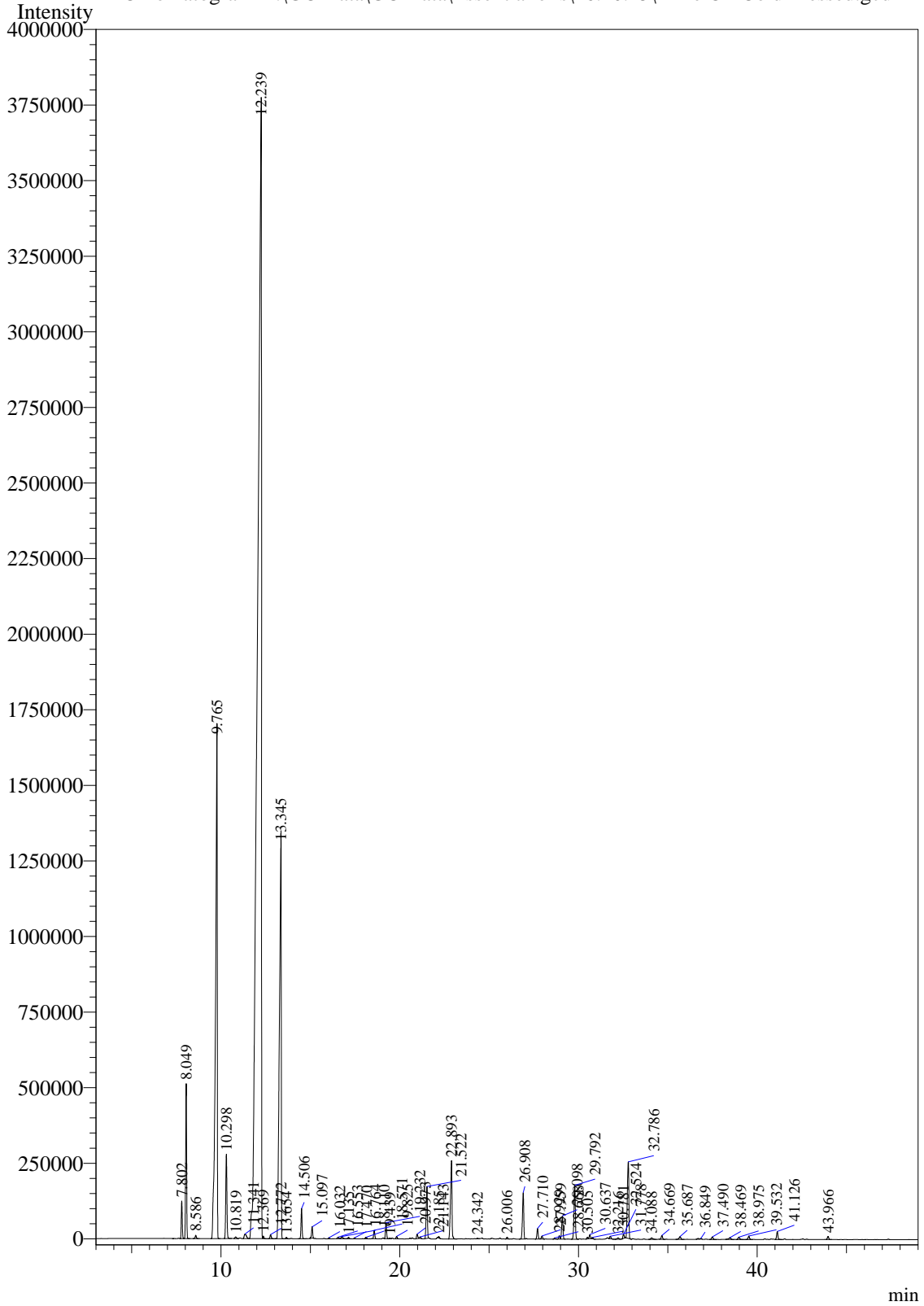


Sample Information

Analysis Date & Time : 10/18/2015 9:58:24 AM
User Name : \$Admn.\$
Sample Name : Lime Oil Cold Pressed
Sample Type : \$Organic\$
Data Name : D:\GC Data\GC Data\Essential oils\16.10.15\Lime Oil Cold Pressed.gcd

Chromatogram D:\GC Data\GC Data\Essential oils\16.10.15\Lime Oil Cold Pressed.gcd



Peak Table - Channel 1

Peak#	Ret.Time	Area	Area%	Name
1	7.802	463534	0.5154	Alpha-Thujene
2	8.049	1897260	2.1097	Alpha-pinene
3	8.586	45958	0.0511	Camphene
4	9.765	11226619	12.4839	Beta-Pinene
5	10.298	1259420	1.4005	Myrcene
6	10.819	30873	0.0343	Alpha-phellandrene
7	11.341	129997	0.1446	Alpha-terpinene
8	12.239	57179596	63.5831	Limonene
9	12.369	27254	0.0303	Trans-beta-ocimene
10	12.772	61635	0.0685	Trans-beta-ocimene
11	13.345	9346515	10.3932	Gamma-Terpinene
12	13.654	17963	0.0200	4-Thujanol
13	14.506	407597	0.4532	Alpha-terpinolene
14	15.097	164589	0.1830	Linalool
15	16.032	14160	0.0157	Artemiseole
16	16.553	26836	0.0298	Cis-Limonene oxide
17	16.764	43812	0.0487	Trans-Limonene oxide
18	17.135	24901	0.0277	Epoxyterpinolene
19	17.470	16640	0.0185	2-Allyl-1,1-dimethylcyclopropane
20	18.110	27273	0.0303	3,5-Octadien-2-one
21	18.571	123493	0.1373	Terpinen-4-ol
22	19.232	233335	0.2595	Alpha-terpineol
23	19.439	8087	0.0090	7-Dodcen-9-yn-1-ol
24	19.825	34725	0.0386	Decanal
25	20.973	71051	0.0790	Geraniol
26	21.143	21680	0.0241	2,3-Epoxygeranial
27	21.522	811577	0.9025	Neral
28	22.185	16641	0.0185	Linalyl anthranilate
29	22.893	1474148	1.6392	Citral a
30	24.342	8948	0.0100	3-Hexen-2-one, 5-methyl
31	26.006	28998	0.0322	Limonene-1,2-diol
32	26.908	758985	0.8440	Neryl acetate
33	27.710	163151	0.1814	Lavandulyl acetate
34	27.959	47511	0.0528	Beta-Elemene
35	28.668	21670	0.0241	Decanal
36	28.929	53732	0.0597	Alpha-Bergamotene
37	29.098	384221	0.4272	Beta-caryophyllene
38	29.792	927157	1.0310	trans-alpha-Bergamotene
39	30.505	28470	0.0317	Alpha-humulene
40	30.637	62355	0.0693	(E)-beta-Famesene
41	30.781	17743	0.0197	Beta-Santalene
42	31.778	40626	0.0452	Alpha-costol
43	32.216	29967	0.0333	Pentadecane
44	32.524	72239	0.0803	Bisabolene (Z)-alpha
45	32.786	1495066	1.6625	Beta-Bisabolene

Peak#	Ret.Time	Area	Area%	Name
46	34.088	38026	0.0423	Bisabolene (E)-alpha
47	34.669	63950	0.0711	Gamma-elemene
48	35.687	61516	0.0684	Caryophyllene oxide
49	36.849	28935	0.0322	Isogeranial
50	37.490	47204	0.0525	Spathulenol
51	38.469	48949	0.0544	8-Decen-2-one, 9-methyl-5-methylene-
52	38.975	48696	0.0541	1,2,4-Trimethyl-3-nitrobicyclo[3.3.1]nonan
53	39.532	60907	0.0677	Alpha-Bisabolol
54	41.126	130516	0.1451	Hernianin
55	43.966	52222	0.0581	Octadecanal
Total		89928929	100.0000	