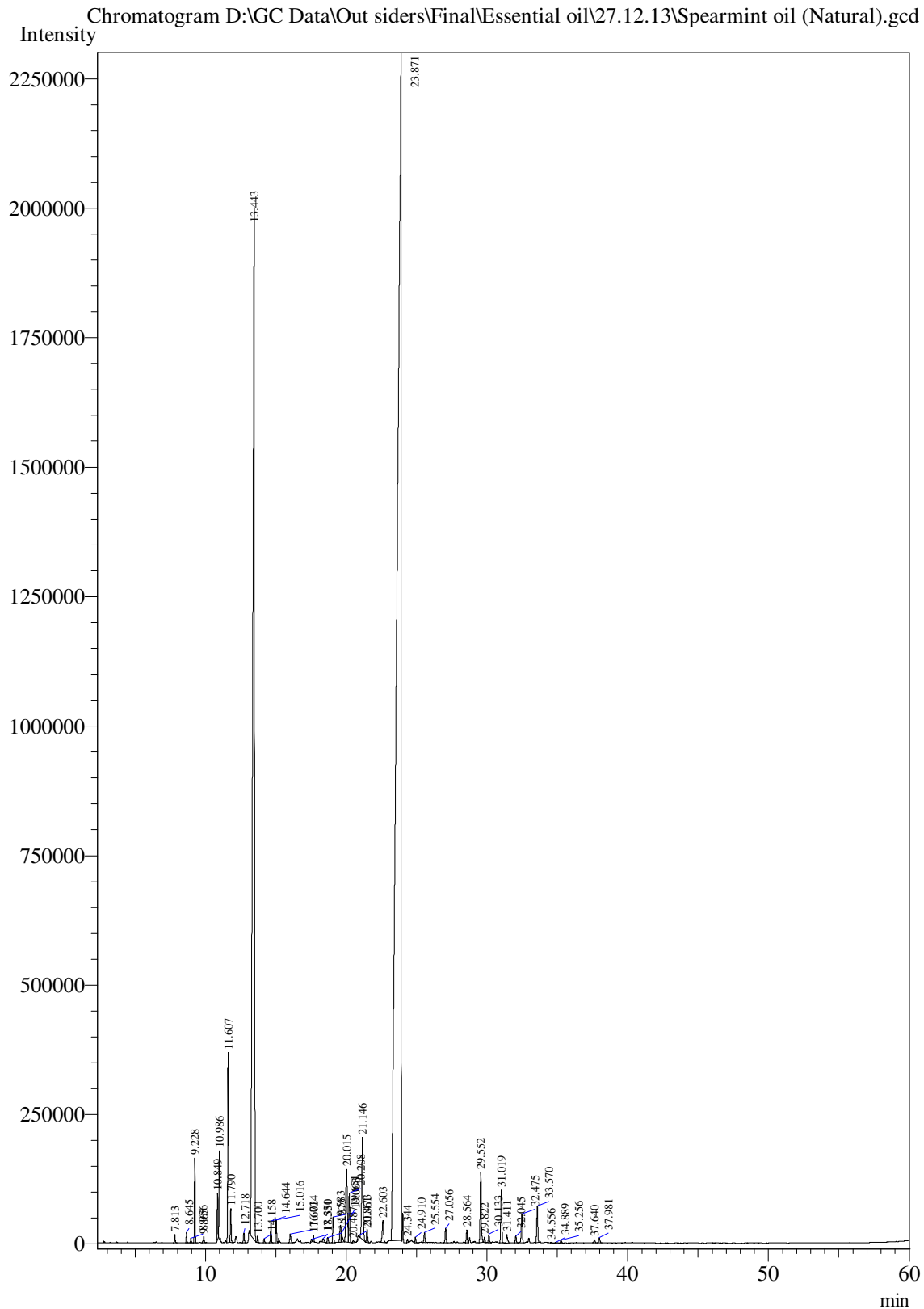


Sample Information

Analysis Date & Time : 12/27/2013 11:20:03 AM
User Name : \$Ajai Kumar\$
Sample Name : Spearmint oil (Natural)
Sample Type : \$Organic\$
Data Name : D:\GC Data\Out siders\Final\Essential oil\27.12.13\Spearmint oil (Natural).gcd



Peak Table - Channel 1

Peak#	Ret.Time	Area	Area%	Name
1	7.813	55734	0.0747	-
2	8.645	70428	0.0944	-
3	8.956	32870	0.0440	Alpha-Thujene
4	9.228	578668	0.7753	Alpha-Pinene
5	9.865	55394	0.0742	Camphene
6	10.849	325514	0.4361	Sabinene
7	10.986	608752	0.8156	Beta-Pinene
8	11.607	1465028	1.9628	Myrcene
9	11.790	252278	0.3380	Ethyl-Hexanol
10	12.718	87394	0.1171	Alpha-Terpinene
11	13.443	17235367	23.0908	Limonene
12	13.700	50611	0.0678	trans-beta-Ocimene
13	14.158	34870	0.0467	Cis-beta-Ocimene
14	14.644	175329	0.2349	Gamma-Terpinene
15	15.016	185052	0.2479	4-Thujanol
16	16.014	94164	0.1262	Terpinolene
17	17.531	30362	0.0407	Menth-2-en-1-ol cis-, para
18	17.672	49448	0.0662	3-octyl-Acetate
19	18.350	50242	0.0673	Trans-limomene oxide
20	18.675	52609	0.0705	Isopulegol
21	19.063	228842	0.3066	Menthone
22	19.583	199224	0.2669	Isomenthone
23	19.651	105888	0.1419	Neomenthol
24	20.015	1077095	1.4430	Menthol
25	20.208	494422	0.6624	Terpinen-4-ol
26	20.487	20615	0.0276	Neoisomenthol
27	20.861	47772	0.0640	Alpha-Terpineol
28	21.146	1231937	1.6505	Z- dihydro-Carvone
29	21.473	132987	0.1782	E-dihydro-Carvone
30	22.603	282686	0.3787	cis-Carveol
31	23.871	46520928	62.3257	Carvone
32	24.344	32447	0.0435	Carvone oxide, trans-
33	24.910	50763	0.0680	Carvone oxide, cis-
34	25.554	100732	0.1350	Menthyl acetate
35	27.056	139954	0.1875	Dihydrocarvyl acetate
36	28.564	118842	0.1592	trans-Carveyl acetate
37	29.552	737378	0.9879	Beta-Bourbonene
38	29.822	47417	0.0635	Beta-Elemene
39	30.133	77256	0.1035	Cis-Jasmone
40	31.019	530005	0.7101	Trans-Caryophyllene
41	31.411	97024	0.1300	Beta-Cubebene
42	32.045	66197	0.0887	Isogermacrene D
43	32.475	308739	0.4136	Farnesene (E)-beta
44	33.570	358403	0.4802	Germacrene D
45	34.556	9739	0.0130	Gamma-Elemene

Peak#	Ret. Time	Area	Area%	Name
46	34.889	7492	0.0100	Germacrene A
47	35.256	30883	0.0414	Delta-Cadinene
48	37.640	38252	0.0512	Caryophyllene oxide
49	37.981	57560	0.0771	Viridiflorol
Total		74641593	100.0000	