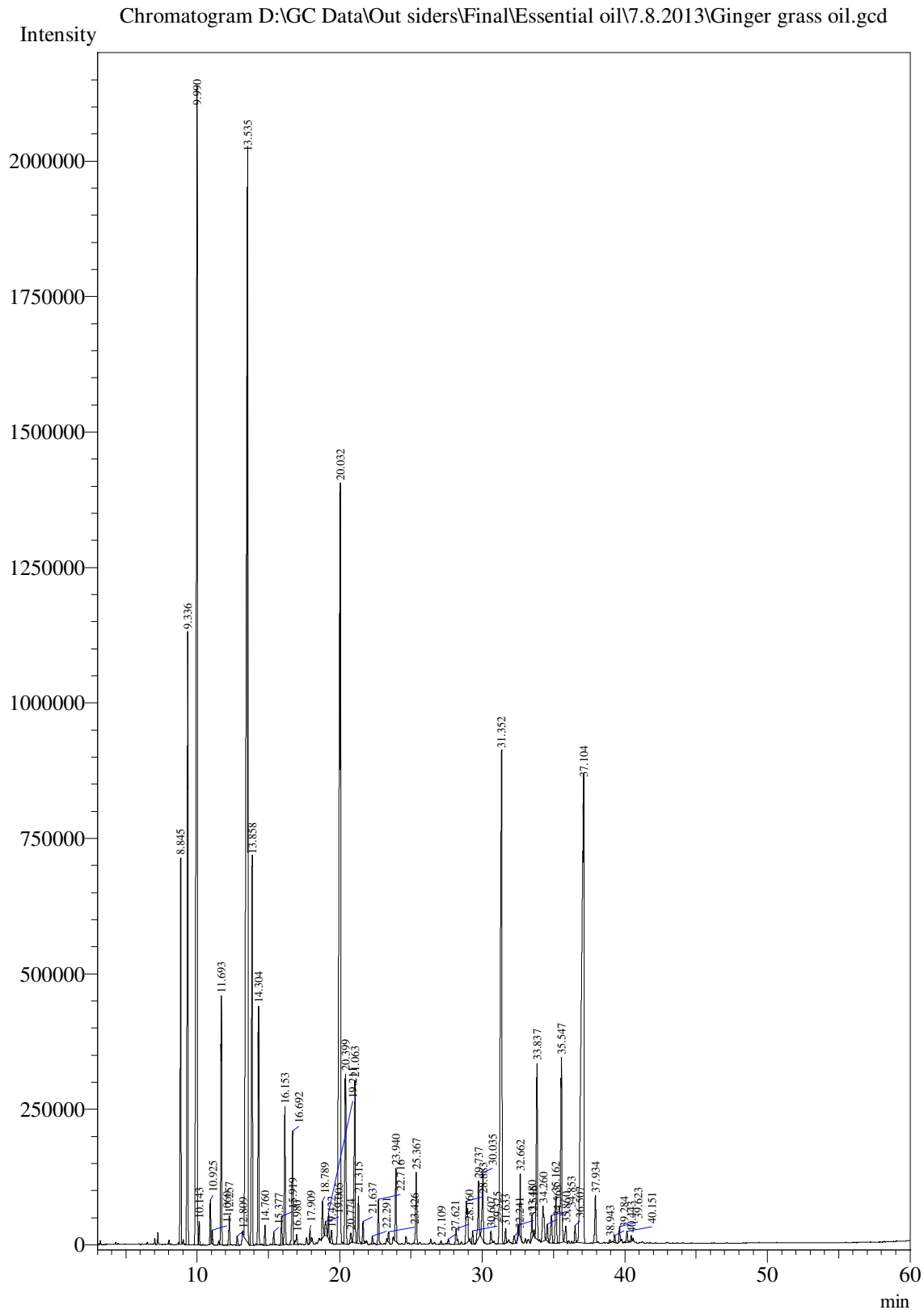


Sample Information

Analysis Date & Time : 8/7/2013 2:58:58 PM
User Name : \$Ajai Kumar\$
Sample Name : Ginger grass oil
Sample Type : \$Organic\$
Data Name : D:\GC Data\Out siders\Final\Essential oil\7.8.2013\Ginger grass oil.gcd



Peak Table - Channel 1

Peak#	Ret.Time	Area	Area%	Name
1	8.845	2736089	2.9314	Cyclofenchene
2	9.336	4845230	5.1910	Alpha-Pinene
3	9.990	12275743	13.1518	Camphene
4	10.143	141352	0.1514	Thuja-2,4(10)-diene
5	10.925	292457	0.3133	Sabinene
6	11.060	85225	0.0913	Beta-Pinene
7	11.693	1868757	2.0021	Beta-Myrcene
8	12.257	259362	0.2779	Alpha-phellandrene
9	12.809	78918	0.0846	Alpha-Terpinene
10	13.535	16582912	17.7664	Limonene
11	13.858	3410782	3.6542	Trans-beta-Ocimene
12	14.304	1881192	2.0154	cis-beta-Ocimene
13	14.760	152308	0.1632	gamma-Terpinene
14	15.377	122727	0.1315	4-Nonanone
15	15.919	236401	0.2533	Camphenilone
16	16.153	1162941	1.2459	Terpinolene
17	16.692	1050891	1.1259	Linalool
18	16.980	110614	0.1185	3-Tetradecyn-1-ol
19	17.909	99783	0.1069	Alpha-Campholenic aldehyde
20	18.789	364590	0.3906	Camphor
21	19.005	177574	0.1902	Camphene hydrate
22	19.211	216121	0.2315	Cis-Verbenol
23	19.422	137986	0.1478	Citronellal
24	20.032	11200205	11.9995	Borneol
25	20.399	1907507	2.0436	trans-3(10)-Caren-2-ol
26	20.774	97898	0.1049	4-Carvomenthol
27	21.063	1681498	1.8015	Alpha-Terpineol
28	21.315	424408	0.4547	Myrtenol
29	21.637	180751	0.1937	Decanal
30	22.291	65474	0.0701	Trans Carveol
31	22.716	390383	0.4182	Citronellol
32	23.426	91434	0.0980	Methylcamphenoate
33	23.940	650044	0.6964	Geraniol
34	25.367	669186	0.7169	Bornyl acetate
35	27.109	38794	0.0416	Delta Elemene
36	27.621	42554	0.0456	Alpha-Cubebene
37	28.160	198047	0.2122	Citronellyl acetate
38	28.883	679043	0.7275	Cyclosativene
39	29.325	122861	0.1316	Alpha Copaene
40	29.737	585875	0.6277	Beta-Bourbonene
41	30.035	770555	0.8255	Beta elemene
42	30.607	121507	0.1302	Bisabolene (Z)-alpha-
43	31.352	6989981	7.4888	Caryophyllene
44	31.633	133927	0.1435	Beta-Cubebene
45	32.241	102137	0.1094	Isogermacrene D

Peak#	Ret. Time	Area	Area%	Name
46	32.516	101048	0.1083	Cadina-3,5-diene
47	32.662	529940	0.5678	Alpha Humulene
48	33.480	235616	0.2524	Cadina-1(6),4-diene
49	33.837	1768568	1.8948	Germacrene D
50	34.260	549895	0.5891	Gamma-Amorphene
51	34.563	168304	0.1803	Alpha-Muurolene
52	34.853	344345	0.3689	Beta-Bisabolene
53	35.162	589866	0.6320	Gamma-Cadinene
54	35.547	1994962	2.1373	Delta-Cadinene
55	35.860	204785	0.2194	Alpha-longipinene
56	36.507	163625	0.1753	Alpha-Elemol
57	37.104	10366242	11.1060	Asarone
58	37.934	493394	0.5286	Caryophyllene oxide
59	38.943	30580	0.0328	Humulene epoxide II
60	39.284	68306	0.0732	Selina-6-en-4-ol
61	39.623	138663	0.1486	Epicubenol
62	40.151	109047	0.1168	Eudesmol epi-gamma
63	40.443	47655	0.0511	Cubenol-1,10-Di-epi
Total		93338865	100.0000	