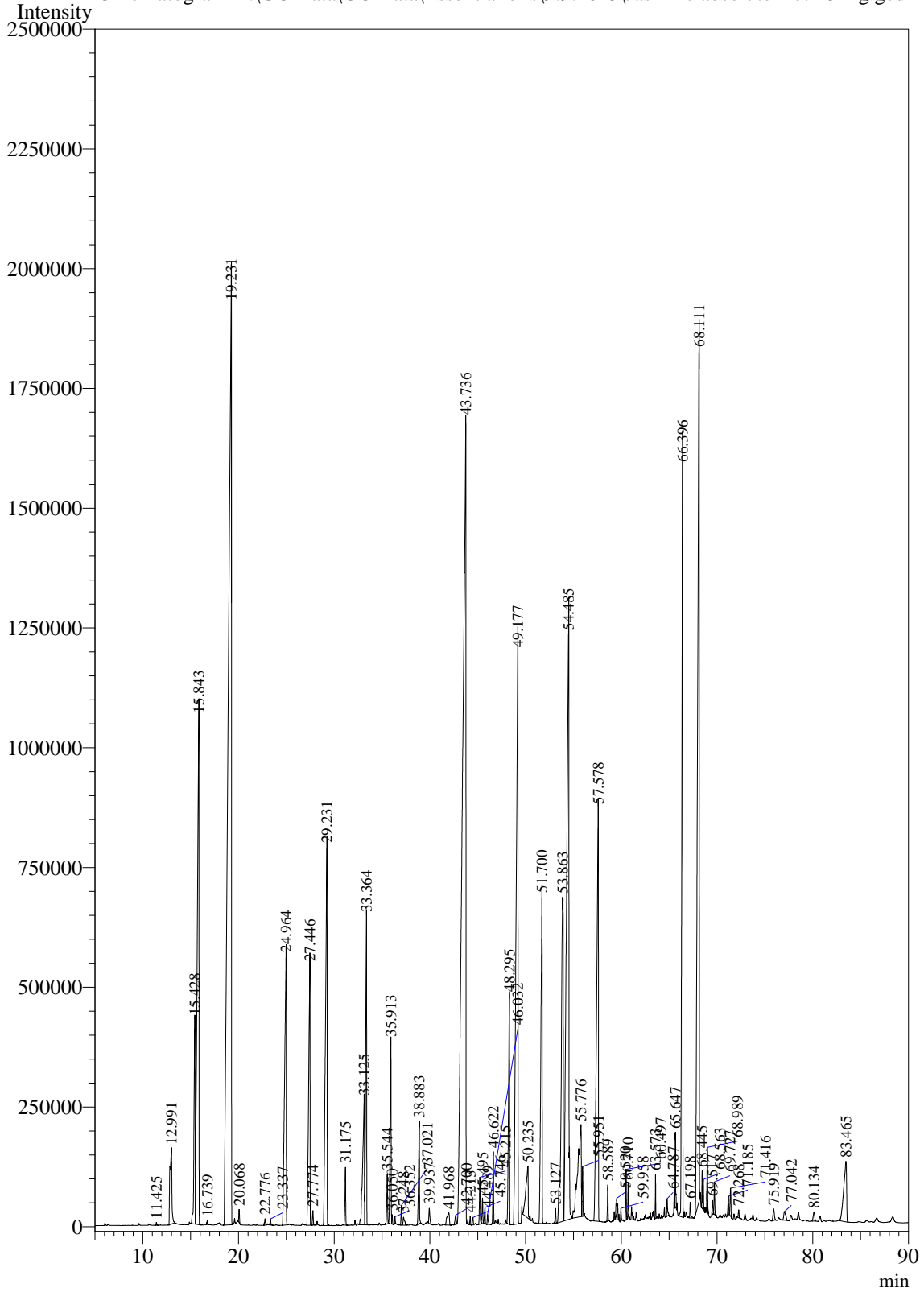


Sample Information

Analysis Date & Time : 9/9/2015 4:05:04 PM
User Name : \$Admn.\$
Sample Name : Jasmine absolute-Lot-25 Kg
Sample Type : \$Organic\$
Data Name : D:\GC Data\GC Data\Essential oils\9.9.2015\Jasmine absolute-Lot-25 Kg.gcd

Chromatogram D:\GC Data\GC Data\Essential oils\9.9.2015\Jasmine absolute-Lot-25 Kg.gcd



Peak Table - Channel 1

Peak#	Ret.Time	Area	Area%	Name
1	11.425	27724	0.0106	Hex-(3Z)-enyl acetate
2	12.991	2252719	0.8587	Benzyl alcohol
3	15.428	3621880	1.3806	Cresol para
4	15.843	13340584	5.0850	Linalool
5	16.739	50681	0.0193	Maltol
6	19.231	45779507	17.4498	Benzyl acetate
7	20.068	142192	0.0542	Creosol
8	22.776	88419	0.0337	Phenethyl acetate 2
9	23.337	81639	0.0311	Chavicol
10	24.964	6807243	2.5947	Benzo-2,3-pyrrole
11	27.446	5401250	2.0588	Eugenol
12	27.774	177596	0.0677	8-Hydroxylinalool
13	29.231	9190529	3.5032	cis-Jasmone
14	31.175	664545	0.2533	cis-Isoeugenol
15	33.125	3227853	1.2304	Jasmin lactone cis
16	33.364	4485557	1.7098	Farnesene (E,E)-alpha
17	35.544	626538	0.2388	trans-Nerolidol
18	35.913	2737824	1.0436	3-Hexen-1-ol, benzoate, (3Z)
19	36.050	101862	0.0388	Benzoic acid, 10-chlorodecyl ester
20	36.352	62138	0.0237	Hex-(2E)-enyl benzoate
21	37.021	207635	0.0791	Benzoic acid, 2-(acetylamino)- methyl ester
22	37.248	173736	0.0662	Eugenol methoxy
23	38.883	1439409	0.5487	Methyl jasmonate
24	39.937	235182	0.0896	Jasmonate methyl-epi
25	41.968	441719	0.1684	11,11-Dimethyl-spiro[2,9]dodeca-3,7-dien
26	42.700	163839	0.0625	Coniferyl aldehyde
27	43.736	41428477	15.7913	Benzyl benzoate
28	44.213	84985	0.0324	Thymoquinone
29	44.489	104811	0.0400	cis-anti-cis-Tricyclo[7.3.0.0(2,6)]-7-dodecene
30	45.215	544364	0.2075	Neophytadiene
31	45.495	300299	0.1145	2-Pentadecanone, 6,10,14-trimethyl-
32	45.746	210640	0.0803	2-Hexadecen-1-ol, 3,7,11,15-tetramethyl
33	46.032	137460	0.0524	Benzyl salicylate
34	46.622	771481	0.2941	3,7,11,15-Tetramethyl-2-hexadecen-1-ol
35	48.295	3628588	1.3831	Hexadecanoic acid, methyl ester
36	49.177	16283483	6.2068	Isophytol
37	50.235	1836635	0.7001	Hexadecanoic acid n
38	51.700	6537196	2.4918	Geranyl linalool E,E
39	53.127	177697	0.0677	5-Isopropyl-2-methylphenyl benzoate
40	53.863	9474593	3.6114	Linolenate methyl
41	54.485	21136704	8.0567	Phytol
42	55.776	4820347	1.8374	Linolenate methyl
43	55.951	590801	0.2252	Tricos-(9Z)-ene
44	57.578	11188154	4.2646	Phytol, acetate
45	58.589	351531	0.1340	Formic acid, 1-(4,7-dihydro-2-methyl-7-oxopy

Peak#	Ret.Time	Area	Area%	Name
46	59.520	223964	0.0854	9,12,15-Octadecatrienoic acid, methyl ester, (Z
47	59.958	115689	0.0441	Methyl 18-methylnonadecanoate
48	60.497	442975	0.1688	4,8,12,16-Tetramethylheptadecan-4-olide
49	60.710	248918	0.0949	Squalene
50	63.573	280651	0.1070	Benzyl myristate
51	64.787	212762	0.0811	Eicosyl heptafluorobutyrate
52	65.647	562750	0.2145	9,12,15-Octadecatrienoic acid, phenylmethyl e
53	66.396	11423790	4.3544	Squalene
54	67.198	196477	0.0749	Oxirane, 2,2-dimethyl-3-[3,7-dimethyl-9-(phen
55	68.111	21909842	8.3514	Solanesol
56	68.445	345101	0.1315	2,2-Dimethyl-3-[(3E,7E,11E,15E)-3,7,12,16,2
57	68.563	246129	0.0938	Benzyl undecanoate
58	68.989	476919	0.1818	6,10,14,18,22-Tetracosapentaen-2-ol, 3-bromo
59	69.517	169491	0.0646	Lactaropallidin
60	69.727	353381	0.1347	Oxirane, 2,2-dimethyl-3-(3,7,12,16,20-pentam
61	71.185	228378	0.0871	Vitamin E
62	71.416	347034	0.1323	1-Hexadecene, 7,11,15-trimethyl-3-methylene
63	72.268	87114	0.0332	Dodecanoic acid, phenylmethyl ester
64	75.919	238004	0.0907	gamma-Sitosterol
65	77.042	253374	0.0966	Alpha-Amyrin
66	80.134	198761	0.0758	Cholest-4-en-3-one
67	83.465	2649652	1.0100	Palmitaldehyde
Total		262349202	100.0000	