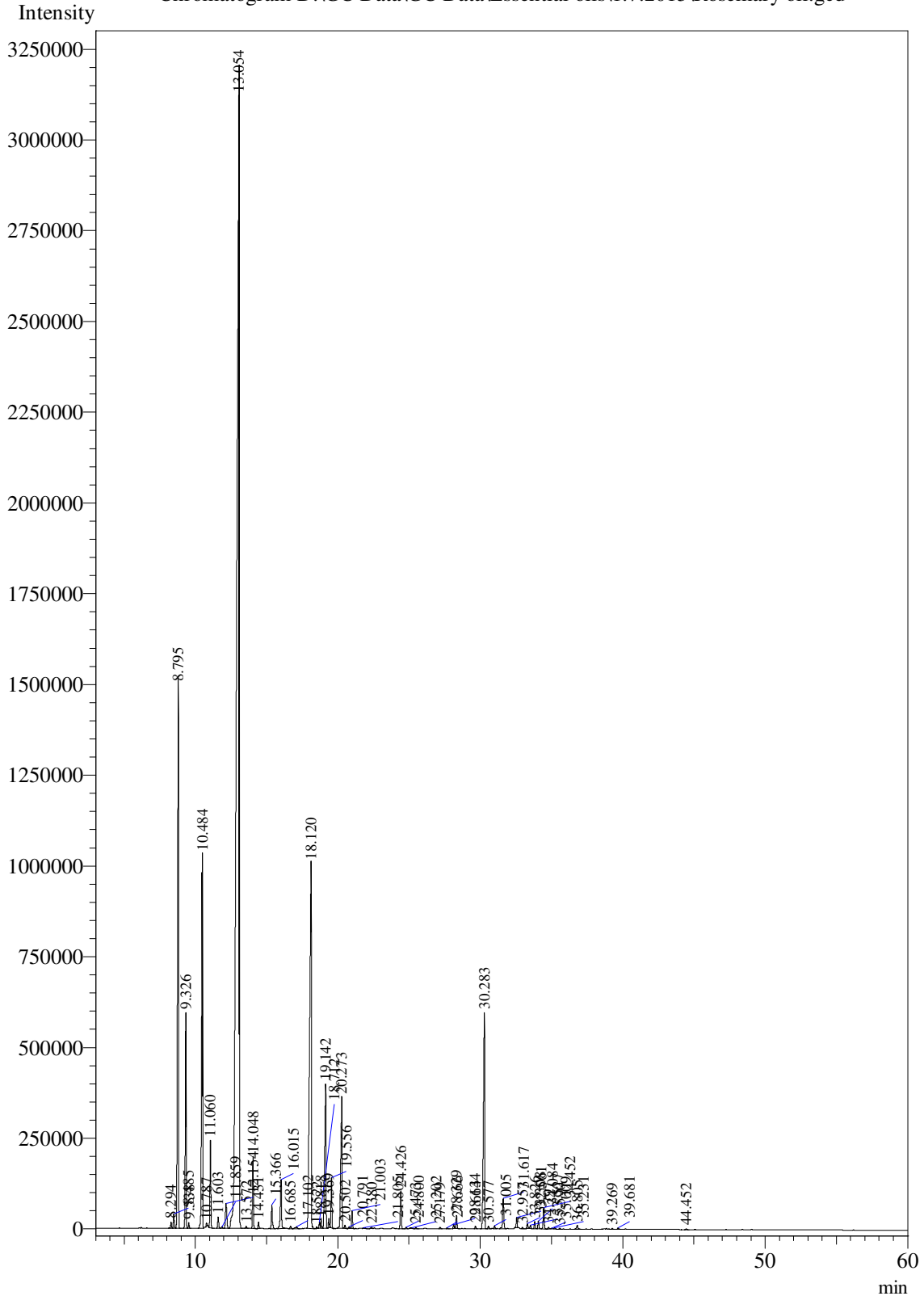


Sample Information

Analysis Date & Time : 7/1/2015 9:30:14 PM
 User Name : \$Admn.\$
 Sample Name : \$Rosemary oil\$
 Sample Type : \$Organic\$
 Data Name : D:\GC Data\GC Data\Essential oils\1.7.2015\Rosemary oil.gcd

Chromatogram D:\GC Data\GC Data\Essential oils\1.7.2015\Rosemary oil.gcd



Peak Table - Channel 1

Peak#	Ret.Time	Area	Area%	Name
1	8.294	76013	0.0973	Tricyclene
2	8.485	177117	0.2267	Alpha-Thujene
3	8.795	7211154	9.2319	Alpha-pinene
4	9.326	2336121	2.9907	camphene
5	9.538	60041	0.0769	Thuja-2,4(10)-diene
6	10.484	4920377	6.2992	Beta-pinene
7	10.787	33135	0.0424	Vinyl amyl carbinol
8	11.060	1036041	1.3264	Myrcene
9	11.603	154618	0.1979	Phellandrene alpha
10	11.859	24525	0.0314	Delta-3-carene
11	12.154	473907	0.6067	Terpinene alpha
12	13.054	39125284	50.0890	Eucalyptol
13	13.572	23810	0.0305	Ocimene (E)- beta
14	14.048	798161	1.0218	Terpinene gamma
15	14.431	77809	0.0996	4-Thujanol
16	15.366	306919	0.3929	Alpha-terpinene
17	16.015	781218	1.0001	Linalool
18	16.685	35686	0.0457	Fenchyl alcohol
19	17.102	45552	0.0583	Chrysanthenone
20	18.120	8349505	10.6892	Camphor
21	18.522	18360	0.0235	Isopulgol 1
22	18.712	77102	0.0987	3-Pinanone
23	18.818	86296	0.1105	Pinocarvone
24	19.142	2489884	3.1876	Terpineol delta
25	19.369	111368	0.1426	Pinocamphone cis
26	19.556	603927	0.7732	Terpinen-4-ol
27	20.273	2279198	2.9179	Alpha-terpineol
28	20.502	37961	0.0486	Myrtenol
29	20.791	21526	0.0276	endo-Borneol
30	21.003	216123	0.2767	Verbenone
31	21.805	17858	0.0229	Isobornyl formate
32	22.380	21813	0.0279	Cuminaldehyde
33	24.426	496997	0.6363	Bornyl acetate
34	24.800	21698	0.0278	1-Hydroxy-3,4-dimethyl-6-ethylbenzene
35	25.202	5393	0.0069	Thymol
36	25.473	17526	0.0224	Carvacrol
37	27.179	21199	0.0271	Cubebene alpha
38	27.666	16712	0.0214	Eugenol
39	28.134	55988	0.0717	Ylangene
40	28.329	172126	0.2204	Copaene alpha
41	29.664	37486	0.0480	Methyl eugenol
42	30.283	3724107	4.7677	Trans-beta-caryophyllene
43	30.577	40917	0.0524	Beta-copaene
44	31.005	40146	0.0514	Aromadendrene
45	31.617	481747	0.6167	Humulene alpha

Peak#	Ret.Time	Area	Area%	Name
46	32.561	130183	0.1667	Muurolene gamma
47	32.957	19356	0.0248	Beta-selinene
48	33.308	64413	0.0825	Guaiene alpha
49	33.527	42100	0.0539	Muurolene alpha
50	33.826	94092	0.1205	Beta-Bisabolene
51	34.084	109199	0.1398	Cadinene gamma
52	34.452	306972	0.3930	Cadinene delta
53	34.797	23117	0.0296	Cadina-1,4-diene trans
54	35.009	10830	0.0139	Cadinene alpha
55	35.231	21032	0.0269	Calacorene alpha
56	35.590	13363	0.0171	Longifolol
57	36.805	70508	0.0903	Caryophyllene oxide
58	39.269	16923	0.0217	Jasmonate methyl
59	39.681	19229	0.0246	Costol alpha
60	44.452	9776	0.0125	1,6-Heptadien-4-ol, 4-propyl
Total		78111544	100.0000	