



Jade Bloom

Health, Healing, & Happiness®

Date: August 11th, 2020

CERTIFICATE OF ANALYSIS - GC PROFILING

Sample identification: Eucalyptus globulus- JB2050-882932

Type: Essential oil

ANALYSIS

Method: 10152018_10:1split.m - Analysis of the composition of an essential oil, or other volatile liquid, by GC-FID, identifications validated by GC-MS.

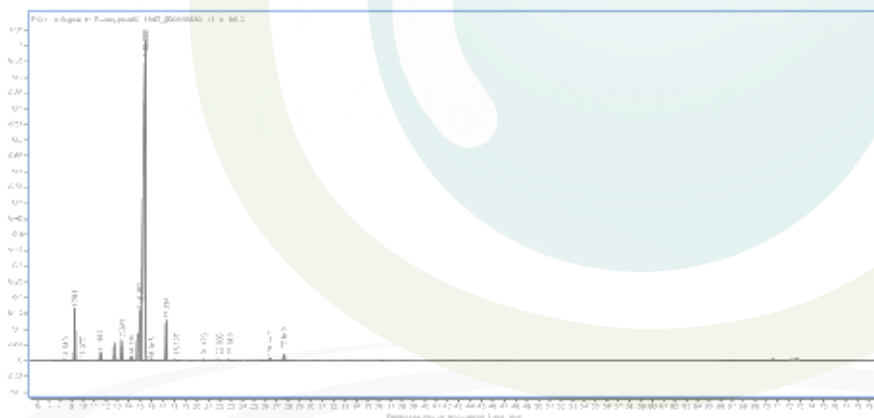
Analysis date: August 10th, 2020

Physical aspect: Clear liquid

CONCLUSION

No adulterant, contaminant or diluent has been detected using this method.

Peak	Compound	RT	Area Sum %
1	(3Z)-Hexenol	8.51	0.01
2	α -Thujene	8.983	0.02
3	α -Pinene	9.261	3.77
4	Camphene	9.977	0.04
5	Thuja-2,4(10)-diene	10.334	0.01
6	β -Pinene	11.557	0.71
7	Myrcene	12.771	1.59
8	α -Phellandrene	13.391	1.92
9	δ 3-carene	13.772	0.06
10	1,4-Cineole & α -Terpinene	14.236	0.52
11	p-Cymene	14.977	9.63
12	Limonene	15.22	14.28
13	1,8-Cineole	15.499	62.21
14	(Z)- β -Ocimene	16.045	0.12
15	(E)- β -Ocimene	16.739	0.05
16	γ -Terpinene	17.316	3.9
17	cis-p-Mentha-2,8-dien-1-ol	18.227	0.01
18	cis-Linalool oxide	18.377	0.01
19	Linalool	20.67	0.01
20	Allo-Ocimene	22.003	0.01
21	cis-p-Mentha-2,8-dien-1-ol	22.919	0.02
22	Allo-Ocimene	23.198	0.01
23	δ -Terpineol	25.694	0.06
24	Isopulegol	26.447	0.3
25	Terpinen-4-ol	27.649	0.71
	Total identified		100%



DISCLAIMER: The information contained in this Certificate of Analysis and/or GC/MS is obtained from current and reliable sources. Jade Bloom provides the information contained herein in good faith but makes no representation as to its comprehensiveness or accuracy. Individuals receiving this information must exercise their independent judgment in determining its appropriateness for a particular purpose. As the ordinary or otherwise use(s) of this product is outside the control of Jade Bloom, no representation or warranty, expressed or implied, is made as to the effect(s) of such use(s), (including damage or injury), or the results obtained. Jade Bloom expressly disclaims responsibility as to the ordinary or otherwise use(s). Furthermore, nothing contained herein should be considered as a recommendation by Jade Bloom as to the fitness for any use. The liability Jade Bloom is limited to the value of the goods and does not include any consequential loss. Jade Bloom shall not be liable for any errors or delays in the content, or for any actions taken in reliance thereon. Jade Bloom shall not be responsible for any damages resulting from use of or reliance upon this information. The user of the product is solely responsible for compliance with all laws and regulations applying to the use of the products, including intellectual property rights of third parties. This document is computer automated and is valid without signature. This report may not be published, including online, without the written consent from Jade Bloom