



Jade Bloom

Health, Healing, & Happiness®

Date: March 31, 2022

CERTIFICATE OF ANALYSIS - GC PROFILING

Sample identification: Clary Sage - JB2153-917288

Type: Essential oil

Source: Salvia sclarea

Country of Origin: France

ANALYSIS

Method: 10152018_10:1split.m - Analysis of the composition of an essential oil, or other volatile liquid, by GC-FID, identifications validated by GC-MS.

Analysis date: January 28, 2022

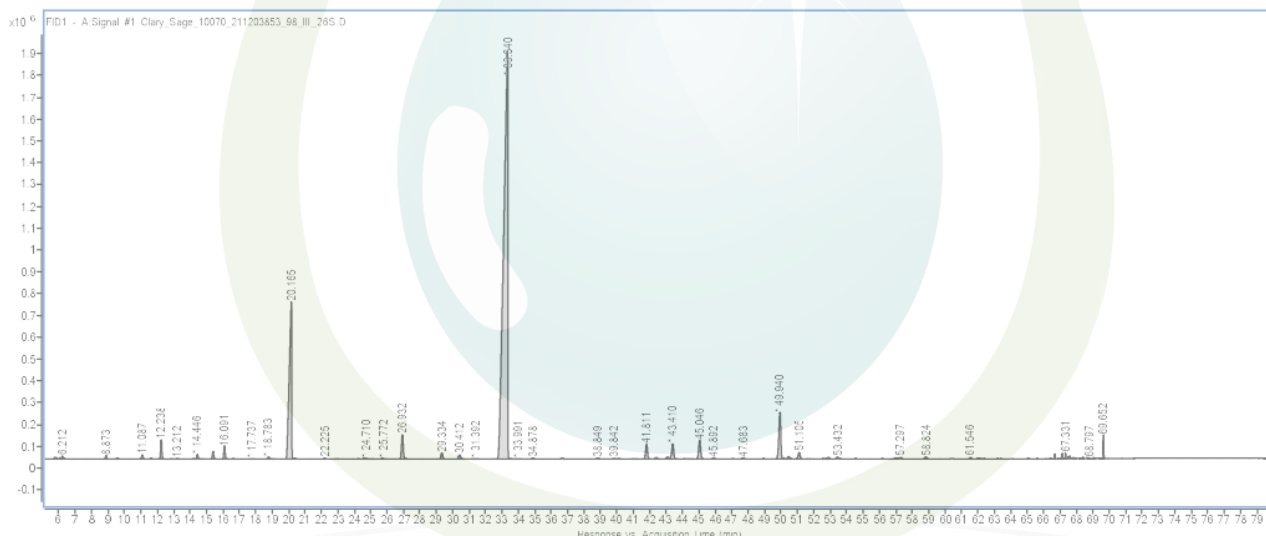
Physical aspect: Clear liquid

CONCLUSION

No adulterant or contaminant has been detected in this oil.

Peak	Compound	RT	Area Sum %
1	(E)-2-Hexenal	5.743	0.03
2	(3Z)-Hexenol	5.844	0.03
3	(2E)-Hexenol	6.089	0.04
4	Hexanol	6.212	0.09
5	α -Pinene	8.873	0.13
6	Camphene	9.568	0.04
7	Sabinene + β -Pinene	11.087	0.22
8	1-Octen-3-ol	11.607	0.03
9	β -Myrcene	12.238	0.91
10	δ -2-Carene	12.883	0.01
11	δ 3-carene	13.212	0.03
12	p-Cymene	14.197	0.02
13	Limonene	14.446	0.22
14	1,8-Cineole	14.607	0.01
15	(Z)- β -Ocimene	15.397	0.38
16	(E)- β -Ocimene	16.091	0.69
17	γ -Terpinene	16.639	0.03
18	cis-Linalool oxide	17.737	0.01
19	α -Terpinolene	18.783	0.13
20	trans-Linalool oxide (furanoid)	18.95	0.01
21	Linalool	20.165	15.45
22	Hotrienol	20.367	0.05
23	Allo-Ocimene	22.225	0.03
24	Camphor	22.832	0.01
25	Borneol	24.71	0.05
26	δ -Terpineol	25.065	0.01
27	Terpinen-4-ol	25.772	0.03
28	α -Terpineol	26.932	1.71
29	unknown	29.334	0.42
30	Nerol	30.412	0.35
31	Neral	31.392	0.01
32	Linalyl acetate	33.34	68.29
33	Geranial	33.991	0.02
34	Bornyl acetate	34.878	0.05
35	Bicycloelemenene	38.849	0.07
36	unknown	39.842	0.04
37	α -Terpinyl acetate	40.144	0.03
38	unknown	41.023	0.02
39	Neryl acetate	41.811	1.1
40	β -Bourbonene	42.407	0.11
41	β -Cubebene	43.072	0.15
42	Geranyl acetate	43.41	1.21
43	α -Gurjunene	44.456	0.03
44	β -Caryophyllene	45.046	1.48
45	β -Copaene	45.892	0.06

46	α -Humulene	47.683	0.08
47	Germacrene D	49.94	3.78
48	β -Selinene	50.197	0.03
49	Geranyl propionate	50.47	0.19
50	Bicyclogermacrene	51.105	0.5
51	α -Muurolene	51.662	0.01
52	γ -Cadinene	52.636	0.04
53	(3E,6E)- α -Farnesene	52.885	0.11
54	δ -Cadinene	53.432	0.1
55	Spathulenol	57.041	0.1
56	Caryophyllene oxide	57.297	0.09
57	unknown	58.824	0.15
58	unknown	61.546	0.1
59	β -Eudesmol	62.01	0.05
60	α -Eudesmol	62.179	0.04
61	unknown	62.37	0.01
62	Sclareoloxide	66.682	0.09
63	m-Camphorene	67.132	0.11
64	p-Camphorene	67.331	0.09
65	Gerany-p-cymene	67.476	0.04
66	Manoyl oxide	67.826	0.02
67	13-epi-Manoyl oxide	67.962	0.01
68	unknown	68.797	0.01
69	Sclareol	69.652	0.39
Total identified			99.35%



DISCLAIMER:

The information contained in this Certificate of Analysis and/or GC/MS is obtained from current and reliable sources. Jade Bloom provides the information contained herein in good faith but makes no representation as to its comprehensiveness or accuracy. Individuals receiving this information must exercise their independent judgment in determining its appropriateness for a particular purpose. As the ordinary or otherwise use(s) of this product is outside the control of Jade Bloom, no representation or warranty, expressed or implied, is made as to the effect(s) of such use(s), (including damage or injury), or the results obtained. Jade Bloom expressly disclaims responsibility as to the ordinary or otherwise use(s). Furthermore, nothing contained herein should be considered as a recommendation by Jade Bloom as to the fitness for any use. The liability Jade Bloom is limited to the value of the goods and does not include any consequential loss. Jade Bloom shall not be liable for any errors or delays in the content, or for any actions taken in reliance thereon. Jade Bloom shall not be responsible for any damages resulting from use of or reliance upon this information. The user of the product is solely responsible for compliance with all laws and regulations applying to the use of the products, including intellectual property rights of third parties. This document is computer automated and is valid without signature.. This report may not be published, including online, without the written consent from Jade Bloom