



JADE BLOOM

HEALTH, HEALING & HAPPINESS
WWW.JADEBLOOM.COM

GC/MS & COA

Clary Sage Oil – 210396148

Salvia sclarea

ANALYSIS

Type: Essential oil

Source: Herb

Analysis date: December 2, 2020

Physical aspect: Clear liquid

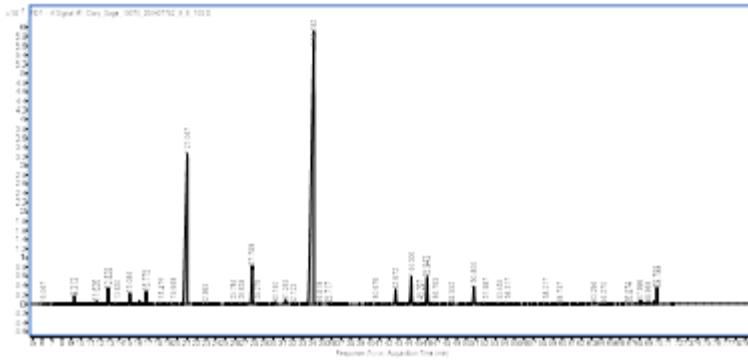
CONCLUSION

No adulterant, contaminant or diluent has been detected using this method. This oil nearly complies with ISO standard for Clary Sage Oil.

Physico-Chemical Properties	Specifications	Results
<u>Specific Gravity at 20° C</u>	0.8938	Complies
<u>Refractive Index at 20° C</u>	1.458	Complies
<u>Optical Rotation at 20° C</u>	-14.30	Complies

Peak	Compound	RT	Area Sum %
1	(E)-2-Hexenal	6.047	0.01
2	(3Z)-Hexenol	6.154	0.01
3	(2E)-Hexenol	6.553	0.01
4	Hexanol	6.668	0.01
5	α -Pinene	9.313	0.42
6	Camphene	10.052	0.01
7	Sabinene + β -Pinene	11.626	0.16
8	1-Octen-3-ol	12.137	0.02
9	β -Myrcene	12.828	0.92
10	δ -2-Carene	13.395	0.04
11	δ 3-carene	13.83	0.01
12	p-Cymene	14.832	0.03
13	Limonene	15.084	0.63
14	1,8-Cineole	15.246	0.02
15	(Z)- β -Ocimene	16.071	0.2
16	(E)- β -Ocimene	16.775	0.81
17	γ -Terpinene	17.325	0.04
18	cis-Linalool oxide	18.425	0.05
19	α -Terpinolene	19.507	0.02
20	trans-Linalool oxide (furanoid)	19.649	0.07
21	Linalool	21.047	24.48
22	Allo-Ocimene	22.993	0.02
23	Camphor	23.687	0.02
24	Borneol	25.502	0.02
25	δ -Terpineol	25.784	0.02
26	Terpinen-4-ol	26.639	0.03
27	α -Terpineol	27.789	3.47
28	unknown	28.276	0.03
29	unknown	30.14	0.14
30	Nerol	31.243	0.39
31	Neral	32.123	0.02
32	Linalyl acetate	34.192	58.13
33	Geranial	34.819	0.02
34	Bornyl acetate	35.717	0.08
35	unknown	40.676	0.06
36	α -Terpinyl acetate	40.987	0.01
37	unknown	41.879	0.03
38	Neryl acetate	42.672	1.28
39	β -Bourbonene	43.266	0.03
40	β -Cubebene	43.928	0.05
41	Geranyl acetate	44.3	2.61
42	α -Gurjunene	45.297	0.03
43	β -Caryophyllene	45.943	2.58
44	β -Copaene	46.763	0.05
45	α -Humulene	48.552	0.05

46	Germacrene D	50.8	1.68
47	β -Selinene	51.085	0.02
48	Geranyl propionate	51.349	0.04
49	Bicyclgermacrene	51.987	0.12
50	α -Muurolene	52.544	0.02
51	γ -Cadinene	53.455	0.03
52	δ -Cadinene	54.317	0.06
53	unknown	54.515	0.03
54	Spathulenol	57.948	0.04
55	Caryophyllene oxide	58.217	0.07
56	unknown	59.737	0.06
57	β -Eudesmol	62.597	0.02
58	α -Eudesmol	62.732	0.02
59	unknown	62.87	0.01
60	unknown	63.294	0.07
61	unknown	64.27	0.03
62	Sclareoloxide	66.874	0.02
63	Manoyl oxide	67.996	0.07
64	13-epi-Manoyl oxide	68.193	0.05
65	unknown	68.949	0.04
66	unknown	69.483	0.05
67	Sclareol	69.799	0.35
	Total identified		99.45%



DISCLAIMER:

The information contained in this Certificate of Analysis and/or GC/MS is obtained from current and reliable sources. Jade Bloom provides the information contained herein in good faith but makes no representation as to its comprehensiveness or accuracy. Individuals receiving this information must exercise their independent judgment in determining its appropriateness for a particular purpose. As the ordinary or otherwise use(s) of this product is outside the control of Jade Bloom, no representation or warranty, expressed or implied, is made as to the effect(s) of such use(s), (including damage or injury), or the results obtained. Jade Bloom expressly disclaims responsibility as to the ordinary or otherwise use(s). Furthermore, nothing contained herein should be considered as a recommendation by Jade Bloom as to the fitness for any use. The liability Jade Bloom is limited to the value of the goods and does not include any consequential loss. Jade Bloom shall not be liable for any errors or delays in the content, or for any actions taken in reliance thereon. Jade Bloom shall not be responsible for any damages resulting from use of or reliance upon this information. The user of the product is solely responsible for compliance with all laws and regulations applying to the use of the products, including intellectual property rights of third parties. This document is computer automated and is valid without signature