



# Jade Bloom

Health, Healing, & Happiness®

**Date:** June 24th, 2020

## **CERTIFICATE OF ANALYSIS - GC PROFILING**

**Sample identification:** Cassia - JB2044-384983

**Type:** Essential oil

**Source:** Cinnamomum cassia

### **ANALYSIS**

**Method:** 10152018\_10:1split.m - Analysis of the composition of an essential oil, or other volatile liquid, by GC-FID, identifications validated by GC-MS.

**Analysis date:** June 23rd, 2020

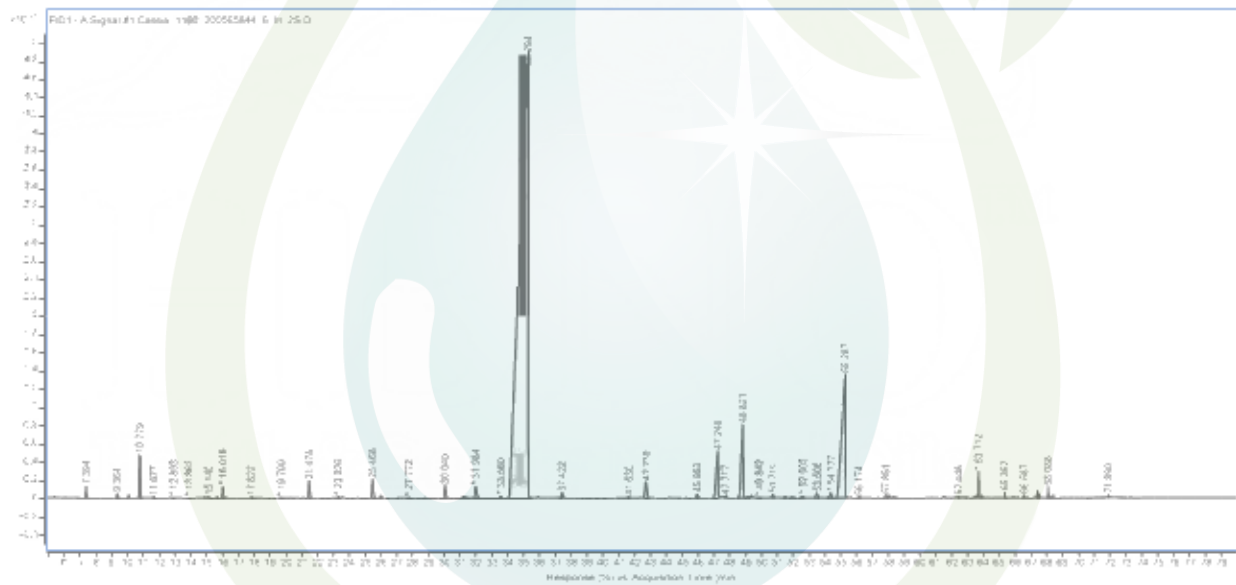
**Physical aspect:** Light yellow liquid

### **CONCLUSION**

No adulterant, contaminant or diluent has been detected using this method. The oil nearly complies with ISO specifications.

Peak	Compound	RT	Area Sum %
1	Styrene	7.394	0.19
2	$\alpha$ -Pinene	9.364	0.09
3	Camphene	10.092	0.06
4	Benzaldehyde	10.779	0.87
5	$\beta$ -Pinene	11.677	0.03
6	Benzofuran	12.893	0.01
7	Octanal	13.862	0.01
8	p-Cymene	14.884	0.03
9	Limonene	15.14	0.04
10	1,8-Cineole	15.297	0.01
11	Benzyl alcohol	15.652	0.04
12	Salicylaldehyde	16.016	0.3
13	Acetophenone	17.822	0.03
14	o-Guaiacol (o-Hydroxyanisole)	19.7	0.04
15	Phenylethyl Alcohol	21.478	0.51
16	ortho-vinylanisole (2-vinyl-anisole)	23.326	0.08
17	Hydrocinnamic aldehyde	25.468	0.63
18	3-Methyl-benzofuran	26.016	0.09
19	$\alpha$ -Terpineol	27.772	0.02
20	(Z)-Cinnamaldehyde	30.04	0.44
21	Hydrocinnamyl alcohol	31.213	0.13
22	o-Anisaldehyde	31.984	0.5
23	Phenyl ethyl acetate	33.56	0.09
24	(E)-Cinnamaldehyde	35.294	77.56
25	(E)-Cinnamyl alcohol	37.422	0.18
26	$\alpha$ -Ylangene	41.63	0.06
27	$\alpha$ -Copaene	42.73	0.73
28	$\beta$ -Caryophyllene	45.953	0.14
29	Coumarin	47.248	2.16
30	trans- $\alpha$ -Bergamotene	47.717	0.07
31	(E)-Cinnamyl acetate	48.821	3.19
32	Aromandendrene	49.161	0.06
33	(E)- $\beta$ -Farnesene	49.842	0.02
34	$\gamma$ -Muurolene	50.719	0.11
35	Ar-Curcumene	51.506	0.06
36	Viridiflorene	51.954	0.08
37	Amorphene<math>\alpha</math>->	52.605	0.1
38	$\beta$ -Bisabolene	53.506	0.19
39	trans-Calamenene	54.259	0.03
40	$\delta$ -Cadinene	54.377	0.19
41	(E)-o-Methoxycinnamaldehyde	55.287	9.67

42	(E)- $\alpha$ -Bisabolene	56.174	0.05
43	Nerolidol	57.851	0.12
44	Spathulenol	58.037	0.1
45	Caryophyllene oxide	58.321	0.07
46	$\tau$ -Cadinol	62.448	0.04
47	$\alpha$ -Cadinol	62.91	0.01
48	unknown	63.511	0.03
49	unknown	63.712	0.35
50	$\alpha$ -Bisabolol	63.929	0.04
51	Benzyl Benzoate	65.362	0.06
52	Phenylethyl benzoate	66.587	0.03
53	unknown	67.407	0.07
54	unknown	67.518	0.06
55	unknown	68.088	0.09
56	unknown	68.204	0.02
57	unknown	68.422	0.03
58	unknown	71.89	0.02
	Total identified		99.33%



**DISCLAIMER:**

The information contained in this Certificate of Analysis and/or GC/MS is obtained from current and reliable sources. Jade Bloom provides the information contained herein in good faith but makes no representation as to its comprehensiveness or accuracy. Individuals receiving this information must exercise their independent judgment in determining its appropriateness for a particular purpose. As the ordinary or otherwise use(s) of this product is outside the control of Jade Bloom, no representation or warranty, expressed or implied, is made as to the effect(s) of such use(s), (including damage or injury), or the results obtained. Jade Bloom expressly disclaims responsibility as to the ordinary or otherwise use(s). Furthermore, nothing contained herein should be considered as a recommendation by Jade Bloom as to the fitness for any use. The liability Jade Bloom is limited to the value of the goods and does not include any consequential loss. Jade Bloom shall not be liable for any errors or delays in the content, or for any actions taken in reliance thereon. Jade Bloom shall not be responsible for any damages resulting from use of or reliance upon this information. The user of the product is solely responsible for compliance with all laws and regulations applying to the use of the products, including intellectual property rights of third parties. This document is computer automated and is valid without signature. This report may not be published, including online, without the written consent from Jade Bloom