



# Jade Bloom

Health, Healing, & Happiness®

**Date:** May 5, 2020.

## **CERTIFICATE OF ANALYSIS - GC PROFILING**

**Sample identification:** Blue Tansy- JB2003-429853

**Type:** Essential oil

**Source:** Tanacetum annuum L.

### **ANALYSIS**

Method: 10152018\_10:1split.m - Analysis of the composition of an essential oil, or other volatile liquid, by GC-FID, identifications validated by GC-MS.

**Analysis date:** May 4, 2020.

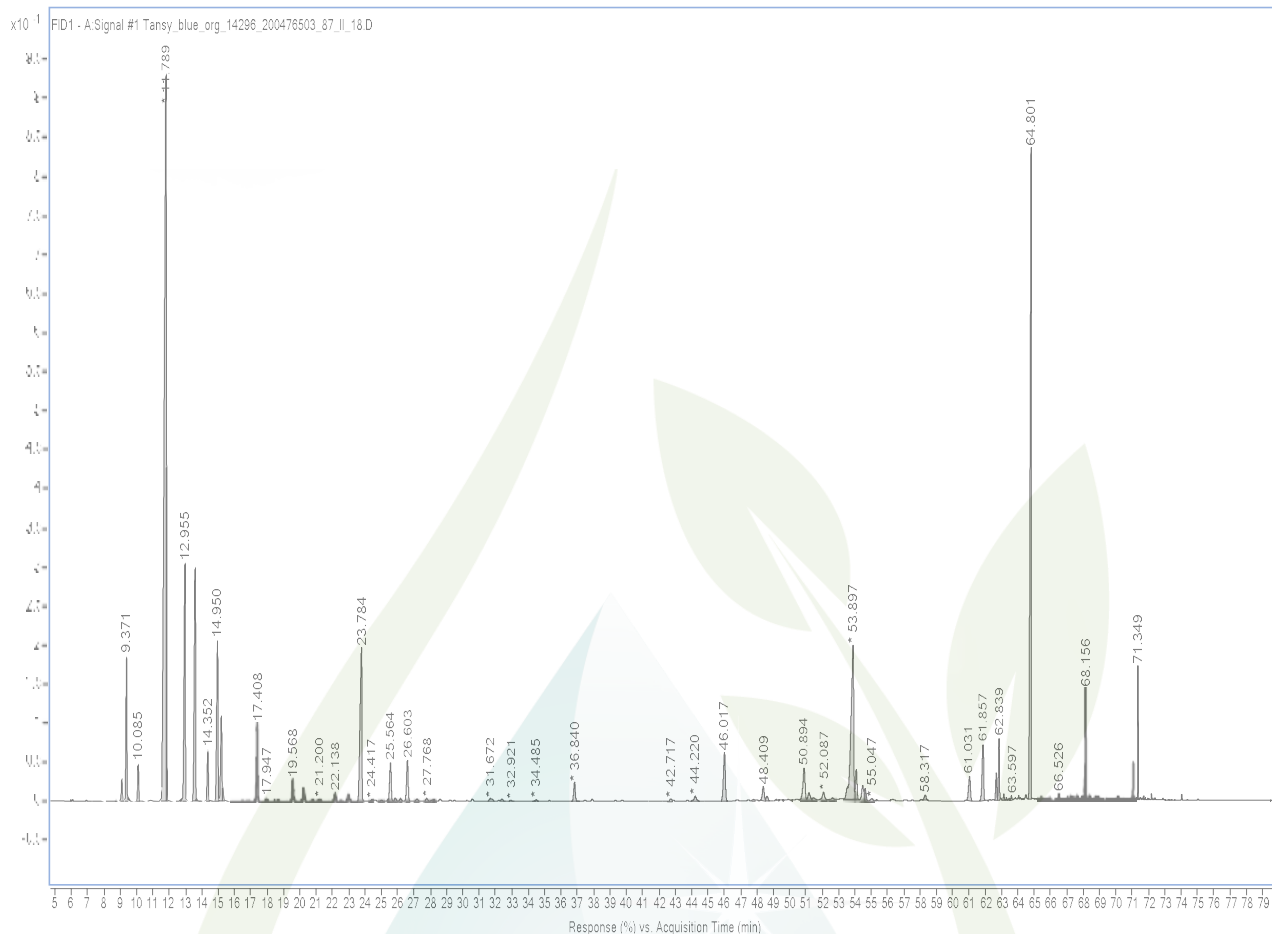
Physical aspect: Blue liquid

### **CONCLUSION**

No adulterant, contaminant or diluent has been detected in this oil using this method.

Peak	Compound	RT	Area Sum %
1	Tricyclene	8.737	0.04
2	$\alpha$ -Thujene	9.083	0.47
3	$\alpha$ -Pinene	9.371	2.72
4	Camphene	10.085	0.75
5	Thuja-2,4(10)-diene	10.438	0.01
6	Sabinene	11.789	28.3
7	$\beta$ -Pinene	11.833	2.37
8	6-Methyl-5-heptene-2-one	12.718	0.02
9	$\beta$ -Myrcene	12.955	5.62
10	$\alpha$ -Phellandrene	13.58	5.61
11	Octanal	13.684	0.07
12	$\delta$ 3-carene	13.879	0.02
13	$\alpha$ -Terpinene	14.352	1.13
14	o-Cymene	14.95	3.94
15	Limonene	15.184	2.08
16	1,8-Cineole	15.278	0.24
17	$\gamma$ -Terpinene	17.408	1.86
18	cis-Sabinene hydrate	17.947	0.08
19	$\alpha$ -Terpinolene	19.568	0.57
20	Epoxyterpinene<6,7->	20.232	0.38
21	Linalool	20.769	0.07
22	unknown	21.2	0.09
23	trans-p-2,8-Menthadien-1-ol	22.138	0.24
24	$\alpha$ -Campholenal	22.501	0.03
25	4-Acetyl-1-methylcyclohexene	22.938	0.23
26	Camphor	23.784	5.35
27	unknown	24.417	0.06
28	Sabina ketone	25.005	0.04
29	Borneol	25.564	1.12
30	$\alpha$ -Phellandrene-8-ol	25.857	0.08
31	cis-Dihydro carvone	26.179	0.08
32	Terpinen-4-ol	26.603	1.15
33	unknown	27.174	0.07
34	$\alpha$ -Terpineol	27.768	0.09
35	Myrtenal	28.095	0.02
36	Myrtenol	28.222	0.02
37	Cuminal	31.672	0.16
38	Carvotanacetone	32.376	0.07
39	Piperitone	32.921	0.03
40	unknown	34.485	0.05
41	Thymol	36.84	0.55
42	$\alpha$ -Copaene	42.717	0.1
43	$\beta$ -Elemene	44.22	0.21

44	$\beta$ -Caryophyllene	46.017	1.71
45	trans- $\alpha$ -Bergamotene	47.803	0.05
46	$\alpha$ -Cedrene	48.409	0.49
47	$\alpha$ -Humulene	48.636	0.15
48	Germacrene D	50.894	1.17
49	$\beta$ -Selinene	51.192	0.21
50	Valencene	51.457	0.09
51	Germacrene B	52.087	0.3
52	$\alpha$ -Muurolene	52.643	0.06
53	3,6-Dihydrochamazulene	53.897	7.85
54	2,5,8-Trimethyl-1-naphthol	54.092	0.87
55	$\delta$ -Cadinene	54.482	0.53
56	$\beta$ -Sesquiphellandrene	54.632	0.37
57	Dihydrochamazulene isomer	55.047	0.1
58	Caryophyllene oxide	58.317	0.2
59	Dihydrochamazulene isomer	61.031	0.84
60	Dihydrochamazulene isomer	61.857	1.59
61	$\beta$ -Eudesmol	62.666	0.58
62	Dihydrochamazulene isomer	62.839	1.11
63	unknown	63.127	0.1
64	unknown	63.29	0.05
65	unknown	63.597	0.06
66	Chamazulene	64.801	13.14
67	unknown	66.526	0.05
68	unknown	68.09	0.18
69	unknown	68.156	0.91
70	unknown	68.405	0.04
71	unknown	68.75	0.04
72	unknown	68.905	0.02
73	unknown	68.995	0.02
74	unknown	71.036	0.2
75	unknown	71.349	0.73
	<b>Total identified</b>		<b>97.33%</b>



**DISCLAIMER:**

The information contained in this Certificate of Analysis and/or GC/MS is obtained from current and reliable sources. Jade Bloom provides the information contained herein in good faith but makes no representation as to its comprehensiveness or accuracy. Individuals receiving this information must exercise their independent judgment in determining its appropriateness for a particular purpose. As the ordinary or otherwise use(s) of this product is outside the control of Jade Bloom, no representation or warranty, expressed or implied, is made as to the effect(s) of such use(s), (including damage or injury), or the results obtained. Jade Bloom expressly disclaims responsibility as to the ordinary or otherwise use(s). Furthermore, nothing contained herein should be considered as a recommendation by Jade Bloom as to the fitness for any use. The liability Jade Bloom is limited to the value of the goods and does not include any consequential loss. Jade Bloom shall not be liable for any errors or delays in the content, or for any actions taken in reliance thereon. Jade Bloom shall not be responsible for any damages resulting from use of or reliance upon this information. The user of the product is solely responsible for compliance with all laws and regulations applying to the use of the products, including intellectual property rights of third parties. This document is computer automated and is valid without signature. This report may not be published, including online, without the written consent from Jade Bloom