



Jade Bloom

Health, Healing, & Happiness®

GCMS ANALYSIS

PRODUCT NAME: AMYRIS ESSENTIAL OIL 11311

Peak	RT (min)	Compound name	%
1	17,11	GEIJERENE	0,01
2	24,43	FURFURAL	0,02
3	25,27	delta-ELEMENE	0,01
4	26,62	SESQUITERPENE	0,02
5	27,30	1,3,7,7-TETRAMETHYL-BICYCLO-3-DECENE	0,10
6	28,07	ALIPHATIC ESTER	0,10
7	28,75	AROMATIC COMPOUND	0,04
8	28,98	SESQUITERPENE	0,18
9	29,08	SESQUITERPENE	0,09
10	29,66	SESQUITERPENE	0,01
11	30,05	SESQUITERPENE	0,04
12	30,42	BERGAMOTENE ISOMERE	0,02
13	31,02	alpha-CEDRENE	0,05
14	31,21	MODHEPHENE	0,13
15	31,33	alpha-SANTALENE	0,19
16	31,66	SESQUITERPENE	0,03
17	31,98	SESQUITERPENE	0,07
18	32,13	alpha-trans-BERGAMOTENE	0,05
19	32,38	beta-ELEMENE	0,68
20	32,72	beta-CARYOPHYLLENE	0,38
21	33,12	GURJUNENE ISOMER	0,15
22	33,43	SESQUITERPENE	0,10
23	34,98	epi-beta-SANTALENE	0,09
24	35,20	GERMACRENE A	0,50
25	35,25	ARISTOLENE ISOMER	0,40
26	35,37	beta-SANTALENE	0,13
27	35,84	SESQUITERPENE	0,12
28	36,00	CURCUMENE ISOMER	0,59
29	36,44	alpha-ACORADIENE	1,28
30	36,96	alpha-HUMULENE	0,20

GCMS ANALYSIS

PRODUCT NAME: AMYRIS ESSENTIAL OIL 11311

Peak	RT (min)	Compound name	%
31	37,25	SESQUITERPENE	0,57
32	37,46	gamma-SELINENE ISOMER	2,16
33	37,65	E-beta-FARNESENE	0,13
34	37,72	SESQUITERPENE	0,23
35	37,92	beta-ACORADIENE	0,36
36	38,23	gamma-SELINENE	1,21
37	38,30	CALARENE	0,65
38	38,36	gamma-CURCUMENE	0,50
39	38,71	SESQUITERPENE	0,06
40	38,92	SESQUITERPENE	0,26
41	39,24	SESQUITERPENE	0,15
42	39,60	CADINENE ISOMER	0,08
43	39,98	beta-DIHYDRO-AGAROFURAN	2,16
44	40,02	VALENCENE	3,24
45	40,06	alpha-DIHYDRO-AGAROFURAN	1,04
46	40,27	alpha-SELINENE	1,28
47	40,41	alpha-ZINGIBERENE	1,16
48	40,72	beta-BISABOLENE	1,22
49	40,93	SESQUITERPENE	0,06
50	41,12	SESQUITERPENE	0,03
51	41,34	AROMATIC COMPOUND	0,10
52	41,56	beta-CURCUMENE	0,21
53	42,36	7-epi-alpha-SELINENE	1,16
54	42,71	alpha-DIHYDRO-AGAROFURAN ISOMER	0,73
55	42,78	delta-SELINENE	1,30
56	42,99	beta-SESQUIPELLANDRENE	1,23
57	43,12	alpha-CURCUMENE	1,18
58	43,50	alpha-PANASINSEN	5,23
59	44,22	SESQUITERPENE	0,09
60	44,73	AROMATIC COMPOUND	0,09

GCMS ANALYSIS

PRODUCT NAME: AMYRIS ESSENTIAL OIL 11311

Peak	RT (min)	Compound name	%
61	45,20	CADINA-1,4-DIENE	0,11
62	45,43	SESQUITERPENOL	0,10
63	45,75	SESQUITERPENOL	0,03
64	46,56	AROMATIC COMPOUND	0,03
65	47,82	AROMATIC COMPOUND	0,04
66	48,48	AROMATIC COMPOUND	0,03
67	49,31	alpha-AGAROFURAN	0,33
68	50,50	SESQUITERPENOL	0,06
69	50,69	SESQUITERPENIC EPOXIDE	0,04
70	53,19	EUDESMATRIENE ISOMER	0,05
71	53,42	MONOCYCLONEROLIDOL	0,22
72	53,59	MONOCYCLONEROLIDOL ISOMER	0,21
73	53,82	CARYOPHYLLENE EPOXIDE	0,03
74	54,17	PHENOLIC COMPOUND	0,18
75	54,28	AROMATIC COMPOUND	0,06
76	54,61	SESQUITERPENOL	0,05
77	54,87	alpha-ACORENOL	0,52
78	55,72	alpha-PHOTOSANTALOL A	0,08
79	56,23	SESQUITERPENOL	0,17
80	56,49	SESQUITERPENOL	0,06
81	56,64	SESQUITERPENOL	0,12
82	57,52	NEROLIDOL	0,33
83	58,12	SESQUITERPENOL	0,24
84	58,52	SESQUITERPENOL	0,13
85	58,70	SESQUITERPENOL	0,10
86	59,59	ELEMOL	7,16
87	59,89	AROMATIC COMPOUND	0,06
88	60,03	GUAIOL	0,13
89	60,30	SESQUITERPENOL	0,07
90	60,66	10-epi-gamma-EUDESMOL	4,86

GCMS ANALYSIS

PRODUCT NAME: AMYRIS ESSENTIAL OIL 11311

Peak	RT (min)	Compound name	%
91	60,70	ROSIFOLIOL	0,23
92	60,94	SPATHULENOL	0,08
93	61,10	CEDROL	0,09
94	61,45	beta-SESQUIPELLANDROL	0,09
95	61,75	EUDESMOL ISOMER	0,05
96	61,94	SESQUITERPENOL	0,38
97	62,19	EUDESMOL ISOMER	0,10
98	62,53	SESQUITERPENOL	0,24
99	62,72	SESQUITERPENOL	0,58
100	63,17	EUDESMOL ISOMER	0,27
101	63,41	SESQUITERPENOL	0,37
102	63,96	gamma-EUDESMOL	9,63
103	64,22	AGAROSPIROL	0,39
104	64,34	SESQUITERPENOL	0,09
105	64,62	SESQUITERPENOL	0,39
106	64,71	HINESOL	0,15
107	65,09	AGAROSPIROL ISOMER	0,20
108	65,35	SESQUITERPENOL	1,19
109	65,54	SESQUITERPENOL	0,38
110	66,27	VALERIANOL	17,48
111	66,37	4-HYDROXY-DIHYDRO-alpha-AGAROFURAN	0,41
112	66,53	alpha-EUDESMOL	3,29
113	66,80	7-epi-alpha-EUDESMOL	6,25
114	66,93	beta-EUDESMOL	3,57
115	67,15	SESQUITERPENOL	0,10
116	67,45	AROMATIC COMPOUND	0,19
117	67,75	EUDESMOL ISOMER	0,08
118	67,93	SESQUITERPENOL	0,17
119	68,46	SESQUITERPENONE Mw=218	0,28
120	68,88	COMPOUND Mw=224	0,06

GCMS ANALYSIS

PRODUCT NAME: AMYRIS ESSENTIAL OIL 11311

Peak	RT (min)	Compound name	%
121	69,15	COMPOUND Mw=238	0,18
122	69,39	SESQUITERPENOL	0,08
123	69,62	AROMATIC COMPOUND	0,15
124	69,81	SESQUITERPENIC EPOXIDE	0,10
125	70,25	SESQUITERPENOL	0,22
126	70,59	SESQUITERPENOL	0,08
127	70,99	SESQUITERPENOL	0,06
128	71,32	SESQUITERPENOL	0,40
129	71,52	SESQUITERPENIC EPOXIDE	0,06
130	71,76	SESQUITERPENIC EPOXIDE	0,27
131	72,25	COMPOUND Mw=238	0,09
132	72,52	FARNESOL	0,07
133	72,70	ZINGIBERENOL	0,06
134	73,04	SESQUITERPENIC EPOXIDE	0,24
135	73,44	AROMATIC COMPOUND	0,13
136	74,07	SESQUITERPENOL	0,05
137	74,26	SESQUITERPENIC EPOXIDE	0,07
138	76,21	SESQUITERPENIC EPOXIDE	0,06
139	76,67	SESQUITERPENOL	0,16
140	78,51	AROMATIC COMPOUND	0,05
141	78,91	DRIMENOL	1,05
142	79,58	NOOTKATONE	0,04
143	81,76	SESQUITERPENOL	0,02
144	83,83	AROMATIC COMPOUND	0,03
145	87,45	PHENOLIC COMPOUND	0,03
146	88,66	ZINGERONE	0,03
147	91,77	PHENOLIC COMPOUND	0,02
148	93,00	COMPOUND Mw=220	0,02
149	94,55	COMPOUND Mw=238	0,03
150	96,07	SESQUITERPENONE Mw=218	0,03

GCMS ANALYSIS

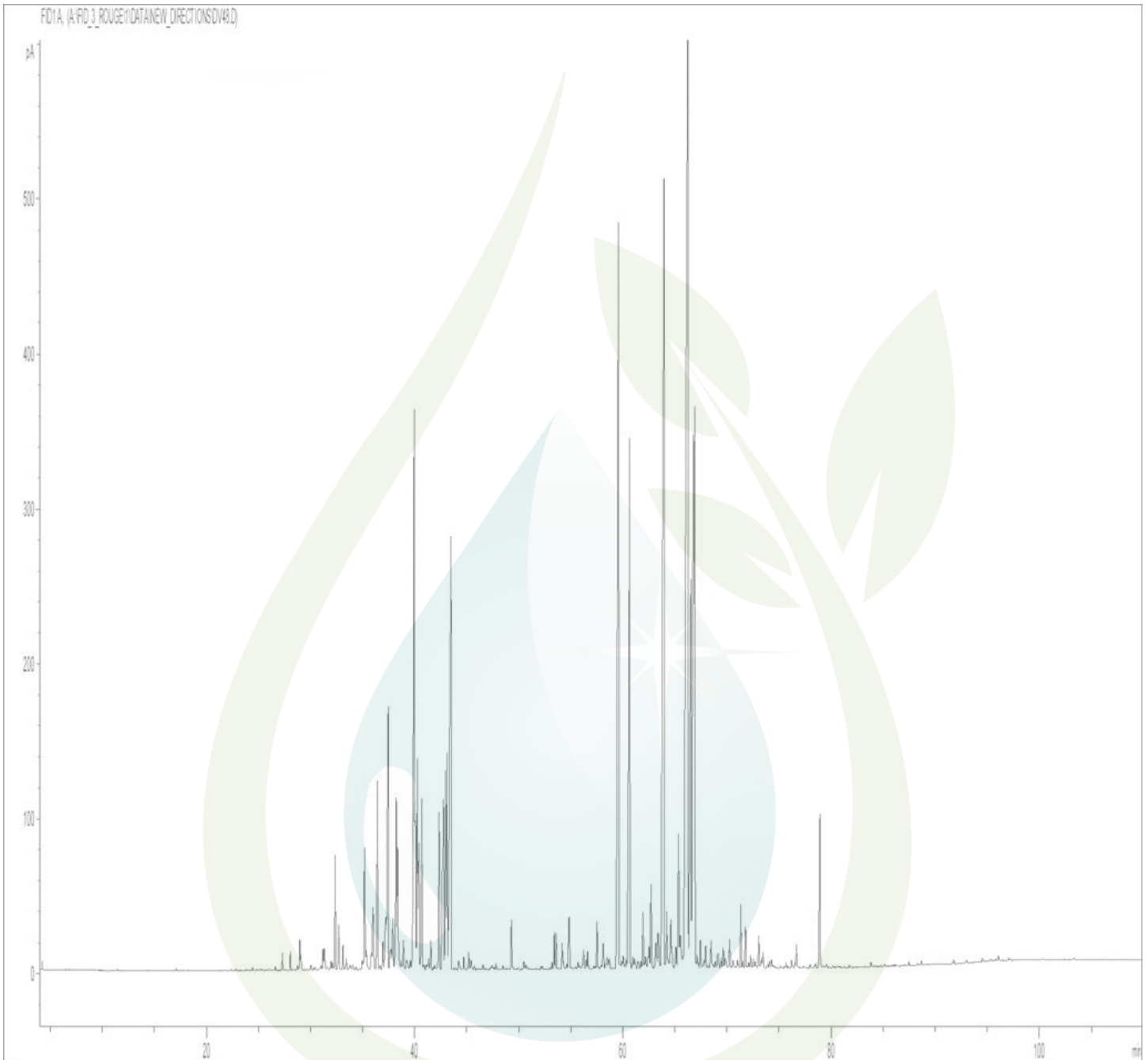
PRODUCT NAME: AMYRIS ESSENTIAL OIL 11311

Peak	RT (min)	Compound name	%
151	97,07	AROMATIC COMPOUND	0,02
152	103,32	AROMATIC COMPOUND	0,02
		TOTAL	99,95



GCMS ANALYSIS

PRODUCT NAME: AMYRIS ESSENTIAL OIL 11311



DISCLAIMER:

The information contained in this Certificate of Analysis and/or GC/MS is obtained from current and reliable sources. Jade Bloom provides the information contained herein in good faith but makes no representation as to its comprehensiveness or accuracy. Individuals receiving this information must exercise their independent judgment in determining its appropriateness for a particular purpose. As the ordinary or otherwise use(s) of this product is outside the control of Jade Bloom, no representation or warranty, expressed or implied, is made as to the effect(s) of such use(s), (including damage or injury), or the results obtained. Jade Bloom expressly disclaims responsibility as to the ordinary or otherwise use(s). Furthermore, nothing contained herein should be considered as a recommendation by Jade Bloom as to the fitness for any use. The liability Jade Bloom is limited to the value of the goods and does not include any consequential loss. Jade Bloom shall not be liable for any errors or delays in the content, or for any actions taken in reliance thereon. Jade Bloom shall not be responsible for any damages resulting from use of or reliance upon this information. The user of the product is solely responsible for compliance with all laws and regulations applying to the use of the products, including intellectual property rights of third parties. This document is computer automated and is valid without signature. This report may not be published, including online, without the written consent from Jade Bloom