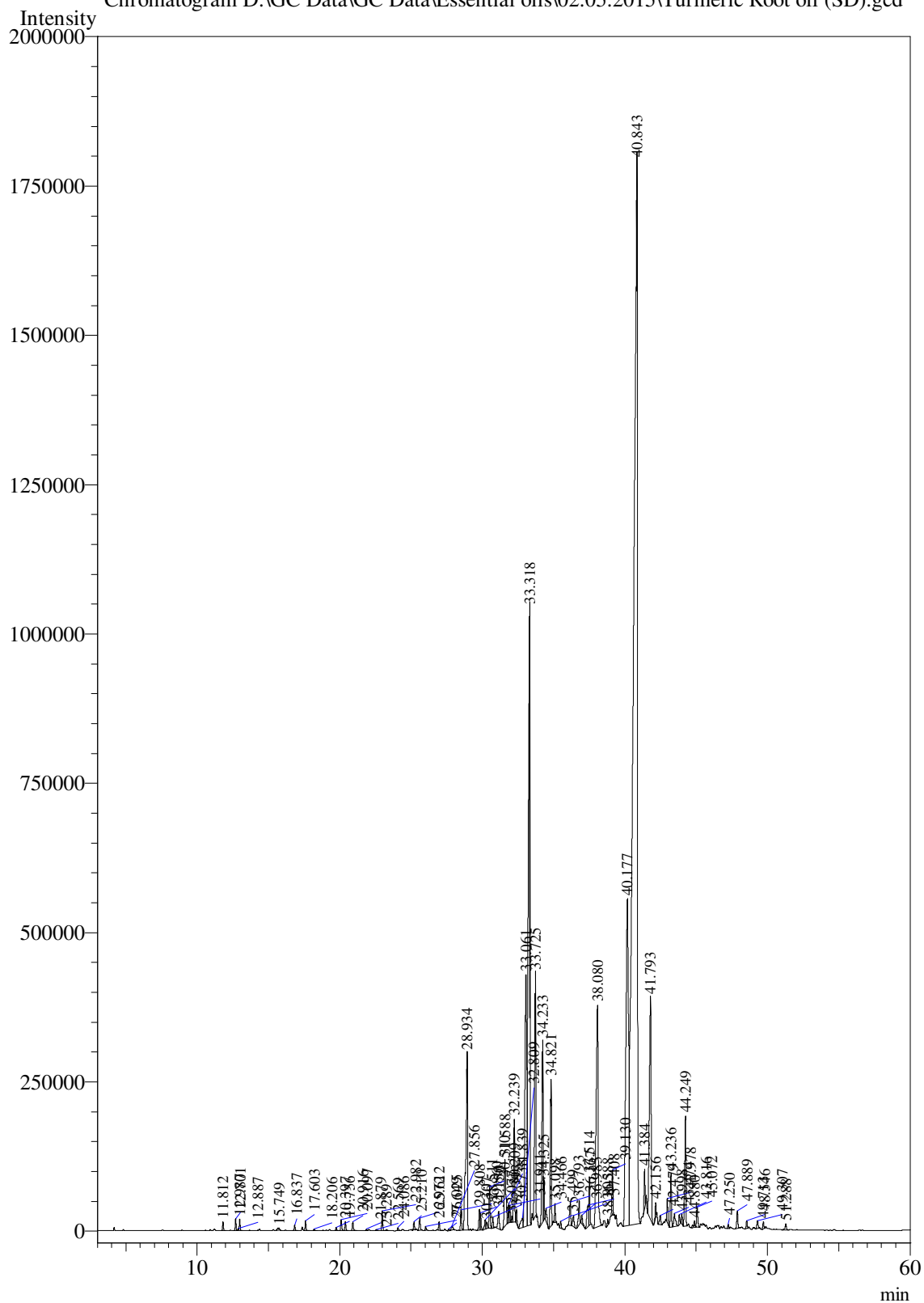


Sample Information

Analysis Date & Time : 5/2/2015 1:30:17 PM
User Name : \$Admn.\$
Sample Name : Turmeric Root oil (SD)
Sample Type : \$Organic\$
Data Name : D:\GC Data\GC Data\Essential oils\02.05.2015\Turmeric Root oil (SD).gcd

Chromatogram D:\GC Data\GC Data\Essential oils\02.05.2015\Turmeric Root oil (SD).gcd



Peak Table - Channel 1

Peak#	Ret.Time	Area	Area%	Name
1	11.812	56880	0.0727	Alpha-phellandrene
2	12.701	78650	0.1005	Para-Cymene
3	12.887	14036	0.0179	Limonene
4	12.987	79783	0.1020	Eucalyptol
5	15.749	35028	0.0448	p-Cymenene
6	16.837	41697	0.0533	Oxalic acid, dicyclohexyl ester
7	17.603	73491	0.0939	Limona ketone
8	18.206	15195	0.0194	Camphor
9	19.756	23862	0.0305	Terpinen-4-ol
10	20.097	86343	0.1103	Melilotal
11	20.397	67095	0.0857	Alpha-terpineol
12	20.916	75975	0.0971	cis-Sabinol
13	21.879	12506	0.0160	Dictamnol 8-epi
14	22.569	6290	0.0080	Trans-sabinol
15	22.982	150092	0.1918	Carvotanacetone
16	23.289	9118	0.0117	Piperitone
17	24.086	25115	0.0321	2,4-Dimethylphenethyl alcohol
18	25.210	67085	0.0857	Thymol
19	25.612	111974	0.1431	Carvacrol
20	26.025	27785	0.0355	2-Methoxy-4-vinylphenol
21	26.972	61022	0.0780	Dictamnol 8-epi
22	27.649	14277	0.0182	2,3-Nonadiene
23	27.856	50858	0.0650	Eugenol
24	28.511	170501	0.2179	Dictamnol
25	28.934	2266474	2.8962	4-Methyl-4-phenyl-2-pentanone
26	29.808	177986	0.2274	Beta-Atlantol
27	29.860	136676	0.1747	Megastigma-3,7(E),9-triene
28	30.209	100695	0.1287	Cedr-8-ene
29	30.307	60121	0.0768	Delta-Elemene
30	30.510	341901	0.4369	Beta-caryophyllene
31	30.738	84504	0.1080	Cis-lanceol acetate
32	31.150	204347	0.2611	trans-alpha-Bergamotene
33	31.588	828256	1.0584	Beta-Bisabolonal
34	31.839	128062	0.1636	Cadina-1,4-diene trans
35	31.941	138055	0.1764	Alpha-humulene
36	32.077	39867	0.0509	Guaia-3,10(14)-diene 9,11-epoxy
37	32.239	884407	1.1301	Amorpha-4,11-diene
38	32.393	105034	0.1342	Beta-Acoradiene
39	32.809	176236	0.2252	Italicene
40	33.061	3688602	4.7135	Alpha-caryophyllene
41	33.318	8654005	11.0586	Ar-curcumene
42	33.725	2247503	2.8720	Alpha-Zingiberene
43	34.233	1667723	2.1311	Beta-Bisabolene
44	34.325	279383	0.3570	Beta-curcumene
45	34.466	136128	0.1740	geranyl-alpha-terpinene

Peak#	Ret.Time	Area	Area%	Name
46	34.821	1249625	1.5968	Beta-Sesquiphellandrene
47	35.098	133882	0.1711	Bisabolene (E)-gamma
48	35.499	51804	0.0662	Bisabolene (Z)-alpha
49	36.167	231417	0.2957	Humulene epoxide I
50	36.388	130775	0.1671	Humulene epoxide II
51	36.793	228296	0.2917	Sesquithujene 7-epi
52	36.985	83354	0.1065	Isolongifolene, 4,5,9,10-dehydro-
53	37.408	301361	0.3851	Biotol beta
54	37.514	405721	0.5185	Artemisia ketone
55	38.080	3596039	4.5952	Cymol
56	38.805	49094	0.0627	Valerianol
57	39.130	357858	0.4573	Tumerone
58	40.177	7356558	9.4006	Atlantone (Z)-gamma
59	40.843	34016471	43.4682	Ar-Tumerone
60	41.384	285949	0.3654	Atlantone (E)-gamma
61	41.793	3158941	4.0367	Curlone
62	42.156	105373	0.1347	Longipinanol
63	42.479	98279	0.1256	7-Methylindan-1-one
64	42.978	196465	0.2511	Bisabolone-6S,7R
65	43.236	455754	0.5824	2,5-Octadiene, 3,4,5,6-tetramethyl
66	43.474	177859	0.2273	Xanthorhizol
67	43.816	79969	0.1022	7-Methylindan-1-one
68	43.998	77520	0.0991	Pentadecane, 2-methyl-2-phenyl-
69	44.249	1002247	1.2807	Atlantone trans-alpha
70	44.880	76182	0.0973	Geranyl tiglate
71	45.072	190246	0.2431	Isobornyl acrylate
72	47.250	33020	0.0422	Nopinone
73	47.889	158569	0.2026	3-Methyl-2-butenoic acid, 3-phenylpropyl ester
74	48.546	63989	0.0818	6Z-2,5,5,10-Tetramethyl-undeca-2,6,9-trien-8-
75	49.307	77497	0.0990	Bornyl angelate
76	49.713	59081	0.0755	(E)-2-Isopropyl-5-methylphenyl 2-methylbut-2-
77	51.288	66095	0.0845	Ethyl nonadecanoate
Total		78255913	100.0000	