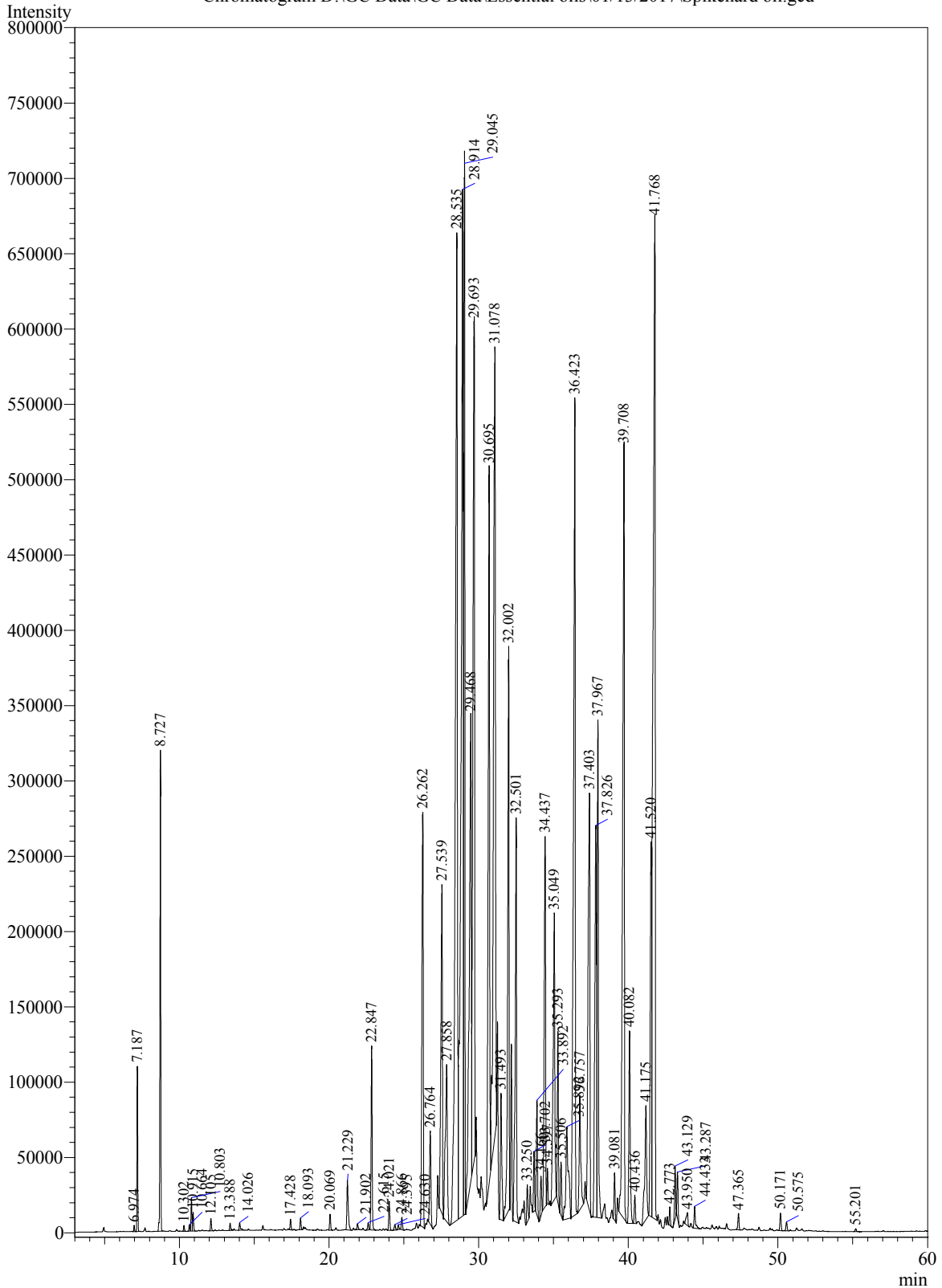


Sample Information

Analysis Date & Time : 01/13/2017
User Name : \$Admn.\$
Sample Name : Spikenard oil
Sample Type : \$Organic\$
Data Name : D:\GC Data\GC Data\Essential oils\01/13/2017\Spikenard oil.gcd

Chromatogram D:\GC Data\GC Data\Essential oils\01/13/2017\Spikenard oil.gcd



Peak Table - Channel 1

Peak#	Ret.Time	Area	Area%	Name
1	6.974	13883	0.0183	Alpha-thujene
2	7.187	370389	0.4887	Alpha-Pinene
3	8.727	1191840	1.5725	Beta-Pinene
4	10.302	15500	0.0205	4-Methyl-alpha phenyl ethyl alcohol
5	10.664	17092	0.0226	Para-cymene
6	10.803	87311	0.1152	Limonene
7	10.915	53952	0.0712	Eucalyptol
8	12.105	35876	0.0473	Gamma-terpinene
9	13.388	24453	0.0323	Terpinolene
10	14.026	29251	0.0386	Linalool
11	17.428	31802	0.0420	3-Bromopentane
12	18.093	36180	0.0477	Alpha-terpineol
13	20.069	50471	0.0666	Thymol methyl ether
14	21.229	208194	0.2747	Valeric acid, 2-tridecyl ester
15	21.902	20740	0.0274	1-Vinylpentyl acetate
16	22.615	25028	0.0330	2-Octanone
17	22.847	594020	0.7837	Myrtenate methyl
18	24.021	95234	0.1257	Myrtenyl acetate
19	24.395	19911	0.0263	Benzene, 1-trifluoromethyl-4-(2-methoxybenzyloxy)
20	24.630	16576	0.0219	(E)-1,3-HEXADIENE
21	24.866	42721	0.0564	Alpha-sinensal
22	26.262	1784828	2.3549	Beta-Patchoulene
23	26.764	364200	0.4805	Beta-Elemene
24	27.539	1538123	2.0294	Maaliene gamma
25	27.858	964919	1.2731	Isoledene
26	28.535	6245778	8.2406	Muurola-4(14),5-diene cis
27	28.914	6534615	8.6217	Pyrazine, 2,5-dimethyl-3-(3-methylbutyl)-
28	29.045	3909880	5.1586	Guaia-6,9-diene
29	29.468	2912358	3.8425	10s,11s-Himachala-3(12),4-diene
30	29.693	4421436	5.8336	Alpha-Guaiene
31	30.695	3131580	4.1318	Cadina-1(6),4-diene
32	31.078	4912710	6.4818	Valencene
33	31.493	553847	0.7307	Bulnesene alpha
34	32.002	2303864	3.0397	Murolene gamma
35	32.501	1658440	2.1881	Isolongifolene, 4,5-dehydro-
36	33.250	131450	0.1734	2,5,5-Trimethyl-3-hexyn-2-ol
37	33.702	191658	0.2529	Beta-longipinene
38	33.892	403576	0.5325	Ledol
39	34.166	148789	0.1963	Maaliol
40	34.437	1607228	2.1206	Cadin-4-en-10-ol
41	34.597	100800	0.1330	Globulol
42	35.049	1437523	1.8966	Carotol
43	35.293	549880	0.7255	Rosifoliol
44	35.506	192001	0.2533	Gleenol
45	35.892	730689	0.9641	Himachalol

Peak#	Ret.Time	Area	Area%	Name
46	36.423	4312263	5.6895	Bicyclogermacrene
47	36.757	560044	0.7389	Viridiflorol
48	37.403	2299123	3.0334	Patchouli alcohol
49	37.826	2104147	2.7762	Spathulenol
50	37.967	1917935	2.5305	Jatamansone
51	39.081	152792	0.2016	syn-Tricyclo[5.1.0.0(2,4)]oct-5-ene, 3,3,5,6,8,8-hexa
52	39.708	4065470	5.3639	Aristolone
53	40.082	817609	1.0787	Aristola-1(10),8-diene
54	40.436	98686	0.1302	Eremophilone
55	41.175	663145	0.8749	14-oxy-alpha-murolene
56	41.520	1800003	2.3749	Cyclocolorenone epi
57	41.768	6586136	8.6897	Shyobunol
58	42.773	57622	0.0760	Cinnamaldehyde (2Z)- hexyl
59	43.129	169368	0.2235	Valerinic acid
60	43.287	153410	0.2024	Intermedeol neo
61	43.950	69679	0.0919	Tetracyclo[6.1.0.0(2,4).0(5,7)]nonane, 3,3,6,6,9,9-he
62	44.433	91194	0.1203	Butanoic acid, 2-methyl-, 2-methoxy-4-(2-propenyl)g
63	47.365	56830	0.0750	Benzen, 2-acetate-1,3-dimethoxy-5-(1-propenyl)-
64	50.171	62496	0.0825	Cycloisolongifolene, 8,9-dehydro-
65	50.575	33269	0.0439	1,1,2,2,3,3-Hexamethylindane
66	55.201	11043	0.0146	cis-9,10-Epoxyoctadecan-1-ol
Total		75792860	100.0000	