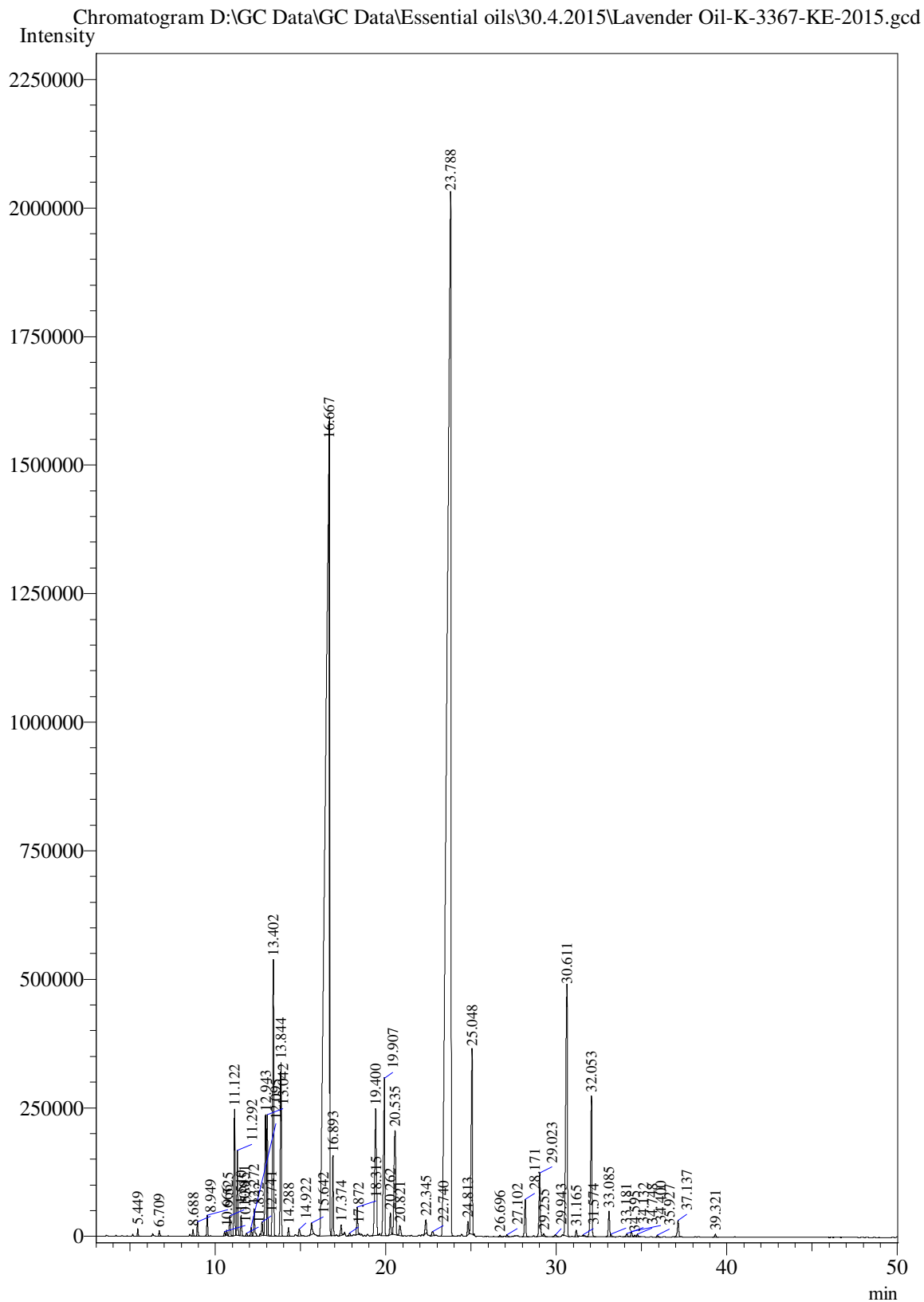


Sample Information

Analysis Date & Time : 4/30/2015 6:01:33 PM
User Name : \$Admn.\$
Sample Name : Lavender Oil,K-3367-KE-2015
Sample Type : \$Organic\$
Data Name : D:\GC Data\GC Data\Essential oils\30.4.2015\Lavender Oil-K-3367-KE-2015.gcd



Peak Table - Channel 1

Peak#	Ret.Time	Area	Area%	Name
1	5.449	40412	0.0485	Diola
2	6.709	37707	0.0452	Hexanol n
3	8.688	44037	0.0528	Alpha-Thujene
4	8.949	103269	0.1239	Alpha-Pinene
5	9.525	157006	0.1883	Camphene
6	10.539	29005	0.0348	Sabinene
7	10.666	31254	0.0375	Beta-Pinene
8	10.851	194010	0.2327	1-Octen-3-ol
9	11.122	994659	1.1930	3-Octanone
10	11.292	605521	0.7263	Myrcene
11	11.510	166533	0.1997	3-Octanol
12	11.832	26238	0.0315	Alpha-phellandrene
13	12.095	71057	0.0852	Carene delta-3
14	12.272	242491	0.2909	Hexyl acetate
15	12.741	130217	0.1562	Para-Cymene
16	12.943	1149828	1.3791	Limonene
17	13.042	865184	1.0377	Eucalyptol
18	13.402	2494266	2.9917	Cis-beta-ocimene
19	13.844	1413226	1.6951	Trans-beta-Ocimene
20	14.288	67027	0.0804	Gamma-terpinene
21	14.922	74807	0.0897	Trans-linalool oxide
22	15.642	123494	0.1481	Alpha-terpinolene
23	16.667	26703728	32.0295	Linalool
24	16.893	602522	0.7227	Octene 3-acetoxy
25	17.374	98510	0.1182	Acetate 3-octyl
26	17.872	27073	0.0325	3-Terpinen-1-ol
27	18.315	238897	0.2865	Camphor
28	19.400	1681724	2.0171	Isoborneol
29	19.907	1662757	1.9944	Terpinen-4-ol
30	20.262	189081	0.2268	Cryptone
31	20.535	1432484	1.7182	Alpha-terpineol
32	20.821	124199	0.1490	Gamma-Terpineol
33	22.345	140618	0.1687	Isobornyl formate
34	22.740	54660	0.0656	Geraniol
35	23.788	32748305	39.2796	Linalyl acetate
36	24.813	115682	0.1388	Bornyl acetate
37	25.048	1947501	2.3359	Lavandulyl acetate
38	26.696	13347	0.0160	Hexyl tigilate
39	27.102	16909	0.0203	1,5-Octadien-3,7-diol, 3,7-dimethyl
40	28.171	359625	0.4313	Neryl acetate
41	29.023	636752	0.7637	Geranyl isobutyrate
42	29.255	25576	0.0307	Alpha-Zingiberene
43	29.943	28449	0.0341	Bergamotene
44	30.611	3242492	3.8892	Trans-Caryophyllene
45	31.165	62574	0.0751	Alpha-Bergamotene

Peak#	Ret.Time	Area	Area%	Name
46	31.574	18276	0.0219	Alpha-humulene
47	32.053	1525622	1.8299	Farnesene (E)-beta
48	33.085	254415	0.3052	Germacrene D
49	33.181	22491	0.0270	Bergamotene beta- trans
50	34.132	31456	0.0377	Beta-Bisabolene
51	34.400	50915	0.0611	Muurolene gamma
52	34.595	11353	0.0136	Teresantalol
53	34.748	20377	0.0244	Sesquisabinene
54	35.927	17683	0.0212	Cyclobutene, 4,4-dimethyl-1-(2,7-octadienyl)
55	37.137	177418	0.2128	Caryophyllene oxide
56	39.321	27619	0.0331	Tau-cadinol
Total		83372338	100.0000	